

*Triple A  
Angus*

**AAA** *BULL SALE*

*Acquire the Angus Advantage*

**TWENTY SEVENTH**  
ANNUAL

*Bull Sale*

**Saturday, April 13, 2024 • 1:00 PM**

Johnstone Auction Mart • Moose Jaw, Saskatchewan

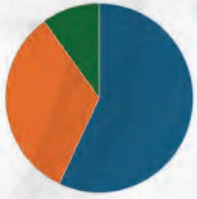
**OFFERING YEARLING BLACK ANGUS BULLS**

---

# WELCOME *from* AAA ANGUS

On behalf of all the consignors we would like to thank all our past bidders and buyers for their support in making this sale a success for the past 26 years. Also thanks to Hagerty Livestock, T Bar C, and Johnstone crews for making this sale possible. What a great time to be in the cattle business, we are finally getting paid for all our hard work and next fall could be even better! The market is paying top dollars for quality cattle and the consignors offer a wide variety of top genetics in the black angus breed located throughout Southern and East Central Sask.

We have an outstanding group of bulls on offer this year. Whether you're looking for a bull for heifers or cows we have a great selection from some exciting NEW GENETICS and PROVEN ONES. There's a bull for every budget. If you need more info please contact any of the consignors.



## 2023 SALE RESULTS

57% Sold in the 4,000 – \$6,000 range

33% Sold in the 6,000 – \$8,000 range

10% Sold in the \$8000+ range

COME VIEW THE BULLS ON FRIDAY, APRIL 12TH AND JOIN US FROM 4 TO 7 PM FOR SOME HOSPITALITY AND GREAT ANGUS BURGERS. WE LOOK FORWARD TO SEEING YOU AT JOHNSTONE AUCTION MART IN MOOSE JAW.

## Triple AAA Sales Group

# FROM THE DESK AT T BAR C

Welcome to the 27th Annual Angus Bull Sale on Saturday, April 13th, 2024, at Johnstone Auction Mart, Moose Jaw, Saskatchewan. What an outstanding achievement for this group of dedicated and progressive Angus breeders. From the pioneers who started this foundation event to those who present this powerful offering of bulls... congratulations and thanks for your value-added efforts.

In addition to the longevity, what makes this event unique is the diversity of genetics. Every program prides itself on strong predictable cow families and since the bulls are jointly presented and conditioned together, the strength of their mothers is a key factor.

2024 has an outstanding set of yearling bulls... ideal for purebred breeder scrutiny; bred and designed to add pounds to your calves at weaning and you'll keep all daughters in your replacement pastures.....as the years ahead will be exciting,

Feel free to preview the bulls any time prior to the sale at Hagerty's. The bulls will be at the Sale barn on Friday evening... plan to stop by for a viewing with a bit of hospitality. Do not hesitate to call the consignors to visit about their bulls,

Plan to be with us on April 13th in person, on the phone or online, and do not hesitate to give any of us at T Bar a call as we can assist you with your purchases in a professional and confidential manner.

## Chris Poley



### SALE MANAGEMENT

T Bar C Cattle Co. Ltd.  
Box 2330  
Warman, SK S0K 4S0  
Office: 306-933-4200  
Fax: 306-934-0744  
info@tbarc.com www.tbarc.com



CHRIS POLEY  
306-220-5006



SHANE MICHELSON  
403-363-9973



BEN WRIGHT  
519-374-3335



LEVI RIMKE  
204-851-4515

# ACQUIRE THE ANGUS ADVANTAGE

AT THE 27TH TRIPLE AAA BULL SALE

## OFFERING 47 YEARLING BULLS

Lunch at 12:00 Noon • Sale at 1:00 PM • Saturday, April 13, 2024

Johnstone Auction Mart, Moose Jaw, Saskatchewan

### Auctioneer

Chris Poley \_\_\_\_\_ 306-220-5006

### Ringmen

Shane Michelson \_\_\_\_\_ 403-363-9973

Ben Wright \_\_\_\_\_ 519-374-3335

Levi Rimke \_\_\_\_\_ 204-851-4515

### Livestock Insurance

Bonnie Thompson \_\_\_\_\_ 306-483-7311

Alameda Agencies

### 2023 BREED AVERAGES

	BW	WW	YW	Milk	SC	CE	MCE
BLK	2.0	54	95	23	0.86	3.5	6.8

### DEFINITIONS:

**BW** – Birth Weight – all weights are measured in pounds.

**AOD** – Age of Dam

**PROJ WT.** – Estimate of Sale Day Weight

### BID ONLINE WITH DLMS

Can't make it to the sale? **Watch & Bid Online.**

With DLMS you can Watch, Listen & Bid on your computer just like you were there with online bidding over the internet

#### Instructions for Viewing And Bidding At the Sale

Visit [www.dlms.ca](http://www.dlms.ca). Fill out the registration form located under registration and sign-up for your free user account to select a username and password.

**BIDDERS** - To be approved as a bidder, Log in and click BUYER APPROVAL tab, select the sale you are interested in bidding at and click sign up.

For more information or for help getting approved Call:

Mark Shologan - 780-699-5082 or DLMS Purebred Team 780.991-3025

Direct Livestock Marketing Systems  
We're Making the Connection

**DLMS**  
[www.dlms.ca](http://www.dlms.ca)

To find an agent or sale near you today  
visit [www.dlms.ca](http://www.dlms.ca)

Purebred Sales • Daily Presort Sales  
Direct Off-farm Sales every Thursdays at 10:00 am

### LUNCH SPONSORED BY FCC



view the catalogue ONLINE AT  
**WWW.BUYAGRO.COM**



## CONSIGNORS



Triple H Angus _____	Perry, Dawn & Cory Hart _____	306-723-4832 _____	Lots 1 - 6
4K Angus _____	Tim, Paulette, Ellen & Scott Keys _____	306-939-4499 _____	Lots 7 - 12
Cottonwood Angus _____	Brett Gaube _____	306-537-4710 _____	Lots 13 - 17
Willowview Angus _____	Ken & Sandy Harle _____	306-539-8185 _____	Lots 21 - 24
Nu-Horizon Angus _____	Kieran, Deb & Kodie Doetzel _____	306-331-0384 cell: 403-357-7648 _____	Lots 25 - 34
Bell Angus _____	Ken & Sheila Bell _____	306-591-7792 _____	Lots 35 - 41
Hi Low Angus _____	Dan, Erin & Cassidy Howell _____	306-731-2940 cell: 306-581-7606 _____	Lots 42 - 55

**LOTS  
1-6**

# TRIPLE H ANGUS

Ph: 306-723-4832

**Perry & Dawn Hart**

Box 531 Cupar, SK S0G 0Y0

**Cory Hart**

Box 334 Cupar, SK S0G 0Y0

triplehredangus@gmail.com



Welcome to the **27th Triple A Bull Sale**. We have a strong set of Black Bulls on offer in this year's Sale but we decided to keep the Red Bulls at home. We would like to Thank all Bidders and Buyers for your past support and look forward to seeing you again at the 2024 Sale.

For more information on the Bulls call:

Perry 306-723-4832, Cell 306-726-7671 • Dawn 306-718-7979 • Cory 306-726-7755



## 1 TRIPLE H **ELIMINATOR** 1L

MALE 2327939 HRA 1L FEB 3 2023

RITO 707 OF IDEAL 3407 7075  
**S A V ELIMINATOR 9105**  
S A V ABIGALE 5646

SOO LINE MOTIVE 9016  
**TRIPLE H MV QUEEN 5G**  
TRIPLE H QUEEN GUS 6E

R R RITO 707  
IDEAL 3407 OF 1418 076  
S A F 598 BANDO 5175  
S A V ABIGALE 6062  
HF KODIAK 5R  
TLA BEAUTY 5R  
NORTHERN VIEW SMW GUSTOV 3Z  
F V QUEEN FA 342Z

BW	WW	YW	MILK	CE	MCE
0.6	57	103	24	3	1
<b>BW:</b> 79 lbs	<b>Nov. 5:</b> 930 lbs	<b>Feb. 9:</b> 1316 lbs	<b>ADG:</b> 4.02 lbs	<b>WPDA:</b> 3.55 lbs	<b>PROJ WT:</b> 1526 lbs
				<b>AOD:</b> 4	

Here's a Bull with a very interesting Pedigree. He's kind of a blast from the Past being Sired By **S A V Eliminator 9105** out of a **Soo Line Motive 9016** Daughter. **HRA 1L** was born Feb 3 at 79 lbs, weighed 810 lbs at weaning and he has a Projected Sale Weight of 1530 lbs. He's stylish, smooth made, long spined with a wide top and big nuted with a clean sheath. His Dam 5G has an awesome typical Motive udder, we have 1 daughter in the Herd and sold 1 daughter to a Purebred Breeder this Fall. Don't miss out on this unique **Herd Sire** prospect, he will sire market topping steers and you will definitely want to keep his daughters. We would like to retain an "in herd semen interest" at the buyer's convenience and our expense.  
**Gestation: 274 days 205 WT: 709 lbs YWT: 1353 lbs WPDA: 3.71 lbs**  
**EPD's: CE 50% BWT 20% WWT 40% YWT 35% Milk 50% Top % of the Breed**

# 2

## TRIPLE H ENTICE 19L

MALE 2327941 HRA 19L FEB 14 2023

SYDGEN ENHANCE  
**MOGCK ENTICE**  
MOGCK ERICA 2255

TRIPLE H INTUITION 14B  
**TRIPLE H LADY PRIDE INT 82E**  
TRIPLE H LADY PRIDE 16B

SYDGEN EXCEED 3223  
SYDGEN RITA 2618  
MOGCK SURE SHOT 253  
MOGCK ERICA 2162  
S A V BRILLIANCE 8077  
F V HD QUEEN 302Z  
B P F SPECIAL FOCUS 504  
F V LADY PRIDE HD 351Z

BW	WW	YW	MILK	CE	MCE
-1	62	108	30	10	6
<b>BW:</b>	<b>Nov. 5:</b>	<b>Feb. 9:</b>	<b>ADG:</b>	<b>WPDA:</b>	<b>PROJ WT:</b>
76 lbs	960 lbs	1224 lbs	2.75 lbs	3.4 lbs	1434 lbs
				<b>ADD:</b>	
				6	

This Bull is sired by **Mogck Entice** and is out of an **Intuition 14B** Daughter. He was born Feb 14 at 76 lbs, weighed 760 lbs at weaning and he has a Projected Sale Weight of 1438 lbs. His Dam 82E has 1 daughter working for Gold Willow Ranch and 1 daughter in our Herd. This will be the second Bull that she has raised. With **+10 CE** and **-1 BWT** numbers this long bodied, smooth made Fella could work in the heifer pen or on cows. He will produce calves that weigh up in the Fall and you will want to keep his daughters. **Gestation: 281 days 205 WT: 700 lbs YWT: 1256 lbs WPDA: 3.44 lbs EPD's: CE 10% BWT 5% WWT 25% YWT 25% Milk 7% Top % of the Breed**



Lot 2 with Dam

# 2

# 3

## TRIPLE H GROWTH FUND 25L

MALE 2327942 HRA 25L FEB 17 2023

BASIN PAYWEIGHT 168Z  
**DEER VALLEY GROWTH FUND**  
DEER VALLEY RITA 36113

GTA BLACK UP 93A  
**TRIPLE H ANNIE K 77C**  
F V ANNIE K FA 107Z

BASIN PAYWEIGHT 006S  
21AR O LASS 7017  
PLATTEMERE WEIGH UP K360  
DEER VALLEY RITA 9457  
SITZ UPWARD 307R  
BLACK GTA 54X  
F V FINAL ANSWER 127W  
F V 4336 ANNIE K 658T

BW	WW	YW	MILK	CE	MCE
3.1	83	151	26	4	9

BW:	Nov. 5:	Feb. 9:	ADG:	WPDA:	PROJ WT:	AOD:
92 lbs	992 lbs	1326 lbs	3.48 lbs	3.71 lbs	1536 lbs	8

**WOW!** Lots of Performance in this **Deer Valley Growth Fund** son out of a **Upwards 307R** grand daughter. This will be the 5th Bull that his Dam Annie K 77C has produced , she consistently raises top end calves. **HRA 25L** was born Feb 17 at 92 lbs, weighed 890 lbs. at weaning and has a Projected Sale Weight of 1540 lbs. They all get big but what counts is how fast they do it and this brute is a power house chunk of a bull with amazing growth, our highest indexing bull calf. He will definitely sire market topping steers in the Fall and his daughters will be the Herd Bull producing kind. **WWT 83 YWT 151**

**Gestation: 281 days 205 WT 801 lbs (3.91 lbs/day) YWT 1353 lbs WPDA: 3.71 lbs EPD's: Top 1% of the Breed for WWT and YWT.**



Lot 3 with Dam

# 3



4

TRIPLE H INTUITION 41L

MALE 2327943 HRA 41L FEB 26 2023  
 S A V BRILLIANCE 8077  
 F V HD QUEEN 302Z  
 TRIPLE H INTUITION 14B  
**TRIPLE H INTUITION 7J**  
 TRIPLE H FT DUCHES 49G  
 LODGE DUCHESS 14D  
 MYTTY IN FOCUS  
 B P F SPECIAL FOCUS 504  
 B P F BLACK CASH 341  
**TRIPLE H QUEEN ERICA 8B**  
 S A V FINAL ANSWER 0035  
 F V QUEEN ERICA FA 294Z  
 F V QUEEN ERICA 765W

BW	WW	YW	MILK	CE	MCE	
-0.1	59	97	25	10	11	
<b>BW:</b> 80 lbs	<b>Nov. 5:</b> 848 lbs	<b>Feb. 9:</b> 1176 lbs	<b>ADG:</b> 3.42 lbs	<b>WPDA:</b> 3.38 lbs	<b>PROJ WT:</b> 1386 lbs	<b>ADD:</b> 9

Here's the 1st Bull to sell out of our Herd Sire **Triple H Intuition 7J**. If you check out his Pedigree you will find **Bismarck, Brilliance, Hoover Dam** and **Fortitude 2500**. HRA 7J is a bull that adds a lot of consistency to his Progeny, all 7 of his bull calves made it to the bull pen this year with 3 on offer in this Sale. All 8 daughters are being kept for breeding, 7 in our Herd and 1 that we sold to Tomblin's during the Angus Tour in August. HRA 7J's Bull calves average BWT is 84 lbs, his is 85 lbs. **41L's** Dam 8B is a **Final Answer** Grand daughter and has raised 3 bulls that sold in the **Triple A Sale** including the high seller in 2020 to Scissor Creek and Calico. **HRA 41L** was born Feb 26 at 80 lbs, weighed 800 lbs at weaning and his Projected Sale Weight is 1390 lbs. With **+10 CE** and **-0.1 BWT** numbers this wide topped, smooth made Bull will work well on heifers. His steers will also weigh up in Fall and females will be keepers.

**205 WT: 747 lbs YWT: 1220 lbs WPDA: 3.34 lbs**  
**EPD's: CE 10% BWT 10% WWT 35% YWT 45% Top % of the Breed**



5

TRIPLE H INTUITION 65L

MALE 2327944 HRA 65L MAR 9 2023  
 S A V BRILLIANCE 8077  
 F V HD QUEEN 302Z  
 TRIPLE H INTUITION 14B  
**TRIPLE H INTUITION 7J**  
 TRIPLE H FT DUCHES 49G  
 LODGE DUCHESS 14D  
 SITZ UPWARD 307R  
 BLACK GTA 54X  
 YOUNG DALE EDGAR 43X  
 IVANHOE LINDA 31X  
 GTA BLACK UP 93A  
**TRIPLE H LINDA 25C**  
 IVANHOE LINDA 20A

BW	WW	YW	MILK	CE	MCE	
1	58	101	27	7	9	
<b>BW:</b> 79 lbs	<b>Nov. 5:</b> 850 lbs	<b>Feb. 9:</b> 1094 lbs	<b>ADG:</b> 2.54 lbs	<b>WPDA:</b> 3.25 lbs	<b>PROJ WT:</b> 1304 lbs	<b>ADD:</b> 8

Another **Intuition 7J** son out of another **Upwards 307R** Grand daughter. He was born March 9th at 79 lbs. and weighed 760 at weaning with a Projected Sale Weight of 1308 lbs. His Dam 25C is a tank of a cow, she has raised a Herd Bull for us and this will be her 2nd bull to sell in this Sale. Her 1st Bull was the high seller in **2022 Triple A Sale** to Hexagon Ag. **HRA 65L** is stylish, long bodied, smooth made and could be used on heifer or cows. He'll sire top quality steers and you will definitely want to keep his heifers. Don't forget he's 1-2 months younger than most of the Bulls in the Sale

**205 WT: 743 lbs YWT: 1161 WPDA: 3.18 lbs**  
**EPD's: CE 25% BWT 25% WWT 35% YWT 35% Milk 20% Top % of the Breed**



BOYS ON THE MOVE AUGUST 2023

TRIPLE H **INTUITION** 73L

MALE 2327945 HRA 73L MAR 12 2023

TRIPLE H INTUITION 14B  
**TRIPLE H INTUITION 7J**  
 TRIPLE H FT DUCHES 49G

PEAK DOT NO DOUBT 307F  
**TRIPLE H ND QUEEN 83H**  
 TRIPLE H QUEEN GUS 6E

S A V BRILLIANCE 8077  
 F V HD QUEEN 302Z  
 TRIPLE H FORTITUDE UP 11E  
 LODGE DUCHESS 14D  
 HOOVER NO DOUBT  
 PEAK DOT BARBARA 7C  
 NORTHERN VIEW SMW GUSTOV 3Z  
 F V QUEEN FA 342Z

BW	WW	YW	MILK	CE	MCE	
2.9	67	116	23	3	9	
<b>BW:</b> 83 lbs	<b>Nov. 5:</b> 842 lbs	<b>Feb. 9:</b> 1122 lbs	<b>ADG:</b> 2.92 lbs	<b>WPDA:</b> 3.36 lbs	<b>PROJ WT:</b> 1332 lbs	<b>AOD:</b> 3

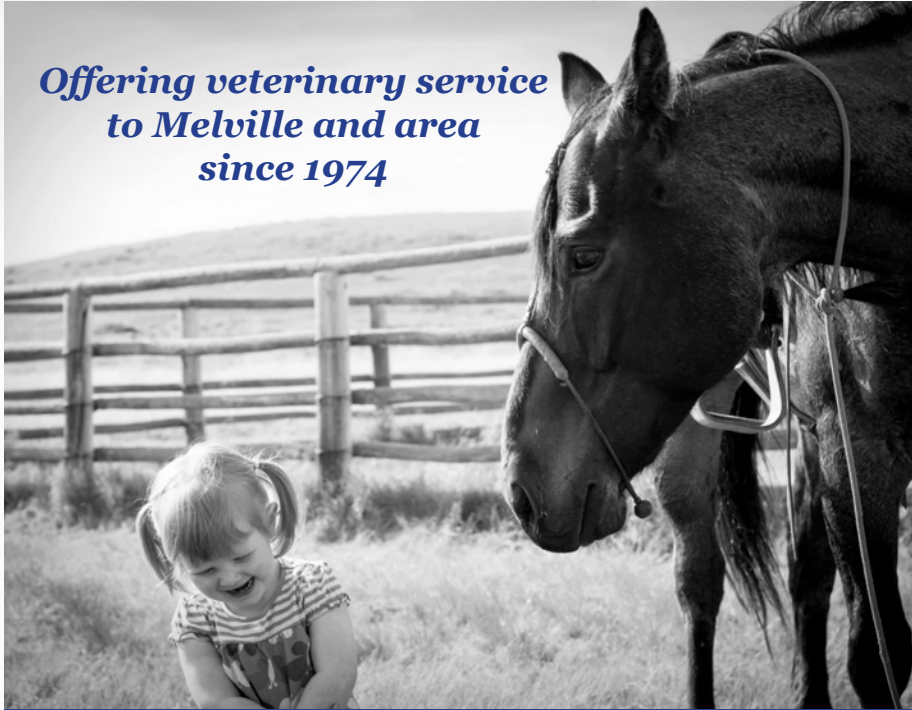
Here's our 3rd **Intuition 7J** son out of a **Hoover No Doubt** Grand daughter. He was born March 12th at 83 lbs, weighed 720 at weaning with a Projected Sale Weight of 1336 lbs. His Dam 83H has done a tremendous job on this Fella, he was our 2nd highest indexing bull calf. He's deep ribbed, smooth made and could work on larger framed heifers or cows. You will definitely want to retain his daughters and his steers will pound down the scales. Don't forget he's also one of the younger Bulls in the Sale.

**205 WT: 751 lbs YWT: 1259 lbs WPDA: 3.45 lbs**  
**EPD's: Top 10% of the Breed WWT and 15% YWT**



Average 205 WT on all 3 Intuition 7J Sons: 747 lbs, his 205 WT 733 lbs.  
 Average 205 WT on all 6 Bulls in the Sale: 741 lbs for WPDA of 3.61 lbs  
 Average 365 YWT on all 6 Bulls in the Sale: 1267 lbs for WPDA of 3.47 lbs

*Offering veterinary service  
 to Melville and area  
 since 1974*



**MELVILLE VETERINARY CLINIC**  
 202 Heritage Drive Melville, SK S0A 2P0  
 T: 306-728-4456 F: 306-728-4460  
 www.melvillevetclinic.com

Our compassionate and knowledgeable veterinary health team is dedicated to your small and large animal health needs.

Dr. Zachary Johnson DVM, Practice Owner - Dr. Charlotte Tyson BSc, DVM - Dr. Barbara Evans BSc, DVM, CVA  
 Dr. Jessica Murray DVM - Dr. Brandi Bakken BSc, DVM - Kylie Johnson, Practice Owner  
 Breanna Issel RVT - Kimberly Berger RVT - Kiana Campbell RVT  
 Madison Harrold RVT - Shanae Lingelbach RVT - Katelyn Dimler RVT  
 Nadine Bjornerud - Katha Pettinger - Monica Sawley - Krystal Baxter

**LOTS  
7-12**

# 4K ANGUS

Ph: 306-939-4499  
 Tim's cell: 306-731-7995  
 Paulette's cell: 306-731-7899

**Tim, Paulette, Ellen & Scott Keys**  
 Box 277 Earl Grey, SK S0G 1J0  
 4kangus@gmail.com



Welcome to the Triple A Angus Bull Sale! We have consigned a group of well-rounded heifer bulls from a variety of sire groups and off some top end females. We have bulls from both our AI program and off our new herd bull Everblack Money 219H. Money was a high selling calving ease bull we bought from Everblack in 2022 for \$16,500. His progeny have impressed us with their length of body, cleanliness, muscle dimension, and easy-fleshing style. Both his male and female progeny have been eye catching and are high performers. Please feel free to contact us with any questions and thank you for your consideration!



**7**

## **7** KEYS **KNOW HOW** 3L

**MALE** 2329634 **KEYS 3L** JAN 27 2023

HOVER NO DOUBT  
**HOVER KNOW HOW**  
 BLKCP EMPRESS ELLSTON L265

4M ELEMENT 405  
**KEYS BLACKCAP 6G**  
 KEYS BLACKCAP 16E

MOGCK BULLSEYE  
 MISS BLACKCAP ELLSTON J2  
 SYDGEN STORM 8504  
 BLKCP EMPRESS ELLSTON J120  
 POSS ELEMENT 215  
 4M BLACKBIRD 2004  
 HILOW TIGER 107B  
 BELL BLACKCAP 26Y

**Heifer bull. Parent Verified.** A Hoover Know How son that is an outcross to most programs, and exhibits length of body, added mass and lots of style. His 4M Element dam is a no miss AI recipient with a good udder, excellent foot and leg structure, and has been raising top end calves every year.

BW	WW	YW	MILK	CE	MCE	
2	67	132	21	4	7	
<b>BW:</b> 81 lbs	<b>Nov. 5:</b> 1032 lbs	<b>Feb. 9:</b> 1324 lbs	<b>ADG:</b> 3.04 lbs	<b>WPDA:</b> 3.5 lbs	<b>PROJ WT:</b> 1534 lbs	<b>AOD:</b> 4



8

KEYS **PLAYBOOK** 4L

MALE 2329858 KEYS 4L JAN 28 2023

BASIN PAYWEIGHT 1682  
**TEX PLAYBOOK 5437**  
RITA 1C43 OF 9M26 COMPLETE

MAR INNOVATION 251  
**MVF JEAN 19D**  
MVF JEAN 93X

BASIN PAYWEIGHT 0065  
21AR O LASS 7017  
SUMMITCREST COMPLETE 1P55  
RITA 9M26 OF RITA 5F56 PRED  
CONNEALY IMPRESSION  
MAR FINAL KAHUNA 856  
NORSEMAN FRONTIER 2'07  
MVF ANTAEUS JEAN 162H

BW	WW	YW	MILK	CE	MCE	
1	52	90	29	6	13	
<b>BW:</b> 79 lbs	<b>Nov. 5:</b> 930 lbs	<b>Feb. 9:</b> 1234 lbs	<b>ADG:</b> 3.17 lbs	<b>WPDA:</b> 3.27 lbs	<b>PROJ WT:</b> 1444 lbs	<b>AOD:</b> 7

**Heifer bull. Parent Verified.** This TEX Playbook son is an eye catching, smooth made, and deep bodied bull. He is off a beautifully structured Innovation dam with tons of capacity, good feet and legs, and great udder. Tons of maternal strength in this Playbook/Innovation cross!



9

KEYS **CAPITALIST** 9L

MALE 2329831 KEYS 9L JAN 31 2023

S A V FINAL ANSWER 0035  
**CONNEALY CAPITALIST 028**  
PRIDES PITA OF CONANGA 8821

4M ELEMENT 405  
**KEYS BLACKCAP 426F**  
KEYS BLACKCAP 26D

SITZ TRAVELER 8180  
S A V EMULOUS 8145  
C R A BEXTOR 872 5205 608  
PRIDES TRAV OF CONANGA 6499  
POSS ELEMENT 215  
4M BLACKBIRD 2004  
BELL PIONEER 25A  
BELL BLACKCAP 26Y

BW	WW	YW	MILK	CE	MCE	
2	55	97	18	3	4	
<b>BW:</b> 86 lbs	<b>Nov. 5:</b> 962 lbs	<b>Feb. 9:</b> 1322 lbs	<b>ADG:</b> 3.75 lbs	<b>WPDA:</b> 3.53 lbs	<b>PROJ WT:</b> 1532 lbs	<b>AOD:</b> 5

**Heifer bull. Parent Verified.** High performing Connealy Capitalist son who boasts calving ease bloodlines on both sides of his pedigree. His highly maternal 4M Element dam is the easy doing kind with good structure. 9L is thick, deep and has performed extremely well since weaning.



INNOVATIVE  
**PRODUCTS**  
ENHANCING YOUR NUTRITION  
**PROGRAM**  
MAKING YOU MORE  
**PROFITABLE**

Contact your beef territory manager to learn more:  
Derek Reimer 204-371-9093



**trouw nutrition**  
a Nutreco company

**BAR OVER HC LIVESTOCK**

**KELLY & JULIE-ANNE HOWE**  
306-313-2129 306-313-6863

**MOOSE JAW, SK**

- Ration Development • Feed Sales
- Forage Seed

[www.baroverhc.ca](http://www.baroverhc.ca)





10

10

KEYS **CHC** 16L

MALE 2316751

ESS 16L FEB 10 2023

BAR-H MONEY MADE 1D  
**EVERBLACK MONEY 219H**  
 EVERBLACK TIBBIE 160Z

KR CASH CI 4602  
 BAR-H 1145 TIBBIE 105B  
 KG WISDOM 9131  
 EVERBLACK TIBBIE 121M  
 SILVEIRAS STYLE 9303  
 K N C CABIN CREEK SANDY 804  
 MICH MOB BOSS 1425  
 DOUBLE D KARAMA 111S

SILVEIRAS S SIS GQ 2353  
**KEYS KARAMA 782F**  
 HLC KARAMA 782D

BW	WW	YW	MILK	CE	MCE	
1.6	40	69	20	5	8	
<b>BW:</b> 80 lbs	<b>Nov. 5:</b> 826 lbs	<b>Feb. 9:</b> 1120 lbs	<b>ADG:</b> 3.06 lbs	<b>WPDA:</b> 3.08 lbs	<b>PROJ WT:</b> 1330 lbs	<b>AOD:</b> 5

**Heifer bull. Parent Verified.** A solid son of Everblack Money. 16L exhibits lots of muscle dimension, style and correct structure. His GQ dam is a good milker and has thrown calves with lots of style and depth of body.



11

11

KEYS **CHC** 36L

MALE 2329775

SK 36L MAR 4 2023

BAR-H MONEY MADE 1D  
**EVERBLACK MONEY 219H**  
 EVERBLACK TIBBIE 160Z

KR CASH CI 4602  
 BAR-H 1145 TIBBIE 105B  
 KG WISDOM 9131  
 EVERBLACK TIBBIE 121M  
 S A V FINAL ANSWER 0035  
 PRIDES PITA OF CONANGA 8821  
 MAR INNOVATION 251  
 BELL BLACK LUCY 20C

CONNEALY CAPITALIST 028  
**KEYS CERA 20H**  
 KEYS BLACK LUCY 320E

BW	WW	YW	MILK	CE	MCE	
0.4	46	81	22	7	5	
<b>BW:</b> 76 lbs	<b>Nov. 5:</b> 838 lbs	<b>Feb. 9:</b> 1078 lbs	<b>ADG:</b> 2.5 lbs	<b>WPDA:</b> 3.15 lbs	<b>PROJ WT:</b> 1288 lbs	<b>AOD:</b> 3

**Heifer bull. Parent Verified.** This son of Everblack Money is a very well-rounded individual with depth, width and a smooth front end. 36L is a moderate framed March born bull that has shown excellent performance. His Connealy Capitalist dam comes from a highly maternal cow family with great udders and longevity.



## Riverview Sausage

2.5km NW of Craven, on Highway 20

- Bison
- Wild Game Processing
- Butchering
- Smokies
- Garlic Sausage
- Smoked Garlic
- Jalapeno & Cheddar Smokies
- Maple Sausage
- Pepperettes
- Homemade Burgers

Curtis Hicks  
 1 306 305 9144  
 Riverviewsausage@gmail.com  
 Riverviewsausage.com



12

12

KEYS **CHC** 40L

MALE 2329734

KEYS 40L MAR 10 2023

BAR-H MONEY MADE 1D  
**EVERBLACK MONEY 219H**  
 EVERBLACK TIBBIE 160Z

S A V RAINFALL 6846  
**KEYS JEAN 2H**  
 MVF JEAN 19D

KR CASH CI 4602  
 BAR-H 1145 TIBBIE 105B  
 KG WISDOM 9131  
 EVERBLACK TIBBIE 121M  
 COLEMAN CHARLO 0256  
 S A V BLACKCAP MAY 4136  
 MAR INNOVATION 251  
 MVF JEAN 93X

**Heifer bull. Parent Verified.** A standout Everblack Money son that is stout and well balanced. 40L is a moderate framed March born bull that exhibits an outstanding amount of muscle dimension and good structure. We love his SAV Rainfall dam in terms of body, style and udder quality.

BW	WW	YW	MILK	CE	MCE	
0.1	42	76	22	7	10	
<b>BW:</b> 74 lbs	<b>Nov. 5:</b> 762 lbs	<b>Feb. 9:</b> 1058 lbs	<b>ADG:</b> 3.08 lbs	<b>WPDA:</b> 3.15 lbs	<b>PROJ WT:</b> 1268 lbs	<b>AOD:</b> 3



Everblack Money 219H



**Prairie  
 Co-operative Limited**

P.O. Box 1330, 751 - 7th Ave West  
 Melville SK S0A 2P0



**CORY HART**  
 Ag Equipment Operations  
 Cupar Home & Ag Centre

**Business** 306.723.1206  
**Cell** 306.726.7755  
**Fax** 306.723.1202

P.O. Box 10, Highway 22 & Lansdown Street  
 Cupar SK S0G 0Y0

[www.prairieco-op.crs](http://www.prairieco-op.crs)

[cupar.equip@prairiecoop.com](mailto:cupar.equip@prairiecoop.com)

**LOTS  
13-17**

# COTTONWOOD ANGUS

Ph: 306-537-4710

**Brett Gaube**  
Box 1587, Weyburn, SK S4H 0T1  
gaubeb@outlook.com



Cottonwood Angus was one of the founding consignors and would like to welcome everyone to the 27th anniversary of the AAA Bull Sale. I'm looking forward to seeing you and I'm always available to answer any questions.

Brett Gaube 306 537 4710



## 13 COTTONWOOD GROWTH FUND 4L

MALE 2335326 RTBG 4L FEB 28 2023

BASIN PAYWEIGHT 1682  
**DEER VALLEY GROWTH FUND**  
DEER VALLEY RITA 36113

WILLOWVIEW NET WORTH 12W  
**COTTONWOOD TIPTOP 4Z**  
WILLOWVIEW TIPTOP 21N

BASIN PAYWEIGHT 0065  
21AR O LASS 7017  
PLATTEMERE WEIGH UP K360  
DEER VALLEY RITA 9457  
S A V NET WORTH 4200  
COTTONWOOD TIPTOP 3L  
HXL STOCKMAN 2K  
COTTONWOOD TIPTOP 12K

BW	WW	YW	MILK	CE	MCE	
1.4	74	131	27	6	10	
<b>BW:</b> 72 lbs	<b>Nov. 5:</b> 820 lbs	<b>Feb. 9:</b> 1205 lbs	<b>ADG:</b> 4.01 lbs	<b>WPDA:</b> 3.48 lbs	<b>PROJ WT:</b> 1425 lbs	<b>AOD:</b> 11

It's a stack genetic package this bull is out of one of my best cows that always produces top performance and excellent confirmation into her calves combined with deer valley Growth Fund.

**SweetPro**<sup>®</sup>  
PREMIUM SUPPLEMENTS

**CHOOSE  
NUTRITION**

CATHY LIPSETT LUMSDEN, SK  
306.731.7737

**ENHANCE YOUR GENETICS  
IMPROVE YOUR BOTTOM LINE**



14

**14** COTTONWOOD **TRIUMPH** 304L

MALE 2334000 RTBG 304L FEB 2 2023

COLEMAN BRAVO 6313  
**COLEMAN TRIUMPH 9145**  
 LAWSONS CHLOE C815

JCC J.D. 9C  
**COTTONWOOD TIPTOP 04H**  
 COTTONWOOD TIPTOP 50C

COLEMAN CHARLO 0256  
 COLEMAN DONNA 714  
 S A V RENOWN 3439  
 LAWSONS CHLOE Z341  
 S A V INTERNATIONAL 2020  
 WERNER BLACK ANGEL 1299  
 BLAIRS NEW GENERATION 303Z  
 COTTONWOOD TIPTOP 4Z

**BW:** 72 lbs    **Nov. 5:** 732 lbs    **Feb. 9:** 1150 lbs    **ADG:** 4.35 lbs    **WPDA:** 3.09 lbs    **PROJ WT:** 1360 lbs    **AOD:** 3

Here is the real package it's a stack genetic package with the Coleman Triumph 9145 out of Colman Bravo 6313 and Lawsons Chloe C815. On the dam side she has Tip Top.

BW	WW	YW	MILK	CE	MCE
0.8	58	104	23	8	5

**15** COTTONWOOD **BLOODLINE** 377L

MALE 2334003 RTBG 377L JAN 29 2023

S A V RAINFALL 6846 DMF  
**S A V BLOODLINE 9578**  
 S A V EMBLYNETTE 2369

JCC J.D. 9C  
**COTTONWOOD TIPTOP 77E**  
 COTTONWOOD TIPTOP 40B

COLEMAN CHARLO 0256  
 S A V BLACKCAP MAY 4136  
 S A V 707 RITO 9969  
 S A V EMBLYNETTE 7566  
 S A V INTERNATIONAL 2020  
 WERNER BLACK ANGEL 1299  
 HF KODIAK 5R  
 COTTONWOOD TIPTOP 11U

BW	WW	YW	MILK	CE	MCE
3.3	60	112	23	0	8

**BW:** 80 lbs    **Nov. 5:** 764 lbs    **Feb. 9:** 1054 lbs    **ADG:** 3.02 lbs    **WPDA:** 2.8 lbs    **PROJ WT:** 1264 lbs    **AOD:** 6

Here's is the real package with its stacked genetic with sav bloodline out of sav rainfall. On the dam side she is a Tip Top cow family have outstanding feet and udders and longevity.



15

These are the Seventh set of bulls sired by JCC JD. He had had an outstanding pedigree great EPDs and outstanding feet and claws his calves continue to exhibit the same tremendous length of body, depth, easy fleshing moderate birth weights. JD is siring calves that are getting the job done.



**16**

**COTTONWOOD JD 364L**

MALE 2333997 RTBG 364L FEB 12 2023

S A V INTERNATIONAL 2020  
**JCC J.D. 9C**  
 WERNER BLACK ANGEL 1299

BLAIRS NEW GENERATION 303Z  
**COTTONWOOD TIPTOP 64D**  
 COTTONWOOD TIPTOP 32A

S A V HARVESTOR 0338  
 S A V EMBLYNETTE 5483  
 S A V NET WORTH 4200  
 CLEARWATER BLACK ANGEL 395  
 DUFF NEW GENERATION 6107  
 MVF TIBBIE 60M  
 WILLOWVIEW NET WORTH 12W  
 WILLOWVIEW TIPTOP 11N

BW	WW	YW	MILK	CE	MCE	
4.1	56	101	28	-1	2	
<b>BW:</b> 85 lbs	<b>Nov. 5:</b> 748 lbs	<b>Feb. 9:</b> 1008 lbs	<b>ADG:</b> 2.71 lbs	<b>WPDA:</b> 2.78 lbs	<b>PROJ WT:</b> 1218 lbs	<b>AOD:</b> 7

The tiptop cow family have outstanding feet and udders and longevity they do themselves every year.



**17**

**COTTONWOOD JD 393L**

MALE 2334023 RTBG 393L MAR 1 2023

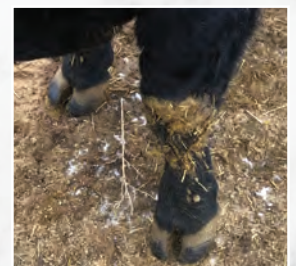
S A V INTERNATIONAL 2020  
**JCC J.D. 9C**  
 WERNER BLACK ANGEL 1299

MUSGRAVE AVIATOR  
**COTTONWOOD TIBBIE 93G**  
 CCCJ TIBBIE 4E

S A V HARVESTOR 0338  
 S A V EMBLYNETTE 5483  
 S A V NET WORTH 4200  
 CLEARWATER BLACK ANGEL 395  
 KOUPALS B&B IDENTITY  
 MCATL FOREVER LADY 1429-138  
 S A V SEEDSTOCK 4838  
 CCCJ TIBBIE 6Y

**BW:** 81 lbs    **Nov. 5:** 702 lbs    **Feb. 9:** 1032 lbs    **ADG:** 3.44 lbs    **WPDA:** 2.99 lbs    **PROJ WT:** 1242 lbs    **AOD:** 4

Here is an easy fleshing bull that put pounds on the calves he is only a March calf.



Sires Feet At 9 Years Old

BW	WW	YW	MILK	CE	MCE
2.7	48	92	28	3	7

**LOTS  
21-24**

# WILLOWVIEW ANGUS

Ph: 306-539-8185 306-359-6100

**Ken & Sandy Harle**  
Box 512 Regina, SK  
S4P 3A3  
harleks@sasktel.net



We would like to welcome you to the 27th edition of the Triple AAA Bull sale. Thank you to all bidders and buyers who have supported and trusted our sale over the years. We have on offer a pair of bulls from each sire that we continue to use for our own herd. Hope to see you on sale day.

See you sale day!  
Ken, Sandy and family

## SONS OF FREYS COWBOY LOGIC

This is our third year now of using Cowboy Logic. A new group of calves is on the ground now. He does not disappoint when it comes to calving ease. The calves are born easy, have terrific vigor and gain well. The replacement heifers we have kept have a great foot and udder. The Cowboy Logic heifers that calved this year did so without any problems.

## 21 WILLOWVIEW COWBOY LOGIC 1L

MALE 2327579 KSH 1L JAN 4 2023

HA COWBOY UP 5405C  
**FREYS COWBOY LOGIC**  
F A R PRINCESS 148Z

WILLOWVIEW BIG SPLIT 19A  
**WILLOWVIEW PEARL 11G**  
WILLOWVIEW PEARL 3A

HA OUTSIDE 3008  
HA BLACKCAP LADY 1602  
WK BOBCAT  
F A R PRINCESS 214X  
RING CREEK BIG SPLIT 11Y  
BLACK RIDGE GAMMER 23Y  
S A V IRON MOUNTAIN 8066  
WILLOWVIEW PEARL 52P

BW	WW	YW	MILK	CE	MCE	
-0.1	58	106	25	10	13	
<b>BW:</b> 76 lbs	<b>Nov. 5:</b> 866 lbs	<b>Feb. 9:</b> 1224 lbs	<b>ADG:</b> 3.73 lbs	<b>WPDA:</b> 3.05 lbs	<b>PROJ WT:</b> 1434 lbs	<b>AOD:</b> 4



**Viper Technology Group**  
Computers - Networks - Camera Systems

**Steven & Petrunia Olson**  
Office: 306.876.4961  
Mobile: 306.621.6723  
E-Mail: info@vipertechgroup.com  
[www.vipertechgroup.com](http://www.vipertechgroup.com) Visit us on Facebook

**WESTERN LITHO PRINTERS**

**DALE SCHAEFFER**  
President

306.537.5664  
dale@westernlitho.ca  
www.westernlitho.ca  
300 Dewdney Avenue  
Regina, SK S4N 0E  
306.525.8796



**22** WILLOWVIEW **COWBOY LOGIC** 10L

MALE 2327587 KSH 10L JAN 13 2023

HA COWBOY UP 5405C  
**FREYS COWBOY LOGIC**  
 F A R PRINCESS 148Z

MUSGRAVE 316 STUNNER  
**HLC MS ALICE 521G**  
 HLC MS ALICE 165E

HA OUTSIDE 3008  
 HA BLACKCAP LADY 1602  
 WK BOBCAT  
 F A R PRINCESS 214X  
 LD CAPITALIST 316  
 MCATL BLACKBIRD 831-1378  
 MERIT HEAVY METAL 5093  
 JL MS ALICE 3256

BW	WW	YW	MILK	CE	MCE	
0.9	66	116	28	8	11	
<b>BW:</b> 88 lbs	<b>Nov. 5:</b> 904 lbs	<b>Feb. 9:</b> 1250 lbs	<b>ADG:</b> 3.6 lbs	<b>WPDA:</b> 3.19 lbs	<b>PROJ WT:</b> 1460 lbs	<b>AOD:</b> 4



**EARL GREY**  
 VETERINARY SERVICES

**Dr. Justin Kristjansson**  
**Dr. Samantha Tetlock**

• Bovine • Equine • Small Ruminant • Pets

109 Assiniboia Avenue  
 Earl Grey, SK S0G 1J0  
 T: (306) 939-2264  
 myegvets@sasktel.net

Find us on Facebook & Instagram!



**Leroy Steinhubl**  
 Select Sires & Semex  
 Beef Representative  
 Nitrogen, Supplies & A.I. Breeding Services  
 Cell: 306-536-1784  
 Email: leroy\_steinhubl@outlook.com  
 Box 157 Balgonie, SK S0G 0E0



## SONS OF MERIT ARMSTRONG 9035G

Merit Armstrong 9035G continues to give us a consistent group of calves. The replacements we have kept are proving to be natural mothers. A couple other important traits that they carry are a good foot and udder. A little style doesn't hurt either. Recommended for cows.

### 23 WILLOWVIEW **ARMSTRONG** 19L

MALE 2333401 KSH 19L FEB 4 2023

KR APOLLO 6458  
**MERIT ARMSTRONG 9035G**  
 MERIT LADY ANN 7076E

LODGE FORTITUDE 13C  
**WILLOWVIEW GRAND JUNE 27F**  
 WILLOWVIEW GRAND JUNE 25C

KRAMERS APOLLO 317  
 KR MISS ANGUS 4309  
 HF UNIT 14C  
 MERIT LADY ANN 7158  
 PA FORTITUDE 2500  
 LODGE QUALITY LASS 31Y  
 PEAK DOT ELIMINATOR 819Y  
 WILLOWVIEW GRAND JUNE 33R

BW	WW	YW	MILK	CE	MCE	
2.5	57	105	26	1	4	
<b>BW:</b> 94 lbs	<b>Nov. 5:</b> 830 lbs	<b>Feb. 9:</b> 1254 lbs	<b>ADG:</b> 4.42 lbs	<b>WPDA:</b> 3.39 lbs	<b>PROJ WT:</b> 1464 lbs	<b>AOD:</b> 5



23



24

### 24 WILLOWVIEW **ARMSTRONG** 20L

MALE 2333402 KSH 20L FEB 6 2023

KR APOLLO 6458  
**MERIT ARMSTRONG 9035G**  
 MERIT LADY ANN 7076E

WILLOWVIEW BIG SPLIT 19A  
**WILLOWVIEW TIPTOP 15F**  
 WILLOWVIEW TIPTOP 6B

KRAMERS APOLLO 317  
 KR MISS ANGUS 4309  
 HF UNIT 14C  
 MERIT LADY ANN 7158  
 RING CREEK BIG SPLIT 11Y  
 BLACK RIDGE GAMMER 23Y  
 EXAR SIGNIFICANT 1769B  
 WILLOWVIEW TIPTOP 11W

BW	WW	YW	MILK	CE	MCE	
2.5	59	107	26	4	6	
<b>BW:</b> 95 lbs	<b>Nov. 5:</b> 890 lbs	<b>Feb. 9:</b> 1266 lbs	<b>ADG:</b> 3.92 lbs	<b>WPDA:</b> 3.4 lbs	<b>PROJ WT:</b> 1476 lbs	<b>AOD:</b> 5

On a side note, the four of these bulls were dropped of at Hagerty's in the fall with only a 20 lb. difference between heaviest to lightest. On weigh day in February there was a 38 lb. difference from heaviest to lightest.

**LOTS  
25-34**

# NU-HORIZON ANGUS

Ph: 306-336-2245  
Cell: 403-357-7648  
Kodie's Cell: 306-331-0384

**Kieran, Deb & Kodie Doetzel**  
BBox 227 Lipton, SK S0G 3B0  
kdknuhorizon@gmail.com



Firstly, we would like to thank our bidders and buyers from past years sales having trust in our program. We strive for sound, good footed bulls to last our customers for many years. We also pay very close attention to both the dam and the sire in our program. They must have strong maternal traits and a balanced set of EPD's. Feel free to give Kieran or Kodie a call to discuss the 2024 offering. All bulls are sired verified.



**25**

## **25** NU-HORIZON **TRIUMPH** 305L

MALE 2314965 TK 305L JAN 4 2023

COLEMAN BRAVO 6313  
**COLEMAN TRIUMPH 9145**  
LAWSONS CHLOE C815

SILVEIRAS S SIS GQ 2353  
**NU-HORIZON EFFIE 104J**  
NU-HORIZON EFFIE 9014G

COLEMAN CHARLO 0256  
COLEMAN DONNA 714  
S A V RENOWN 3439  
LAWSONS CHLOE Z341  
SILVEIRAS STYLE 9303  
K N C CABIN CREEK SANDY 804  
GDAR GAME DAY 449  
NU-HORIZON EFFIE 7071E

BW	WW	YW	MILK	CE	MCE	
0.8	58	102	19	9	5	
<b>BW:</b> 75 lbs	<b>Nov. 5:</b> 854 lbs	<b>Feb. 9:</b> 1242 lbs	<b>ADG:</b> 4.04 lbs	<b>WPDA:</b> 3.1 lbs	<b>PROJ WT:</b> 1452 lbs	<b>AOD:</b> 2

- Awesome herd sire candidate that has presence.
- Big topped and muscular!
- Good footed
- Triumph has worked very well on our cattle.
- His GQ dam did an awesome job on her first try!
- **Heifer bull**
- **Sire Verified**



COLEMAN TRIUMPH 9145



26

26

NU-HORIZON **TRIUMPH** 352L

MALE APPLIED TK 352L MAR 6 2023

COLEMAN BRAVO 6313  
**COLEMAN TRIUMPH 9145**  
 LAWSONS CHLOE C815

COLE CREEK BLACK CEDAR 1100  
**COLEMAN EVERELDA ENTENSE6325**  
 COLEMAN EVERELDA ENTENSE 432

COLEMAN CHARLO 0256  
 COLEMAN DONNA 714  
 S A V RENOWN 3439  
 LAWSONS CHLOE Z341  
 O C C PAXTON 730P  
 BOHI ABIGALE 6014  
 COLEMAN REGIS 904  
 COLEMAN EVERELDA ENTENSE 578

PE	BW	WW	YW	MILK	CE	MCE
1.4	60	103	26	6.5	1.5	
<b>BW:</b>	<b>Nov. 5:</b>	<b>Feb. 9:</b>	<b>ADG:</b>	<b>WPDA:</b>	<b>PROJ WT:</b>	<b>AOD:</b>
86	722 lbs	1070 lbs	3.63 lbs	3.15	1280 lbs	8

- Interesting pedigree here
- 352L is the result of a direct embryo purchase from Colemans; they spoke very highly of his dam!
- He's big nuted, big topped, and good footed. The ideal beef bull!
- **Heifer or Cow bull**
- **Parent Verified**



COLEMAN EVERELDA ENTENSE6325



COLEMAN EVERELDA ENTENSE 432



# ARM RIVER METALS

VersaFrame Inc.



## METAL ROOFING & SIDING

CUSTOM TRIM & FULL LINE OF ACCESSORIES

1-306-731-2066      www.versaframe.ca

## MATERNALLY DRIVEN ET BROTHERS BY NATURAL LAW

- Natural Law needs no introduction
- Both brothers are nice headed, sound, with longevity built in their pedigree
- They come from an embryo purchase from Poplar Meadows
- Keep these full brothers together to create an incredible heifer pen!
- **Heifer bulls**
- **Parent Verified**



## 27 NU-HORIZON **NATURAL LAW** 338L

MALE 2352901 TK 338L FEB 21 2023

S A V BISMARCK 5682  
**BAR-E-L NATURAL LAW 52Y**  
 BAR-E-L MAGNOLIA 143K

CONNELY CONSENSUS 7229  
**POPLAR MEADOWS TIBBIE 52'12**  
 POPLAR MEADOWS TIBBIE 3'10

G A R GRID MAKER  
 S A V ABIGALE 0451  
 BAR-E-L MCC 365 ICON 20H  
 DOUBLE FOUR DUCHESS 12G  
 CONNEALY CONSENSUS  
 BLUE LILLY OF CONANGA 16  
 HYLINE RIGHT TIME 338  
 MVF TIBBIE 26R

BW	WW	YW	MILK	CE	MCE	
1.4	54	98	22	6.5	9.5	
<b>BW:</b> 77 lbs	<b>Nov. 5:</b> 758 lbs	<b>Feb. 9:</b> 970 lbs	<b>ADG:</b> 2.21 lbs	<b>WPDA:</b> 2.75 lbs	<b>PROJ WT:</b> 1180 lbs	<b>AOD:</b> 11

27



## 28 NU-HORIZON **NATURAL LAW** 345L

MALE 2352819 TK 345L FEB 26 2023

S A V BISMARCK 5682  
**BAR-E-L NATURAL LAW 52Y**  
 BAR-E-L MAGNOLIA 143K

CONNELY CONSENSUS 7229  
**POPLAR MEADOWS TIBBIE 52'12**  
 POPLAR MEADOWS TIBBIE 3'10

G A R GRID MAKER  
 S A V ABIGALE 0451  
 BAR-E-L MCC 365 ICON 20H  
 DOUBLE FOUR DUCHESS 12G  
 CONNEALY CONSENSUS  
 BLUE LILLY OF CONANGA 16  
 HYLINE RIGHT TIME 338  
 MVF TIBBIE 26R

BW	WW	YW	MILK	CE	MCE	
1.4	54	98	22	6.5	9.5	
<b>BW:</b> 83 lbs	<b>Nov. 5:</b> 679 lbs	<b>Feb. 9:</b> 944 lbs	<b>ADG:</b> 2.76 lbs	<b>WPDA:</b> 2.71 lbs	<b>PROJ WT:</b> 1154 lbs	<b>AOD:</b> 11

28



POPLAR MEADOWS TIBBIE 52'12 PM Tibbie 216'15- FULL SISTER

Internet Bidding Available



For more information call:

Mark Shologan 780-699-5082 or Purebred Team 780-991-3025

# 31 NU-HORIZON PRAIRIE GOLD 379L

MALE 2330072 TK 379L MAR 30 2023

FF BLACK GOLD JF C19  
**J SQUARE S PRAIRIE GOLD 989G**  
 J SQUARE S GEORGINA 82C

REMITALL F RAGE 9A  
**HBH BLACKCAP 94C**  
 HBH BLACKCAP 273Z

CONNELLY BLACK GRANITE  
 JF BARBARAMERE Y3  
 SANKEYS JUSTIFIED 101  
 J SQUARE S GEORGINA 90Z  
 S A V 707 RITO 9969  
 REMITALL F KARMA 102W  
 CONNELLY THUNDER  
 HBH BLACKCAP 12S

BW	WW	YW	MILK	CE	MCE	
-0.5	45	83	24	9.0	10.0	
<b>BW:</b> 85 lbs	<b>Nov. 5:</b> 654 lbs	<b>Feb. 9:</b> 944 lbs	<b>ADG:</b> 3.02 lbs	<b>WPDA:</b> 2.99 lbs	<b>PROJ WT:</b> 1154 lbs	<b>AOD:</b> 8

- The youngest bull in the sale but he still packs a punch!
- Wide pinned and he carries his shape all the way down through his lower quarter
- He should sire a solid set of steers that the order buyers desire
- **Heifer or Cow bull**
- **Sire Verified**



# 34 NU-HORIZON JACKSON 367L

MALE 2315347 TK 367L MAR 10 2023

BEAR CREEK JACKSON 74E  
**EASTONDALE JACKSON 106'20**  
 EASTONDALE CASSIE 63'16

MUSGRAVE SKY HIGH 1535  
**J SQUARE S ECHO 823F**  
 J SQUARE S ECHO 326A

EASTONDALE JACKSON 63'15  
 BEAR CREEK 66S BLACKCAP 74A  
 NF EVEREADY AS2  
 EASTONDALE CASSIE 52'09  
 MUSGRAVE BIG SKY DMF  
 FLAG QUEEN W 00649  
 FF STIMULANT Y40  
 JUSTAMERE 2466 ECHO 516S

BW	WW	YW	MILK	CE	MCE	
1.5	52	91	23	6	8	
<b>BW:</b> 84 lbs	<b>Nov. 5:</b> 700 lbs	<b>Feb. 9:</b> 1064 lbs	<b>ADG:</b> 3.79 lbs	<b>WPDA:</b> 3.17 lbs	<b>PROJ WT:</b> 1274 lbs	<b>AOD:</b> 5

- Different pedigree here for our repeat customers
- Jackson was a consistent producer for us! He left us many great daughters that have nice udders
- This guy is level made, strong topped, and should be a good producer for his new owner!
- **Heifer bull**
- **Sire Verified**



## LEADING THE HERD

WITH RELIABLE FUELING SOLUTIONS.

### CALL TODAY.

AB: 403-651-3371  
 SK: 306-550-4935  
 MB: 431-337-9731

LEARN MORE @ [DMMENERGY.CA](http://DMMENERGY.CA)

**DMM** ENERGY  
 Moving Together, Growing Together



**LOTS  
35-41**

# BELL ANGUS

Ph: 306-591-7792  
Cell: 306-591-7792

**Kenneth & Sheila Bell**  
Box 27 Pense, SK SOG 3W0



Welcome to the 27th Triple A Bull Sale. We are offering 7 bulls in the sale. 6 are sired by bulls we chose to use in our AI program and one is by a home raised herd sire. Thank you to our past customers and we look forward to seeing you April 13.



**35**

## BELL RAINFALL 8L

MALE 2334307

NBK 8L JAN 30 2023

COLEMAN CHARLO 0256  
**S A V RAINFALL 6846 DMF**  
S A V BLACKCAP MAY 4136

CREEKVIEW IDEAL 4Y  
**BELL QUEEN 35D**  
BELL QUEEN 30Y

O C C PAXTON 730P  
BOHI ABIGALE 6014  
S A V 8180 TRAVELER 004  
S A V MAY 2397 CAF  
VALLEY BLOSSOM IDEAL 1W  
CREEKVIEW PRIDE 207T  
BELL RIBSTONE 53U  
BELL C L QUEEN 2U

A long bodied, light birth weight S A V Rainfall son. He should work well for anyone needing a heifer bull.

BW	WW	YW	MILK	CE	MCE	
0.1	47	87	26	7	10	
<b>BW:</b> 78 lbs	<b>Nov. 5:</b> 848 lbs	<b>Feb. 9:</b> 1172 lbs	<b>ADG:</b> 3.38 lbs	<b>WPDA:</b> 3.13 lbs	<b>PROJ WT:</b> 1382 lbs	<b>AOD:</b> 7

# 36

## JASON BELL **GROWTH FUND** 10L

MALE 2334331 BJD 10L FEB 1 2023

BASIN PAYWEIGHT 1682  
**DEER VALLEY GROWTH FUND**  
DEER VALLEY RITA 36113

G A R SURE FIRE  
**JASON BELL PRIDE 5G**  
JASON BELL PRIDE 61E

BASIN PAYWEIGHT 0065  
21AR O LASS 7017  
PLATTEMERE WEIGH UP K360  
DEER VALLEY RITA 9457  
CONNEALY IN SURE 8524  
CHAIR ROCK 5050 G A R 8086  
NORTHERN VIEW EFFECTIVE 88B  
HLC 1220 PRIDE 263A

BW	WW	YW	MILK	CE	MCE	
1	66	121	27	9	10	
<b>BW:</b> 80 lbs	<b>Nov. 5:</b> 874 lbs	<b>Feb. 9:</b> 1278 lbs	<b>ADG:</b> 4.21 lbs	<b>WPDA:</b> 3.43 lbs	<b>PROJ WT:</b> 1488 lbs	<b>AOD:</b> 4

Deep bodied, hairy bull sired by Growth Fund. With only an 80lb. birth weight, he should be a good candidate for heifers or cows.



36

# 37

## BELL **BRUTUS** 14L

MALE 2334328 SJB 14L FEB 3 2023

BALDRIDGE BRONC DMF  
**BROOKDALE BRUTUS 390**  
BROOKDALE JODIE 786

NORTHERN VIEW EFFECTIVE 88B  
**BELL BLACK LUCY 14D**  
HI LOW BLACK LUCY 14Z

EF COMMANDO 1366  
BALDRIDGE ISABEL Y69  
S A V RESOURCE 1441 DMF  
BROOKDALE JODIE 73  
SCHIEFELBEIN EFFECTIVE 61  
NORTHERN VIEW TIBBIE 83T  
MOHNEN DYNAMITE 1356  
BELL BLACK LUCY 25P

BW	WW	YW	MILK	CE	MCE	
2.7	77	127	22	2	5	
<b>BW:</b> 88 lbs	<b>Nov. 5:</b> 942 lbs	<b>Feb. 9:</b> 1300 lbs	<b>ADG:</b> 3.73 lbs	<b>WPDA:</b> 3.5 lbs	<b>PROJ WT:</b> 1510 lbs	<b>AOD:</b> 7

A powerful, bigger framed bull that should add pounds on your calves. Dam is a good uddered, sharp fronted Effective 88B daughter.



37

**CALL OR EMAIL NOW TO BOOK YOUR SLAUGHTERS FOR MAY 2024**

**LOCATED ON HIGHWAY 11 BETWEEN LUMSDEN AND BETHUNE**

**BRAND NEW SLAUGHTER AND BUTCHER SHOP OPENING SPRING 2024. LARGE STOREFRONT WITH FULL SELECTION OF LOCALLY RAISED MEAT, INCLUDING AGED BEEF BY THE STEAK, 1/4, OR 1/2.**

**+1(306)-570-6328 (MEAT) SALES@BABCOMETS.COM**



**38**

BELL **RAINFALL** 16L

MALE 2334304 NBK 16L FEB 10 2023

COLEMAN CHARLO 0256  
**S A V RAINFALL 6846**  
 S A V BLACKCAP MAY 4136

NORTHERN VIEW UPWARD 92Y  
**BELL BLACK LUCY 1B**  
 BELL BLACK LUCY 36N

O C C PAXTON 730P  
 BOHI ABIGALE 6014  
 S A V 8180 TRAVELER 004  
 S A V MAY 2397 CAF  
 SITZ UPWARD 307R  
 NORTHERN VIEW EILEENMERE 89R  
 BELL STOCKADE 1L  
 BELL BLACK LUCY 14D

BW	WW	YW	MILK	CE	MCE	
1.3	50	97	26	6	10	
<b>BW:</b> 84 lbs	<b>Nov. 5:</b> 866 lbs	<b>Feb. 9:</b> 1252 lbs	<b>ADG:</b> 4.02 lbs	<b>WPDA:</b> 3.44 lbs	<b>PROJ WT:</b> 1462 lbs	<b>AOD:</b> 9

Well made, eye appealing son of Rainfall. His dam is a good milking Upward 92Y daughter that never dissapoints us with her calves. Maternal brothers have sold to Abound Livestock and Snake Bite Coulse Ranch in past Triple A sales.

**38**



**39**

BELL **SUPER CHARGER** 21L

MALE 2334313 NBK 21L FEB 11 2023

S A V RECHARGE 3436  
**S A V SUPERCHARGER 6813**  
 S A V MADAME PRIDE 0075

NORTHERN VIEW RIP 17D  
**BELL QUEEN 38F**  
 BELL QUEEN 44A

RITO 707 OF IDEAL 3407 7075  
 S A V BLACKCAP MAY 4136  
 S A F 598 BANDO 5175  
 S A V MADAME PRIDE 8264  
 WINDY WILLOWS BOOMER 98B  
 SKYBROOK PRIDE DOLLY 13B  
 NORTHERN VIEW UPWARD 92Y  
 BELL C L QUEEN 2U

BW	WW	YW	MILK	CE	MCE	
1.4	45	81	23	5	6	
<b>BW:</b> 82 lbs	<b>Nov. 5:</b> 770 lbs	<b>Feb. 9:</b> 1106 lbs	<b>ADG:</b> 3.5 lbs	<b>WPDA:</b> 3.05 lbs	<b>PROJ WT:</b> 1316 lbs	<b>AOD:</b> 5

Stretchy, smooth made by S A V Super Charger; the bull that sired our high selling bull in last years sale. His dam is an easy doing, very functional Northern View RIP 17D daughter.

**39**



40

BELL 25J **ATTRACTIVE** 27L

MALE 2334314 NBK 27L FEB 24 2023

SCHIEFELBEIN ATTRACTIVE 4565  
**BELL ATTRACTIVE 25J**  
BELL BLACKLASS 19F

NORTHERN VIEW RIP 17D  
**BELL EUGENIE ERICA 40F**  
BELL EUGENIE ERICA 54T

JMB TRACTION 292  
FROSTY ANSWER 3979  
S WHITLOCK 179 DMF  
BELL BLACKLASS 42A  
WINDY WILLOWS BOOMER 98B  
SKYEBROOK PRIDE DOLLY 13B  
NORTHERN VIEW QUANTUM 86P  
BELL EUGENIE ERICA 34R

BW	WW	YW	MILK	CE	MCE
3.1	54	100	27	0	4

BW:	Nov. 5:	Feb. 9:	ADG:	WPDA:	PROJ WT:	AOD:
89 lbs	854 lbs	1150 lbs	3.08 lbs	3.29 lbs	1360 lbs	5

Long bodied, smooth made bull sired by a son of Schiefelbein Attractive 4565.



41

BELL **SPECIALIST** 29L

MALE 2334311 NBK 29L FEB 27 2023

BALDRIDGE 38 SPECIAL  
**MOGCK SPECIALIST 98**  
MOGCK RUTH 1686

CREEKVIEW IDEAL 4Y NHF  
**BELL GRETCHEN 29E**  
BELL GRETCHEN 56W

EF COMMANDO 1366  
BALDRIDGE ISABEL Y69  
STYLES CASH R24  
MOGCK RUTH 264  
VALLEY BLOSSOM IDEAL 1W  
CREEKVIEW PRIDE 207T  
EASTONDALE ALLIANCE 79'07  
SUNNY GROVE GRETCHEN 59T

BW	WW	YW	MILK	CE	MCE
1	64	110	32	5	8

BW:	Nov. 5:	Feb. 9:	ADG:	WPDA:	PROJ WT:	AOD:
86 lbs	900 lbs	1282 lbs	3.98 lbs	3.69 lbs	1492 lbs	6

Big, growthy, deep sided bull that gained very well over the winter.



**SUPERIOR FORKLIFT**  
A Registered Kioti Dealer

1006 Kearns Crescent  
Regina, Sk.  
306-721-5438



**LOTS  
42-55**

# HI LOW ANGUS

Ph: 306-731-2940  
Cell: 306-581-7606

**Dan, Erin & Cassidy Howell**  
Box 30, RR 1, Lumsden, SK S0G 3C0  
hilowangus@sasktel.net



As the bull catalogs continue to clog your mail box, but you have managed to page through to the Hi Low Angus section... I would like to say welcome and thank you for your interest in our program. Three sire groups make up our offering.

- Deer Valley Growth Fund has been our "go to" sire for artificial insemination. Regardless of which cow or heifer you mate him to the results have been excellent.
- Hi Low Playbook 46H is our home bred walking bull from a thick, moderate framed cow that Lindsay Curtis showed multiple years in 4-H.
- Peak Dot Roughrider 2063G is our senior walking bull. Ryan Caragata spoke highly of 2063G. I was fortunate to be included in the deal to own him. Roughrider 2063G sons have been good and easy to market for both Ryan and I. Roughrider 2063G daughters are outstanding.

Please take note of the age of the dams. I am proud of the job these young momma cows have done. Many dams are first calf heifers. I would be most happy to assist should you have any questions regarding your bull selection.



## 42 HI LOW GROWTH FUND 18L

MALE 2326222 HTD 18L FEB 9 2023

BASIN PAYWEIGHT 1682  
**DEER VALLEY GROWTH FUND**  
DEER VALLEY RITA 36113

MOHNEN SOUTH DAKOTA 402  
**HI LOW BUXOM ANNE 40F**  
HILOW BUXOM ANNE 24B

BASIN PAYWEIGHT 006S  
21AR O LASS 7017  
PLATTEMERE WEIGH UP K360  
DEER VALLEY RITA 9457  
MOHNEN DENSITY 730  
MOHNEN JILT 539  
HILOW TIGER 12Y  
HILOW BUXOM ANNE 2W

- Gestation 272 days
- Actual weaning weight - 766 lbs (Oct.4)
- Our second year of Deer Valley Growth Fund progeny. The calves are consistently shorter gestation and have explosive growth through weaning to yearling. Deer Valley Growth Fund continues to post epd's in the breed top 1% for weaning, yearling, and carcass weight. Progeny of Deer Valley Growth Fund have been very marketable.

BW	WW	YW	MILK	CE	MCE	
1.2	70	126	23	7	10	
<b>BW:</b> 86 lbs	<b>Nov. 5:</b> 970 lbs	<b>Feb. 9:</b> 1312 lbs	<b>ADG:</b> 3.56 lbs	<b>WPDA:</b> 3.59 lbs	<b>PROJ WT:</b> 1522 lbs	<b>AOD:</b> 5

# 43 HI LOW GROWTH FUND 19L

MALE 2326224 HTD 19L FEB 9 2023

BASIN PAYWEIGHT 1682  
**DEER VALLEY GROWTH FUND**  
 DEER VALLEY RITA 36113

TEX PLAYBOOK 5437  
**HI LOW QUEEN MOTHER 19H**  
 HI LOW QUEEN MOTHER 67X

BASIN PAYWEIGHT 006S  
 21AR O LASS 7017  
 PLATTEMERE WEIGH UP K360  
 DEER VALLEY RITA 9457  
 BASIN PAYWEIGHT 1682  
 RITA 1C43 OF 9M26 COMPLETE  
 HOWE MAGIC 28R  
 LODGE QUEEN MOTHER 92S

BW	WW	YW	MILK	CE	MCE	
1	68	123	31	7	12	
<b>BW:</b> 83 lbs	<b>Nov. 5:</b> 954 lbs	<b>Feb. 9:</b> 1250 lbs	<b>ADG:</b> 3.08 lbs	<b>WPDA:</b> 3.45 lbs	<b>PROJ WT:</b> 1460 lbs	<b>AOD:</b> 3

- Gestation 277 days
- Actual weaning weight - 830 lbs (Oct.4)
- The heaviest calf at weaning. This mother is a moderate framed Tex Playbook daughter.



# 44 HI LOW GROWTH FUND 6L

MALE 2326209 HTD 6L FEB 3 2023

BASIN PAYWEIGHT 1682  
**DEER VALLEY GROWTH FUND**  
 DEER VALLEY RITA 36113

KG SOLUTION 0018  
**HI LOW BLACKCAP WYE**  
 HI LOW BLACKCAP WYE 9G

BASIN PAYWEIGHT 006S  
 21AR O LASS 7017  
 PLATTEMERE WEIGH UP K360  
 DEER VALLEY RITA 9457  
 MOGCK SURE SHOT  
 KG RITO LADY 8724  
 MOHNEN SOUTH DAKOTA 402  
 HI LOW BLACKCAP WYE 25D

BW	WW	YW	MILK	CE	MCE	
0.5	77	138	27	8	10	
<b>BW:</b> 74 lbs	<b>Nov. 5:</b> 812 lbs	<b>Feb. 9:</b> 1266 lbs	<b>ADG:</b> 4.73 lbs	<b>WPDA:</b> 3.41 lbs	<b>PROJ WT:</b> 1476 lbs	<b>AOD:</b> 2

- Gestation 276 days
- Actual weaning weight - 650 lbs (Oct.4)
- Calving ease both sides of this bull's pedigree. Lot 44 is a heifer's first calf. Performing extremely well he has lead the group of Triple A bulls with a 4.73 lb average daily gain.



# 45 HI LOW GROWTH FUND 11L

MALE 2326216 HTD 11L FEB 6 2023

BASIN PAYWEIGHT 1682  
**DEER VALLEY GROWTH FUND**  
 DEER VALLEY RITA 36113

ANDERSON REFLECTION 6106  
**HI LOW HEROINE 83J**  
 IVANHOE HEROINE 62B

BASIN PAYWEIGHT 006S  
 21AR O LASS 7017  
 PLATTEMERE WEIGH UP K360  
 DEER VALLEY RITA 9457  
 MCATL REFLECTION 120-577  
 LLB BEAUTY 9107U  
 SANDY BAR IDEAL 185W 216Y  
 IVANHOE HEROINE 11W

BW	WW	YW	MILK	CE	MCE	
1	64	115	27	7	11	
<b>BW:</b> 76 lbs	<b>Nov. 5:</b> 828 lbs	<b>Feb. 9:</b> 1200 lbs	<b>ADG:</b> 3.87 lbs	<b>WPDA:</b> 3.21 lbs	<b>PROJ WT:</b> 1410 lbs	<b>AOD:</b> 2

- Gestation 277 days
- Actual weaning weight - 733 lbs (Oct.4)
- A heifer's first calf. He combines calving ease with above average weaning and gain.





**46**

HI LOW **PLAYBOOK** 37L

MALE 2327019 HTD 37L FEB 17 2023

BASIN PAYWEIGHT 1682  
**TEX PLAYBOOK 5437**  
 RITA 1C43 OF 9M26 COMPLETE

KG SOLUTION 0018  
**HI LOW LADY MCHENRY 20H**  
 HILOW LADY MCHENRY 15U

BASIN PAYWEIGHT 006S  
 21AR O LASS 7017  
 SUMMITCREST COMPLETE 1P55  
 RITA 9M26 OF RITA 5F56 PRED  
 MOGCK SURE SHOT  
 KG RITO LADY 8724  
 HOWE MAGIC 28R  
 HILOW LADY MCHENRY 73M

BW	WW	YW	MILK	CE	MCE	
2.3	58	102	29	2	10	
<b>BW:</b> 92 lbs	<b>Nov. 5:</b> 884 lbs	<b>Feb. 9:</b> 1200 lbs	<b>ADG:</b> 3.29 lbs	<b>WPDA:</b> 3.36 lbs	<b>PROJ WT:</b> 1410 lbs	<b>AOD:</b> 3

- Gestation 278 days
- Actual weaning weight – 735 lbs (Oct.4)
- Grand dam Hi Low Lady McHenry 15U has weaned 14 calves.



**47**

HI LOW **PLAYBOOK** 43L

MALE 2350375 HTD 43L FEB 22 2023

TEX PLAYBOOK 5437  
**HI LOW PLAYBOOK 46H**  
 HI LOW PRIDE 117D

HI LOW STING 52G  
**HI LOW ERICA 66J**  
 HI LOW ERICA 3E

BASIN PAYWEIGHT 1682  
 RITA 1C43 OF 9M26 COMPLETE  
 GGA UPWARD 23B  
 HILOW PRIDE 47B  
 MERIT STING 7047E  
 MERIT BEAUTY 6100D  
 HILOW TIGER 1X  
 HILOW ERICA 29X

BW	WW	YW	MILK	CE	MCE	
1.3	45	82	28	5.5	8.5	
<b>BW:</b> 89 lbs	<b>Nov. 5:</b> 902 lbs	<b>Feb. 9:</b> 1262 lbs	<b>ADG:</b> 3.75 lbs	<b>WPDA:</b> 3.58 lbs	<b>PROJ WT:</b> 1472 lbs	<b>AOD:</b> 2

- Actual weaning – 789 lbs (Oct.4)
- One of three sons from our calving ease home raised Hi Low Playbook 46H herd sire. 46H has a -0.8 bw epd. 46H maintains his condition throughout the breeding season and has very docile disposition.

ACQUIRE THE

*Angus*

Advantage



**48**

HI LOW **PLAYBOOK** 46L

MALE 2327717 HTD 46L FEB 24 2023

TEX PLAYBOOK 5437  
**HI LOW PLAYBOOK 46H**  
 HI LOW PRIDE 117D

ANDERSON REFLECTION 6106  
**HI LOW ROSEBUD 118J**  
 HILOW ROSEBUD 1Y

BASIN PAYWEIGHT 1682  
 RITA 1C43 OF 9M26 COMPLETE  
 GGA UPWARD 23B  
 HILOW PRIDE 47B  
 MCATL REFLECTION 120-577  
 LLB BEAUTY 9107U  
 HF TIGER 5T  
 PRAIRIELANE 297E ROSEBUD 3050

- Actual weaning weight – 678 lbs (Oct.4)
- A heifer's first calf with calving ease on both sides of his pedigree.

BW	WW	YW	MILK	CE	MCE	
1	49	87	31	7	10	
<b>BW:</b> 81 lbs	<b>Nov. 5:</b> 854 lbs	<b>Feb. 9:</b> 1178 lbs	<b>ADG:</b> 3.37 lbs	<b>WPDA:</b> 3.36 lbs	<b>PROJ WT:</b> 1388 lbs	<b>AOD:</b> 2

**BPF**  
 QUALITY FEED BY-PRODUCTS  
 By-Pro Feeds Ltd.

P.O. Box 842  
 Moosomin, SK. S0G 3N0  
 (306) 435-2505  
 1-888-333-7033

**BTS**

**BRENDON STECYK  
 DYSART, SK  
 306-331-9869**

**AUTOMOTIVE REPAIR**

# 49

## HI LOW PLAYBOOK 32L

MALE 2327011 HTD 32L FEB 15 2023

TEX PLAYBOOK 5437  
**HI LOW PLAYBOOK 46H**  
HI LOW PRIDE 117D

KG SOLUTION 0018  
**HI LOW BLACKCAP BELL 29J**  
HI LOW BLACKCAP BELL 34G

BASIN PAYWEIGHT 1682  
RITA 1C43 OF 9M26 COMPLETE  
GGA UPWARD 23B  
HILOW PRIDE 47B  
MOGCK SURE SHOT  
KG RITO LADY 8724  
MOHNEN SOUTH DAKOTA 402  
BELL NV BLACKCAP 59C

BW	WW	YW	MILK	CE	MCE	
0.1	53	94	28	8	10	
<b>BW:</b> 78 lbs	<b>Nov. 5:</b> 860 lbs	<b>Feb. 9:</b> 1162 lbs	<b>ADG:</b> 3.15 lbs	<b>WPDA:</b> 3.29 lbs	<b>PROJ WT:</b> 1372 lbs	<b>AOD:</b> 2

- Actual weaning weight – 702 lbs (Oct.4)
- A heifer's first calf with calving ease on both sides of the pedigree. It is gratifying the watch the Hi Low Playbook 46H sons develop this year.



# 50

## HI LOW ROUGHRIDER 5L

MALE 2326202 HTD 5L FEB 1 2023

ELLINGSON ROUGHRIDER 4202  
**PEAK DOT ROUGHRIDER 2063G**  
PEAK DOT BARDOLIA 482B

KG SOLUTION 0018  
**HI LOW ERICA 45H**  
HI LOW ERICA 3E

CONNELY EARNAN 076E  
EA BLACKCLASS 8914  
PEAK DOT BOLD 204U  
BARDOLIA OF PEAK DOT 624U  
MOGCK SURE SHOT  
KG RITO LADY 8724  
HILOW TIGER 1X  
HILOW ERICA 29X

BW	WW	YW	MILK	CE	MCE	
0.5	55	98	20	6	8	
<b>BW:</b> 80 lbs	<b>Nov. 5:</b> 872 lbs	<b>Feb. 9:</b> 1242 lbs	<b>ADG:</b> 3.85 lbs	<b>WPDA:</b> 3.33 lbs	<b>PROJ WT:</b> 1452 lbs	<b>AOD:</b> 3

- Gestation 272 days
- Actual weaning weight – 725 lbs (Oct.4)
- Our lead off bull sired by Peak Dot Roughrider 2063G. Our six Roughrider bulls are like peas in a pod. Their average daily gain was 3.37 lbs. Roughrider 2063G sires calves that are born unassisted with above average growth and docility. Sons will have well above scrotal circumference and daughters will have beautiful udders.



# 51

## HI LOW ROUGHRIDER 33L

MALE 2327014 HTD 33L FEB 15 2023

ELLINGSON ROUGHRIDER 4202  
**PEAK DOT ROUGHRIDER 2063G**  
PEAK DOT BARDOLIA 482B

ANDERSON REFLECTION 6106  
**HI LOW ROSEBUD 77G**  
HILOW ROSEBUD 4Y

CONNELY EARNAN 076E  
EA BLACKCLASS 8914  
PEAK DOT BOLD 204U  
BARDOLIA OF PEAK DOT 624U  
MCATL REFLECTION 120-577  
LLB BEAUTY 9107U  
HF TIGER 5T  
PRAIRIELANE 297E ROSEBUD 3050

BW	WW	YW	MILK	CE	MCE	
2.8	55	97	24	2	7	
<b>BW:</b> 90 lbs	<b>Nov. 5:</b> 872 lbs	<b>Feb. 9:</b> 1204 lbs	<b>ADG:</b> 3.46 lbs	<b>WPDA:</b> 3.35 lbs	<b>PROJ WT:</b> 1414 lbs	<b>AOD:</b> 4

- Gestation 282 days
- Actual weaning weight – 732 lbs (Oct.4)



52

HI LOW ROUGHRIDER 29L

MALE 2350379 HTD 29L FEB 14 2023

ELLINGSON ROUGHRIDER 4202  
PEAK DOT ROUGHRIDER 2063G  
PEAK DOT BARDOLIA 482B

TEX PLAYBOOK 5437  
HI LOW QUEEN MOTHER 25H  
HILOW QUEEN MOTHER 57A

CONNEALY EARNAN 076E  
EA BLACKLASS 8914  
PEAK DOT BOLD 204U  
BARDOLIA OF PEAK DOT 624U  
BASIN PAYWEIGHT 1682  
RITA 1C43 OF 9M26 COMPLETE  
WILL ROLE MODEL  
HILOW QUEEN MOTHER 1N

BW	WW	YW	MILK	CE	MCE	
2.2	54	97	24	4	11	
<b>BW:</b> 82 lbs	<b>Nov. 5:</b> 856 lbs	<b>Feb. 9:</b> 1172 lbs	<b>ADG:</b> 3.29 lbs	<b>WPDA:</b> 3.25 lbs	<b>PROJ WT:</b> 1382 lbs	<b>AOD:</b> 3

- Gestation 274 days
- Actual weaning weight – 734 lbs (Oct.4.)



53

HI LOW ROUGHRIDER 47L

MALE 2350383 HTD 47L FEB 25 2023

ELLINGSON ROUGHRIDER 4202  
PEAK DOT ROUGHRIDER 2063G  
PEAK DOT BARDOLIA 482B

MOHNEN IMPRESSIVE 1093  
HI LOW PRIDE 47F  
HILOW PRIDE 17C

CONNEALY EARNAN 076E  
EA BLACKLASS 8914  
PEAK DOT BOLD 204U  
BARDOLIA OF PEAK DOT 624U  
BASIN EXCITEMENT  
MOHNEN JILT 787  
MOHNEN SOUTH DAKOTA 402  
HILOW PRIDE 62U

BW	WW	YW	MILK	CE	MCE	
2.4	58	99	21	3	7	
<b>BW:</b> 87 lbs	<b>Nov. 5:</b> 825 lbs	<b>Feb. 9:</b> 1154 lbs	<b>ADG:</b> 3.42 lbs	<b>WPDA:</b> 3.3 lbs	<b>PROJ WT:</b> 1364 lbs	<b>AOD:</b> 5

- Actual weaning weight – 700 lbs (Oct.4)
- Great grand dam Hi Low Pride 16K weaned 16 calves. Her udder and feet were exceptional her entire life.



**Scott Macknak**  
Owner

**SMS**  
MANUFACTURING  
CUSTOM-BUILT MOBILE  
GRAIN CLEANERS

Box 153  
Dysart, SK  
S0G 1H0

P: 306-432-2003  
G: 306-332-7140  
F: 306-432-2004  
E: sms@sasktel.net

www.smsmanufacturing.ca

**PRAIRIE AG PETROLEUM LTD.**  
210 McDonald St. N.  
Regina, Sask. S4N 5W3  
Tel: (306) 721-6880  
Fax: (306) 721-3748

**Husky**

Bulk Fuel, Cardlock, Lubes, Baler Twine



54

54

HI LOW **ROUGH RIDER** 65L

MALE 2335158 HTD 65L MAR 14 2023

ELLINGSON ROUGH RIDER 4202  
**PEAK DOT ROUGH RIDER 2063G**  
 PEAK DOT BARDOLIA 482B

HILOW EXCITEMENT 9C  
**HI LOW BLOSSOM 6E**  
 HILOW BLOSSOM 23Y

CONNEALY EARNAN 076E  
 EA BLACKCLASS 8914  
 PEAK DOT BOLD 204U  
 BARDOLIA OF PEAK DOT 624U  
 BASIN EXCITEMENT  
 HILOW BLOSSOM 20X  
 ISLA BANK WIDESPREAD 48T  
 HILOW BLOSSOM 7U

BW	WW	YW	MILK	CE	MCE	
0.9	54	95	23	6	10	
<b>BW:</b> 77 lbs	<b>Nov. 5:</b> 764 lbs	<b>Feb. 9:</b> 1062 lbs	<b>ADG:</b> 3.10 lbs	<b>WPDA:</b> 3.2 lbs	<b>PROJ WT:</b> 1272 lbs	<b>AOD:</b> 6

- Actual weaning weight – 655 lbs (Oct.4.)
- Dam Hi Low Blossom 6E has raised bulls who have sold to Rocky Lake Ranch and Steve and Judy Krylchuk. 2 daughters have been retained.



55

55

HI LOW **ROUGH RIDER** 83L

MALE 2337187 HTD 83L MAR 21 2023

ELLINGSON ROUGH RIDER 4202  
**PEAK DOT ROUGH RIDER 2063G**  
 PEAK DOT BARDOLIA 482B

KG SOLUTION 0018  
**HI LOW LADY ANN 6F**  
 HILOW LADY ANN 76C

CONNEALY EARNAN 076E  
 EA BLACKCLASS 8914  
 PEAK DOT BOLD 204U  
 BARDOLIA OF PEAK DOT 624U  
 MOGCK SURE SHOT  
 KG RITO LADY 8724  
 HILOW IDEAL 43A  
 HILOW LADY ANN 2A

BW	WW	YW	MILK	CE	MCE	
2.6	63	111	21	2	8	
<b>BW:</b> 94 lbs	<b>Nov. 5:</b> 812 lbs	<b>Feb. 9:</b> 1114 lbs	<b>ADG:</b> 3.14 lbs	<b>WPDA:</b> 3.43 lbs	<b>PROJ WT:</b> 1324 lbs	<b>AOD:</b> 5

- Actual weaning weight – 670 lbs (Oct.4)
- Our youngest bull in the offering born March 21st . Hi Low Lady Ann 6F son last year sold to Gordon Gerrard.

**CLAYTON CURTIS**

Assistant General Manager  
 ccurtis@masterfeeds.com  
 DIRECT 306-790-5557 | CELL 306-539-9486

745 Park Street, Regina, Saskatchewan S4N 4Y4  
 PHONE 306-721-2727 | FAX 306-721-3141



VEHICLE WRAPS & GRAPHICS • SIGNS  
 BANNERS • TRADE SHOW DISPLAYS

PH: **306.924.4026**





CASE IH

CNH INDUSTRIAL

GENUINE PARTS



SASKATCHEWAN STOCK GROWERS Association



Between now and December 31st, 2024 active Members of the SSGA will receive a **\$1,250 Young's Equipment Gift Card** for Parts and/or Service at any Young's Equipment location with the purchase of any of the following new units:

- Case IH MFD Loader Tractor (60-185 HP)
- Case IH RB565 Round Baler
- NDE Vertical Mixer
- Highline BP60 series Bale Pro®

In addition to that, **we will donate \$250 per unit sold** to the Saskatchewan Stock Growers Association to support their formidable cause.



YOUR CHOICE FOR ADVANCED BOVINE GENETIC SERVICES

# BovGen

## SIRE SERVICES

Domestic Semen Collection  
Export Semen Collection  
Sire Housing  
Semen Storage  
Semen Shipping

## DONOR SERVICES

Embryo Transfer  
In-Vitro Fertilization (IVF)  
Embryo Export  
Donor Housing  
Recipient Herd  
Fall Weaned Calf Program  
Embryo Storage  
Embryo Shipping

# BovGen

Tyson Buyer DVM, B.Sc | (306) 339-7673 | NW 14-17-27 W2 Moose Jaw, SK | tyson@bovigen.net



## HESSTON



# ROLL OUT THE RED BALER.

Meet the new baler that's already stolen the show with its winning combination of toughness and ease of use. Bank on the Hesston by Massey Ferguson® 1 Series round baler for dependable, long-lasting service, thanks to a heavy-duty design and build, capable of maintaining your desired bale density, even at higher speeds. Plus, features like innovative net loading and an optional hydraulic drop floor ease your workload during long days in the field.

Visit [www.masseyferguson.us](http://www.masseyferguson.us) and discover how the Hesston® 1 Series round baler can turn your baling into a premier event.



2 S Plains Rd W  
Emerald Park, SK S4L 1C6

306-781-1077  
[www.nickservice.com](http://www.nickservice.com)

©2023 AGCO Corporation. Massey Ferguson is a worldwide brand of AGCO Corporation. Hesston is a brand of AGCO. AGCO, Massey Ferguson and Hesston are trademarks of AGCO. All rights reserved.

# TERMS *and* CONDITIONS

## TERMS...

The terms of the sale are cash or cheque, payable at par at the sale location. The right of property shall not pass until after settlement has been made; no invoicing on buyers in attendance unless previous arrangements have been made. Every animal sells to the highest bidder and in cases of disputes, the auctioneer's decision will be final.

Announcements made from the auction block will take precedence over the printed matter in the catalogue. Current exchange rates will be announced sale day. All monies are in Canadian funds.

## CERTIFICATE OF REGISTRATION...

Each animal will carry papers issued by the Canadian Angus Association. A certificate of registry duly transferred will be furnished to the buyer for each animal after payment has been made.

## PEDIGREE ESTIMATES...

Pedigree Estimates (PE) are created on the projected mating of the animal's sire and dam based on averages of the two, creating estimated values that do not hold the same accuracy of actual EPDs issued from the association and should be used as such.

## HEALTH...

All animals in the sale have met all necessary health requirements.

## GUARANTEE...

Each animal becomes the purchaser's risk immediately after the animal is sold. All animals in this sale will be sold under the terms and guarantees set forth by the Canadian Angus Association with regard to health, freedom from defects and from both reproductive and specific genetic unsoundness.

## PHONE, MAIL & WIRE BIDS...

Bidders unable to attend the sale may phone, wire or mail their bids and instructions to the sale manager, auctioneer or special representatives. Bids must be received in sufficient time prior to the sale.

## ERRORS...

All announcements at sale time, written or oral, supersede any written material in the catalogue.

## LIABILITIES...

All persons attend the sale at their own risk. The seller, facility owner and sale manager assume no liability, legal or otherwise, for any accidents that occur. It is understood that T Bar C Cattle Co. (2013) Ltd. is acting only as a medium between buyer and seller and is not responsible for any obligations to collect or enforce collection of any monies between parties and any legal action that may, in extreme cases, be taken must be between buyer and seller. T Bar C Cattle Co. (2013) Ltd. assumes no responsibility of any credit extended by the seller to the buyer. The buyer must look to the seller for fulfillment of all guarantees and representations made hereunder.

## INSURANCE...

It is strongly recommended you insure your bulls after the sale.

## DELIVERY...

If you take your bull(s) home the day of the sale you will receive a **\$100 credit** per bull. The Triple AAA group offers **free delivery within a 300km** radius of Moose Jaw.

## JASON EVASHENKO CUSTOM TUB GRINDING



**306-221-4488**  
Box 295, Kenaston, SK  
S0G 2N0

## LUTHER CATTLE BRUSH & OILER

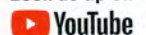
*"The one they love to use"*

**CLIFF LUTHER**

**(306) 734-2997**

Box 7, Aylesbury, SK S0G 0B0

Look us up on



Return Undeliverable  
Canadian Addresses To:  
T Bar C Cattle Co. Ltd.  
Box 2330  
Warman, SK S0K 4S0



RETURN POSTAGE GUARANTEED  
PORT DE RETOUR GARANTI

**COTTONWOOD ANGUS**



**NU-HORIZON ANGUS**



**WILLOWVIEW ANGUS**



**HI LOW ANGUS**



**TRIPLE H ANGUS**



**BELL ANGUS**



**4K ANGUS**



Created by  
**Today's**  
Publishing