



CITY VIEW SIMMENTALS & **ABOUND LIVESTOCK**

With Guests Sunnyside Simmentals & Gold-Bar Livestock

13th

TUESDAY, MARCH 21, 2023, Sale Time 1 pm
JOHNSTONE AUCTION MART, Moose Jaw, SK

ANNUAL BULL SALE

City View Simmentals and Abound Livestock 13TH ANNUAL BULL SALE

With Guests Sunnyside Simmentals & Gold-Bar Livestock

Tuesday, March 21, 2023, Sale Time: 1PM CST

Sale Location : Johnstone Auction Mart

Moose Jaw, Saskatchewan

4 miles west of Moose Jaw on the Trans Canada highway.

Monday 5:00 p.m.

View the bulls, enjoy refreshments and pizza.

Tuesday Lunch at 12:00 p.m.

Sale at 1:00 p.m.



WATCH AND BID ONLINE

Create your Bidding Account with DVAuction!

- Go to www.dvauction.com and click on "Create New Account".
- Fill in all fields and accept the Privacy Policy & Terms and Conditions. Click on Create New Account.
- On the next screen, click Apply for Bidding.
- Choose Option 1) Credit Card Approval or Option 2) Bank Approval
- * if you are not comfortable providing this info to DVAuction, that is ok! Call Sarah Hasson at 306-681-5340
- Check your Email for an Account Activation message from DVAuction. Click this link and you are all ready to go.
- On sale day, log in to www.dvauction.com with your email address and password.
- Click the green "View" button beside the 11th Annual Cityview/Abound Livestock & Friends Bull Sale. This will take you to the sale site.
- Accept the Terms & Conditions (left side of screen) to get your bid button.
- Log in 1 hour before sale time to Practice Bidding.
- Let us make it even easier for you! Contact Sarah Hasson at 306-681-5340 to get set up over the phone.
- DVAuction Tech Support 402-316-5460

TERMS AND CONDITIONS:

The terms of the sale are cash or cheque. All settlements must be made with the clerk following the sale before any cattle will be released.

Disputes: Bidding will be re-opened between the parties involved in the dispute. If no further bids are made, the buyer will be the person from whom the auctioneer accepted the last bid. The auctioneer's decision on all disputes will be final.

ANNOUNCEMENTS:

All announcements made from the auction block will take precedence over the printed material matter in the catalog. Buyers are therefore cautioned to pay attention to such disclosures.

ACCIDENTS:

Although every precaution will be taken to protect the safety and comfort of the buyers, neither the owner, the auctioneer of Association assumes any responsibility in this matter and disclaims any liability, legal or otherwise, in the event of accident or loss of property.

SALE DAY PHONES

| | |
|------------------------------|--------------|
| Johnstone Auction Mart | 306-693-4715 |
| Blaine Barnett | 306-631-6618 |
| Brian Barnett | 306-631-7539 |
| Joe Barnett | 403-465-2805 |
| Tina Barnett | 306-631-5183 |
| Lisa Martin | 306-684-5884 |
| Tom Turnbull | 306-527-6624 |
| Aaron Birch | 403-485-5518 |
| Sarah Hasson | 306-681-5340 |

SALE STAFF

| | |
|-----------------------------------|-------------------------|
| Auctioneer, Scott Johnstone | 306-693-4715 (business) |
| | 306-631-0767 (cell) |
| Ringman, Nate Marin | 306-869-7130 (cell) |
| Ringman, Don Oberg | 780-678-6926 (cell) |
| DV Auction, Sarah Hasson | 306-681-5340 (cell) |



VIDEOS OF THE BULLS

**Videos of the bulls may be viewed
online at DVAuction.com**

FERTILITY

All bulls will be semen tested prior to the sale.

IN-HERD SEMEN

We reserve the right to collect semen on any bull in the offering at our expense and your convenience.

PHONE BIDS/SIGHT UNSEEN:

We hope you can visit the farm before the sale to make your selection or come early to Johnstones. If you can't make it, give us a call to discuss what you're looking for. If we have talked before, your satisfaction is guaranteed. Online bidding and videos will be available on dvauction.com

PRE-SALE MEAL:

Join us for pizza Monday night at 5, and lunch on Tuesday at noon.

GUARANTEE:

All bulls sell under the terms and conditions of sale as recommended by the Canadian Simmental and Angus Associations.

INSURANCE:

We strongly recommend insuring your purchases sale day. See Larry Toner of Stockman's Insurance at the sale. 306-834-7652

DELIVERY

Bring your trailer sale day and we'll deduct \$100.00 per bull from the purchase price or bulls can return to the farm until April 15. Bulls will be delivered free of charge up to 300 km from Moose Jaw at the seller's convenience as soon as possible following the sale. Other destinations can be arranged between the buyer and seller. Buyers are encouraged to insure their purchases.

Give us a call if you have any questions. We always do our best to work with you within reason.

Thank You!

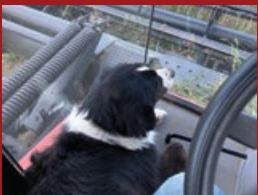
TO OUR 2022 BUYERS

HAYWIRE FARMS LTD
K G MCLAREN FARMS LTD
L-DEE STOCK FARM
HAWKINS BROTHERS LAND & CATTLE
COLD CREEK LAND & CATTLE CO
BRAD & BECKY CHRISTOPHERSON
TREVOR BENSON
SCOTT LAND & CATTLE
EXCEL GRAZING CORP
MAPLE POINT RANCH
LUV-N-IT CATTLE CO
BEECHINOR BROS. SIMMENTALS
DEVON & RANDI WENZEL
JARED SCHOLLAR
JOHNATHAN HOWE
SPRINGWATER RANCH LTD
RICK & BONNIE CLUBBE
GEORGE & GAIL BOSSENCE

MEYERS SIMMENTAL
FLYING TL SIMMENTALS
TRIANGLE 33 SIMMENTALS
CYPRESS FARMS LTD
HIGH COUNTRY CATTLE SERVICES
MARTYNOOK FARM
HAZELDEAN FARM LTD
RYAN & BOBBIE MACHMER
LDD FARMS
BLACKBERRY LAND & CATTLE CO. LTD
JACOB CARROBOURG & JANELLE BERG
IVANHOE ANGUS
2 E RANCH INC.
ROY & PAM KIRBY
BACK 40 RANCH LTD.
JOSHUA & KATHY STEVENS
BAINTREE ANGUS
ROD & CHASTA WARD
JARON ARGUIN



ABOUND LIVESTOCK



Welcome to the 2023 City View Simmentals and Abound Livestock bull sale! To start off 2023, we installed a new alarm system in our house to make sure we didn't miss checking cows in the middle of the night. It's been working great and every three hours it wakes you and the best part is you don't have to set it! For those that don't know Lisa and I welcomed our first child on January 6. Cassie Mae Barnett has fit right in with the flow here!

2022 once again made our girls work big time with most of them having to walk over a mile to get a drink of "marginal" water, grass was less than ideal and then we got blasted with winter earlier than any of us had hoped. However, they somehow still weaned off respectable weights last fall. We are all hoping that 2023 is the year for them to have some green grass, fresh water and we as producers see some strong cattle prices.

The focus here at Abound hasn't changed much in the last 6 years. Our goal is to build a cow herd with sound structure and strong maternal strengths that we can move forward with. I don't need to tell you that this takes time, we all know that but please know we are focused on building you, the customer, a better product every year by sourcing new genetics but at the same time keeping things realistic. We have used some new and some old but all proven genetics via AI, embryo transfer and walking bulls in order to find what works. This is why you will find a few single offerings in the line up. We feel that all the bulls have a lot of good to provide it just comes down to what will work for your program. Fresh bulls are the key to success and with the cull market as strong as it is you can turn in the old boys for a good return right now.

We would once again like to welcome and thank Gold Bar Livestock of Caron, Sk. Their bulls have been developed alongside the Abound bulls since weaning on Oct.3 and the Gold Bar crew are always there to help out when needed. Same as previous years, the bulls are developed in a 20 acre paddock with steep native hills to give them lots of room to do what bulls do. They are also powered by Trouw Nutrition and we need to thank one of the best feed reps, Jessica Hextall, for always going over and above. The bulls are pail fed a 14% textured grower ration and have free choice grass hay.

In closing, Lisa and I can't thank our past customers enough and look forward to working with you and all new customers in the future. We welcome you to stop by the farm anytime for a tour or call any time. The cattle industry is people driven. This is a family business and our way of life so trust that we are here to stay and build long term relationships with you, our customers, and friends.

Thank you and see you soon!

Brian & Lisa

Lot 1

Now here is a bull that puts it all together in a seamless package! A bull that we wouldn't hesitate to call purebred breeder grade and we would use ourselves if a third of our cow base wasn't related. Harvestor 203K has great structure, ideal frame, beautiful hair, a perfect skull and muzzle shape as well as great scrotal dimension. His full sister was selected in 2021 to be part of the Harvest Classic sale and now resides with the great ones at Shiloh Cattle Company near Hanna, Alberta. His sire, Harvestor 66D, is a complete package. He is super correct with a beautiful big foot and incredible muscle shape. His dam is a real powerhouse female with a perfect udder, perfect foot and a staple in our Abound herd.



Left: Dam of Lot 1
Right: Sister of Lot 1



1

ABOUND HARVESTOR 203K

2253072 / BARN 203K / Purebred / Jan 20/22

S A V HARVESTOR 0338
BLACK RIDGE HARVESTOR 66D
 BLACK RIDGE LEONA 22W
 MERIT 2102
IVANHOE EDGE PRIDE 31D
 IVANHOE EDGE PRIDE 46Y

Act BW: 99

Adj WW: 699

Adj YW: 1356

Oct 3/22 WT
848

BW 5.4 WW 51 YW 91 Milk 19 CE -4 MCE 4

2

ABOUND HARVESTOR 212K

2252851 / BARN 212K / Purebred / Feb 2/22

S A V HARVESTOR 0338
BLACK RIDGE HARVESTOR 66D
 BLACK RIDGE LEONA 22W
 SANDY BAR IDEAL 185W 216Y
IVANHOE BLACKBIRD 2A
 IVANHOE BLACKBIRD 34Y

Act BW: 98

Adj WW: 691

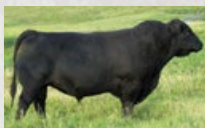
Adj YW: 1225

Oct 3/22 WT
801

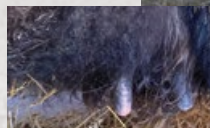
BW 4.4 WW 49 YW 82 Milk 16 CE -4 MCE 5

Lot 2

This attractive Harvestor son comes from the Blackbird cow family. A cow that has traditionally been a female maker for our herd and others. In 2020, a half sister to this guy sold in the Harvest Classic sale to Ivanhoe Angus. We have waited a lot of years for our first ever bull calf from Blackbird 2A and it was well worth the wait. Harvestor 212K is big middled, super stout and very smooth made. He is an overall well-balanced power bull that checks off a lot of boxes!



Left: Sire of Lots 1-4
Right: Udder of Dam





A square hiped, deep sided, soft made Harvestor son that stands on a large foot with some added bone. He comes from the tried, true and proven Harvestor sire crossed with the Lassie cow family. A cow family that we have 4 different generations of daughters working in our herd. These females pack a punch and know how to get the job done right.

ABOUND HARVESTOR 231K

2253082 / BARN 231K / Purebred / Mar 3/22

S A V HARVESTOR 0338
BLACK RIDGE HARVESTOR 66D
BLACK RIDGE LEONA 22W
MERIT MERGER 6061D
ABOUND LASSIE 934G
HILOW LASSIE 71A

Act BW: 99
Adj WW: 716
Adj YW: 1267
Oct 3/22 WT
703

BW 6.4 WW 54 YW 98 Milk 20 CE -6 MCE 4



Dam of Lot 3



Granddam of Lot 3



Harvestor 66D has been the core of our program since we started. A bull that was really hard to part with as his offspring was so consistent in their make up year after year. Nice clean heads, good feet and lots of muscle pattern and shape. Harvestor 223K is a larger framed Harvestor son out of the trusted 18Z cow that for her age has the most perfectly shaped tight udder.

ABOUND HARVESTOR 223K

2252850 / BARN 223K / Purebred / Feb 17/22

S A V HARVESTOR 0338
BLACK RIDGE HARVESTOR 66D
BLACK RIDGE LEONA 22W
SANDY BAR INNOVATOR 46R
IVANHOE DNA PRIDE 18Z
IVANHOE DNA PRIDE 38R

Act BW: 93
Adj WW: 757
Adj YW: 1440
Oct 3/22 WT
832

BW 4.8 WW 60 YW 105 Milk 17 CE -4 MCE 0



Udder of Dam at 10 years



Feet of Sire at 6 years



Thank You!



This past October we had the opportunity to be part of the Masterpiece Sale. Thank you to Will Reider and Ivanhoe Angus for purchasing Black Lucy 221K. Will has been working with her and is getting ready to hit up some junior shows this summer!

5

ABOUND DENSITY 202K

2256202 / BARN 202K / Purebred / Jan 20/22

S A V 8180 TRAVELER 004
S A V 004 DENSITY 4336
 S A V MAY 7238
 SITZ UPWARD 307R
NORTHERN VIEW RUTH 82Z
 NORTHERN VIEW RUTH 84S

Act BW: 86
 Adj WW: 651
 Adj YW: 1269
 Oct 3/22 WT
 791

BW 2.8 WW 53 YW 98 Milk 30 CE 6.5 MCE 4.5



Full brother to Lot 5



LOT 5

This maybe an older pedigree but that just goes to show how some things can be timeless. 202K is the result of our first embryo transfer here at Abound. His full brother BARN 201k is being retained at Abound. S A V Density is one of the greatest female makers in the industry and some of the most pronounced well known cow herds have Density at the base. Barn 202K's dam Ruth 82Z and grand dam Ruth 84S are carrying Elite/premier status with the CAA. Both dam and grand dam are still active as I write this producing 30 combined progeny. The Ruth cow family is a staple at Northern View Angus as well as J Square S Angus, they hold their own and have incredible longevity. If you make your own replacement heifers, grab a hold here and don't weaken till you own him!

6

ABOUND ALCATRAZ 215K

2256207 / BARN 215K / Purebred / Feb 4/22

HF ALCATRAZ 60F MAF
J SQUARE S ALCATRAZ 24H
 J SQUARE S ELLEN 335A
 MERIT MERGER 6061D
ABOUND HEROINE A 921G
 IVANHOE HEROINE A 35B

Act BW: 90
 Adj WW: 695
 Adj YW: 1226
 Oct 3/22 WT
 756

BW 4.6 WW 57 YW 101 Milk 28 CE -3 MCE 2



Dam of Lot 6



Grandsire of Lot 6



LOT 6

Alcatraz 215K was a bull that got out numbered by the girls in his sire group last year. We are very excited about the big capacity Alcatraz females in our replacement heifer pen right now and they look to have a bright future ahead. All offspring have a perfect disposition, great hair and easier fleshing capabilities.

7

ABOUND ENTICE 222K

2256214 / BARN 222K / Purebred / Feb 17/22

MOGCK ENTICE
HI LOW ENTICE11H
 HI LOW LADY ANN 1E
 MERIT 2102
IVANHOE BLACK LUCY 41B
 IVANHOE BLACK LUCY 32Y

Act BW: 94
 Adj WW: 740
 Adj YW: 1337
 Oct 3/22 WT
 812

BW 2.6 WW 59 YW 109 Milk 23 CE -1 MCE 1



Dam of Lot 7



Sister to Lot 7



Grandsire of Lot 7



LOT 7

We have really appreciated the honesty and practicality of the Entice cattle in the industry. This past fall, we had the opportunity to sell a half sister to Entice 222K in the Master Piece sale and she was very well received. A heifer that displayed a lot of power with a good balance of broodiness and style. Much can be said the same about this Entice 222K bull. He has tons of rugged muscle shape, frame and power, and is backed by a strong set of EPD values. This is your true cow bull!



Sire lots 8-11

Lot 8

Rainy Day 214K is a bull that was made for the heifer pen. Incredibly long spined and is backed by a cow family that has high maternal calving ease traits. He also stems back to SAV Rainfall, one of the most recent well known heifer rated bulls in the industry. This is a bull that is sure to keep his size in check and won't get too big too fast.



Dam of Lot 8

8

ABOUND RAINY DAY 214K

2253026 / BARN 214K / Purebred / Feb 3/22

| | |
|---------------------------|-----------------|
| S A V RAINFALL 6846 | Act BW: 66 |
| BELL RAINY DAY 4H | Adj WW: 628 |
| BELL BLACK LUCY 1B | Adj YW: 1079 |
| BLACK RIDGE HARVESTOR 66D | Oct 3/22 WT 710 |
| ABOUND POLLYANNA 801F | |
| IVANHOE POLLYANNA 5A | |
| BW -3 | WW 40 |
| YW 75 | Milk 24 |
| CE 15 | MCE 14 |

9

ABOUND RAINY DAY 232K

2253033 / BARN 232K / Purebred / Mar 6/22

| | |
|-----------------------|-----------------|
| S A V RAINFALL 6846 | Act BW: 72 |
| BELL RAINY DAY 4H | Adj WW: 729 |
| BELL BLACK LUCY 1B | Adj YW: 1336 |
| 4M ELEMENT 405 | Oct 3/22 WT 672 |
| ABOUND BLACKBIRD 025H | |
| ABOUND BLACKBIRD 808F | |
| BW -1 | WW 54 |
| YW 96 | Milk 24 |
| CE 10 | MCE 11 |



Lot 9

For the past two years we have also used Rainy Day 4H on our commercial heifers. We have been very impressed with the calving ease, vigor, grow, and mass that the calves had come fall. Rainy Day 232K truly demonstrates the potential of this sire group. This March born calf has a tremendous rate of gain, carries his meat down low and has lots of overall mass. Backed by a strong set of EPD values, this guy will look good with your heifers!



Grandsire of Lots 8-11

Lot 10

Rainy Day 207K is another calving ease option. Like all the Rainy Day bulls on offer, he is as long as a freight train and very smooth made. His dam is a full sister to Lot 1 and is packed with the right pedigree to make her a future bull maker for years to come!



Granddam of Lot 10



10

ABOUND RAINY DAY 207K

2253068 / BARN 207K / Purebred / Jan 27/22

S A V RAINFALL 6846

Act BW: 62

BELL RAINY DAY 4H

Adj WW: 609

BELL BLACK LUCY 1B

Adj YW: 1200

BLACK RIDGE HARVESTOR 66D

ABOUND EDGE PRIDE 034H

Oct 3/22 WT
636

IVANHOE EDGE PRIDE 31D

BW -2.7 WW 37 YW 71 Milk 23 CE 14 MCE 12

11

ABOUND RAINY DAY 204K

2253032 / BARN 204K / Purebred / Jan 22/22

S A V RAINFALL 6846

Act BW: 52

BELL RAINY DAY 4H

Adj WW: 696

BELL BLACK LUCY 1B

Adj YW: 1307

MERIT MERGER 6061D

ABOUND ROYAL PRIDE 023H

Oct 3/22 WT
758

IVANHOE ROYAL PRIDE 3Z

BW -3.8 WW 46 YW 89 Milk 24 CE 15 MCE 14

Lot 11

Rainy Day 204K snuck up on us early on a cold January day but don't let his birth weight fool you. This is a bull that took right off and quickly picked up steam each day that went by. Showcasing the same length and style as his sire, here is an impressive looking bull that was made with calving ease in mind.



ABOUND TANNERITE 226K

2256190 / BARN 226K / Purebred / Feb 27/22

BORDER BUTTE BLASTER 305E
BORDER BUTTE TANNERITE 350G
 BORDER BUTTE MARION 221E
 BLACK RIDGE HARVESTOR 66D
ABOUND ROYAL PRIDE 814F
 IVANHOE ROYAL PRIDE 3Z

| |
|-----------------|
| Act BW: 95 |
| Adj WW: 689 |
| Adj YW: 1255 |
| Oct 3/22 WT 710 |

| | | | | | |
|--------|-------|--------|---------|-------|-------|
| BW 4.6 | WW 57 | YW 103 | Milk 20 | CE -1 | MCE 7 |
|--------|-------|--------|---------|-------|-------|



Tannerite 350G was a bull that we purchased from Border Butte Angus back in 2019. An injury unfortunately limited his time and progeny here at Abound but we think these two bulls are a great representation of the sire potential. BARN 226K and BARN 234K are $\frac{3}{4}$ siblings and are two bulls that are very similar in their make up and performance. Both being later born calves, they weaned off within pounds of each other and are still within pounds of each other to this day.



Sire of Lots 12-13

ABOUND TANNERITE 234K

2256192 / BARN 234K / Purebred / Mar 13/22

BORDER BUTTE BLASTER 305E
BORDER BUTTE TANNERITE 350G
 BORDER BUTTE MARION 221E
 BLACK RIDGE HARVESTOR 66D
ABOUND HEROINE A 811F
 IVANHOE HEROINE A 37B

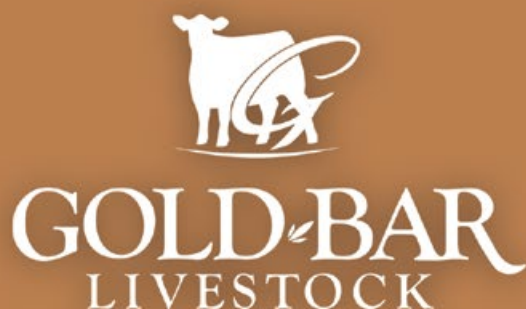
| |
|-----------------|
| Act BW: 102 |
| Adj WW: 728 |
| Adj YW: 1314 |
| Oct 3/22 WT 709 |

| | | | | | |
|--------|-------|--------|---------|-------|-------|
| BW 5.7 | WW 63 | YW 107 | Milk 22 | CE -5 | MCE 4 |
|--------|-------|--------|---------|-------|-------|



Dam of Lot 13

The dam of Tannerite 234K is a Harvester daughter and we can't speak highly enough of our Harvester females. Perfect udders, great mothering abilities, great temperament and cows that just go out and get the job done right. The last few years have been a true test on these females and if they can raise calves like this in the hard years, we can't wait to see what they will do in the good years! Similar to his $\frac{3}{4}$ sibling, Tannerite 226K, Tannerite 234K is well balanced, has lots of hair and keeps getting better as each day goes on.



Welcome - and thank you for showing interest in our stock. We are very proud of the bulls we have on offer this year. They are all AI sired and out of beautiful Mama cows. We pride ourselves in raising high performance, easy fleshing cattle. We are confident that these bulls will sire exceptional replacement females and ground pounding steer calves. We exhibited these bulls at the Swift Current Ag & Ex Pen show this past September where 2 of them placed in the top 9. The girls have halter broke these men and we of course stand behind them 100%. We look forward to seeing you at Johnstone's or online with DVAuction!

Sarah Hasson, Kaycee & Saige Buchanan
www.gold-bar.com

14

GOLD-BAR FEVER DREAM 101K

2252283 / GBL 101K / Purebred / Jan 1/22

COLEMAN CHARLO 0256

Act BW: 85

S A V REIGN 6845Oct 3/22 WT
825

S A V BLACKCAP MAY 4136

JS BOMBER 1Y

Jan 23/23 WT
1320**TRIPLE L SHAKE THAT 20B**

WAT-CHA SHAKE THAT 1S

BW 1.2 WW 57 YW 101 Milk 25 CE 6 MCE 7

Heaviest bull at weaning. Soft made and ultra deep sided.
Dam has been flushed.



Dam of Lot 14



LOT 14

15

GOLD-BAR TIKI LAND 117K

2252286 / SGBL 117K / Purebred / Jan 17/22

S POWERPOINT WS 5503

Act BW: 93

ELLINGSON PROFOUND 8155Oct 3/22 WT
816

EA ROSETTA 6157

S A V RESOURCE 1441

Jan 23/23 WT
1319**GOLD-BAR HEROINE 102E**

SHEIDAGHAN HEROINE 47B

BW 3.3 WW 70 YW 116 Milk 15 CE 3 MCE 6

Solid footed, muscular, long-spined bull. Dam is from one
of the best producing cow families. Very docile bull.



Dam of Lot 15



LOT 15

16

GOLD-BAR REVELATOR 113K

2252285 / KGBL 113K / Purebred / Jan 13/22

S POWERPOINT WS 5503

Act BW: 89

ELLINGSON PROFOUND 8155Oct 3/22 WT
802

EA ROSETTA 6157

MUSGRAVE 316 STUNNER

Jan 23/23 WT
1229**WWF STUNNER ERICA 52G**

WWF GAME DAY ERICA 20W

BW 2.2 WW 69 YW 111 Milk 21 CE 4 MCE 4

Very attractive, well-balanced bull. Dam is from one of the
top cow families at Windy Willows.



Dam of Lot 16



LOT 16

Welcome to the 2023 Bull Sale! We are so grateful to again be part of this great event. It is a pleasure to be surrounded by such wonderful people and friends. Thank you to all past bidders and buyers as well as new customers attending for the first time. Your support of our program is greatly appreciated. Congratulations to the Barnett family for bringing an exceptional quality of bulls to present to you this year.

The goal of our program is to raise bulls which are structurally sound with moderate frame and birth weight to provide calving ease and convenience to the commercial cattle producer. We have developed cow families within our herd that we beleive have the maternal traits to provide productivity and consistency. Our bull has been at City View since last fall so please feel free to call us or Blaine and Tina with any questions or to view the bulls. See you at Johnstone's on March 21st.

Tom & Sharon Turnbull and family



LOT 17



Sire of Lot 17

17

SUNNYSIDE 32K

CA-BPG1402859 / TJT 32K / Black / Polled / Fullblood / Jan 16/22

MADER WALK THIS WAY 224B
SVS WALKER 719E
 SVS BLK ZOEY 401B
 CITY VIEW ASTEROID 333A
SUNNYSIDE BAILEY 32D
 SUNNYSIDE JEWEL 31B

| |
|--------------|
| Act BW: 93 |
| Adj WW: 649 |
| Adj YW: 1097 |

| | | | | | |
|---------|--------|---------|----------|-----------|---------|
| CE 10.9 | BW 1.5 | WW 67.2 | YW 103.9 | Milk 26.5 | MCE 8.1 |
|---------|--------|---------|----------|-----------|---------|

- 32K is a solid black, moderate framed and well balanced son of SVS Walker 719E.
- SVS Walker 719E is tremendous asset to our herd. He has a great disposition and calves easily while maintaining excellent performance. The dam of 32K is a dark red blazed face cow which consistently produces a quality, marketable calf. We considered keeping this bull back to use in our own heifer pen but decided to offer him for sale.

INNOVATIVE
PRODUCTS
 ENHANCING YOUR NUTRITION
PROGRAM
 MAKING YOU MORE
PROFITABLE

Contact your beef territory manager to learn more:

Jessica Hextall (204)901-3058





Welcome to our 13th annual sale. It's hard to believe how much time flies. This may be our 13th sale but it's been 23 years of selling bulls. After we had our start at Regina Bull sale, 23 years of selling quality herd sires to progressive cattlemen, like you. I'd like to personally thank all of our previous buyers that have entrusted us to provide a quality herd sire to your program.

As we look back at 2022 our local area faced below adequate moisture and poor water quality with no shortage of incredibly hot days. Mother nature's additional pressure made our cows work exceptionally hard to raise this quality bull crop. Looking forward into 2023 we see record calf prices with the huge increase in rail price. One can only hope for adequate moisture and plentiful feed stocks now and the beef industry can prosper!

The group of bulls we've assembled for this year's sale are sure to impress, with nine sons of the A.I. sire SAS Copperhead to lead off the red group. We once again have some powerful sons of the industry leading Tycoon and also some easier calving options that may fit your heifer pen. Our fullblood and black numbers are a bit smaller than previous years but the quality is no less.

Our bulls are once again being developed on a 14% textured ration from Trouw Nutrition along with a percentage of brown oats. There's always quality alfalfa/brome hay in the bale feeder. We pail feed the bulls in what we call the "feed pen", this enables us to put the grain out and walk the bulls in giving them extra handling and attention to maintain a calm disposition. It also gives us the extra exercise we may require! Our Trouw rep Jessica Hextall has been fantastic to work with once again, thanks Jessica.

Our entire cow herd is on the Zoetis whole herd program and the bulls have had Ivomec and Clean Up II.

Tom and Sharon of Sunnyside Simmentals once again have a bull in the sale. It's always enjoyable having those phone conversations with "Uncle Tom" on how the breed has changed over the years. His wisdom and knowledge is in the back of my mind when we make our herd decisions, Thanks Tom.

On the Angus side Brian and Lisa have done an exceptional job assembling their cow herd in a few short years to produce some quality herd bulls. Sarah and the girls of "Gold Bar" are also consigning once again.

The fall show road is always an enjoyable venture for our family, exhibiting and presenting the fruits of our labour is always an enjoyable holiday for us, after all I don't think this body is made for a beach! Thanks again to Johannes and Brody for holding down the fort while we travel. Joe and Aaron have been tremendous supporters as well, whether it's on the show road, picturing and videos or just being there to bounce breeding decisions off of. Thanks Guys.

Once again thanks to Pittman Print Media for designing the catalog for another year.

As always we encourage you to stop by the farm prior to the sale, we'll help you with your bull shopping decisions, no one knows our cows like we do and we're happy to show them all to you. We take great pride in our cow herd and have an open door policy, come take a look!

The catalog will be on Johnstones and DV Auctions website. Follow us on Facebook for updates and videos. We once again welcome everyone for pizza and refreshments Monday night and make sure you come for lunch sale day.

Call us anytime prior to discuss your bull buying needs, or stop in for a tour. Thank you in advance to our previous and new customers, can't wait to catch up on March 21!!

Come for a visit before the sale. Google City View Simmentals for directions

*The Barnetts
Blaine and Tina, Brody & Addison*

RS

SVS TYCOON 841F

CA-PG1235896 / TLAS 841F / Red / Polled / Purebred / Jan 15/18

MRL RED WHISKEY 101B

Act BW: 103

SVS BROOKS 669D

Adj WW: 957

SVS RED SARA 92X

Adj YW: 1594

ACS EVERREADY 970W

SVS RED ANNIE 411B

3D MISS RED NOREMAC 211U

CE 5.8

BW 4.5

WW 107.8

YW 157.4

Milk 32.9

MCE 6.2



Daughter of Tycoon



Daughter of Tycoon



RS

18

CITYVIEW KATCHER 294K

CA-BPG1389300 / CVBB 294K / Hetero Black / Homo Polled / Purebred / Non Dilutor / Jan 29/22

SVS BROOKS 669D

Act BW: 99

SVS TYCOON 841F

Adj WW: 636

SVS RED ANNIE 411B

Adj YW: 1071

HARVIE BOONDOK 12Z

CITY VIEW 127T RAVEN 566C

3D MISS BLK RAVEN 127T

CE 6.3

BW 4

WW 82.1

YW 112.9

Milk 32.7

MCE 4.3



Dam of Lot 18



Brother of Lot 18



LOT 18

- A hetero black, homo polled, non dilutor bull with a balanced set of EPDs
- We don't have a lot of black bulls this year but this one is very good!
- His dam is a full sister to the dam of lot 19 - maternal brothers sold to Brad Christopherson, Mark & Susan Lenz and a sister to Rosehill Simmentals who did some winning for them

19

CITYVIEW KOON 287K

CA-PG1389227 / CVBB 287K / Red / Homo Polled / Purebred / Jan 28/22 / Non Dilutor

SVS BROOKS 669D

Act BW: 100

SVS TYCOON 841F

Adj WW: 690

SVS RED ANNIE 411B

Adj YW: 1223

HARVIE BOONDOK 12Z

CITY VIEW 127T RAVEN 477B

3D MISS BLK RAVEN 127T

CE 5.4

BW 5

WW 92.9

YW 130.1

Milk 32.7

MCE 1.3

Granddam of
Lot 18 & 19Grandsire of
Lot 18 & 19

LOT 19

- A heavy pay weight kind of bull that is homo polled, non dilutor
- Maternal brothers have sold to Jake Carrobourg, K G McLaren Farms and Rafter C Ranch
- His grandmother is the great 127T cow who did an outstanding job for us with 12 registered progeny

Lot 20

- A homo polled, non dilutor son of the great breeding bull, Tycoon, who has worked so well for us
- A big time power and performance bull topping the breed for weaning and yearling EPD
- His mother is a nice young cow that came through the Red & Black sale



20

CITYVIEW KIPPER 249K

CA-PG1388123 / CVBB 249K / Red / Homo Polled / Purebred /
Non Dilutor / Jan 16/22

SVS BROOKS 669D

SVS TYCOON 841F

SVS RED ANNIE 411B

TYMARC DIGGER 416D

OH KAY RED GEM 40G

OH KAY SIERRA 103Y

Act BW: 102

Adj WW: 668

Adj YW: 1305

CE 6.3 BW 4.8 WW 100.2 YW 154.8 Milk 31.8 MCE 7.1

21

CITYVIEW KANE 268K

CA-PTG1389275 / CVBB 268K / Red / Homo Polled / Purebred / Feb 22/22

SVS BROOKS 669D

SVS TYCOON 841F

SVS RED ANNIE 411B

LFE BS LEWIS 803C

OUTLAW MISTRESS 830F

OUTLAW MISTRESS 54B

Act BW: 100

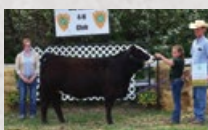
Adj WW: 831

Adj YW: 1333

CE 7.5 BW 4.7 WW 92.5 YW 138.7 Milk 31.5 MCE 4.6

Lot 21

- An impressive homo polled Tycoon son off a beautiful mother – she has the best bull calf on the ground this winter
- Thick and solid in his makeup out of Brody and Addison's growing program
- Top 5% for weaning and top 10% yearling



Dam of Lot 21



Granddam of Lot 22



Sire of Lot 22

22

CITYVIEW KAHLUA 215K

CA-BPG1387719 / CVBB 215K / Homo Black / Homo Polled / Purebred / Jan 7/22

REMINGTON LOCK N LOAD 54U

TJSC BOONE PICKENS 46C

TJSC KNOCKOUT 121Y

MRC BROKER 6Z

CITY VIEW RIGHT 6E

CITY VIEW 12X RIGHT 408B

Act BW: 83

Adj WW: 716

Adj YW: 1113

CE 12.1 BW 1 WW 62.4 YW 102.9 Milk 26.6 MCE 4.3

- Kahlua was part of our 2022 show string – puppy dog quiet
- An ideal option for breeding heifers ranking in the top 10% for calving ease and birth weight.
- Homo polled and homo black with a small head, ideal structure and smooth shoulder
- Traces back to our 12X donor cow who created a great legacy in her cow family here

Thank You!



Thank you to Beechinor Bros for purchasing CITYVIEW KHLOE 276K from Friday Night Lights



Thank you to Pine Creek Simmentals for purchasing ULTRA/CITYVIEW HELEN 7K from Friday Night Lights



Thank you to High Country Cattle for purchasing CITYVIEW JOSIE 83J from Friday Night Lights



Thank you to Scott Land & Cattle for purchasing CITYVIEW UNIQUE 13J from Ultimate Red & Black



Thank you to Scott Land & Cattle for purchasing CITYVIEW JASMINE 53J from Ultimate Red & Black



Congratulations to Hawkin Mader on his success with CITYVIEW JEWEL 66J who was purchased from Friday Night Lights in 2021

23

CITYVIEW KADE 208K

CA-PG1387712 / CVBB 208K / Red / Homo Polled / Purebred / Jan 2/22

W/C LOADED UP 79C

Act BW: 92

BLACK GOLD APPROVAL 71E

Adj WW: 652

RF CERTAINLY FLIRTIN 532C

Adj YW: 1199

HARVIE RED SUMMIT 54B

CITYVIEW DEMI 29H

CITY VIEW DEMI 69F

CE 11.9 BW 2.2 WW 80.9 YW 124.4 Milk 24.3 MCE 6.6



Sire of Lot 23



LOT 23

- A homo polled bull that is dark red, long bodied with a strong top and moderate birth weight
- Top 15% for calving ease and raised by a 2 year old mother cow off Summit
- His sire, Approval, has worked well on heifers

24

CITYVIEW KINGSTON 258KCA-PG1389261 / CVJB 258K / Red / Homo Polled / Purebred /
Dilutor Free / Jan 20/22

CITY VIEW DAMASCUS 605D

Act BW: 83

TJT2F SUNNYSIDE 2F

Adj WW: 622

ERIXON LADY 2C

Adj YW: 1096

LCHMN BODYBUILDER 7303F

CITY VIEW UNIQUE 66E

CITY VIEW TEAR JERKER 18T

CE 12.1 BW 1.1 WW 65.2 YW 91.5 Milk 30.9 MCE 6.3



Sire of Lot 24



Granddam of Lot 24



LOT 24

- A homo polled, dilutor free bull that is a candidate for breeding heifers – top 10% for calving ease and top 15% for birth weight
- Long, smooth made and small skull with just an 83 pound start up out of a mature cow
- Goes back to the Unique cow family that left great females including his granddam 18T who was a real favourite

RS

SAS COPPERHEAD G354

CA-PG1325462 / RJY 354G / Red / Polled / Purebred / Feb 10/19

NCB COBRA 47Y

Act BW:

ERIXON BITTEN 203A

Adj WW:

BMD MISS BLK ICE DANCER

Adj YW:

R PLUS RELOAD 2006Z

SAS MISS ARAPHAOE B354

SAS STARLIGHT Z354

CE 1.3 BW 5 WW 110.9 YW 160 Milk 24.8 MCE -0.1



RS

CITYVIEW KNOX 202K

CA-PG1387704 / CVBB 202K / Red / Homo Polled / Purebred /
Dilutor Free / Jan 1/22

ERIXON BITTEN 203A

SAS COPPERHEAD G354

SAS MISS ARAPHAOE B354

BLACKGOLD MIND GAME 129C

CITY VIEW SUNNY 4E

SUNNYSIDE 641B

Act BW: 97

Adj WW: 673

Adj YW: 1187

CE 6.6 BW 3.5 WW 93.8 YW 140 Milk 28.7 MCE 4.5



Dam of Lot 25



Brother of Lot 25



LOT 25

- One of Blaine's top picks in the pen – liver red with a great foot, homo polled and dilutor free
- Top 5% for both weaning and yearling values
- Maternal sister sold to Dunmac Farms in Ontario through the Agribition sale and a brother to LF Johnstone Farm

CITYVIEW KRAMER 312K

CA-PG1390584 / CVJB 312K / Red / Homo Polled / Purebred /
Dilutor Free / Feb 8/22

ERIXON BITTEN 203A

SAS COPPERHEAD G354

SAS MISS ARAPHAOE B354

KWA ROCK 36B

CITY VIEW TARA 663D

CITY VIEW 15Y TARA 429B

Act BW: 98

Adj WW: 785

Adj YW: 1281

CE 5.6 BW 3.9 WW 104.8 YW 152.4 Milk 32.1 MCE 2.9



Brother of Lot 26



Brother of Lot 26



LOT 26

- Homo polled and dilutor free bull backed by a mother cow with a picture perfect udder
- Top 1% for weaning, yearling and maternal weaning weight
- Maternal brothers sold to Jason Lasota and Todd Esmond, 312K's daughters will be exceptional cows

CITYVIEW KING 220K

CA-PG1387726 / CVBB 220K / Red / Polled / Purebred / Dilutor Free / Jan 8/22

ERIXON BITTEN 203A

SAS COPPERHEAD G354

SAS MISS ARAPHAOE B354

MRL 91Y

MORE'S MS AVA 309A

MORE'S SPLISH SPLASH 610S

Act BW: 108

Adj WW: 692

Adj YW: 1199

CE 3.8 BW 5.6 WW 94.5 YW 130.4 Milk 33 MCE 4.6



Brother of Lot 27



Brother of Lot 27



LOT 27

- A long bodied, quiet disposition bull that is polled and dilutor free
- Top 3% for weaning weight
- Raised by a no miss mother cow - maternal brothers to Excel Grazing and the Hipperts as well as daughters working here including the dam of lot 44

Lot 28

- A long bodied, blaze faced bull that is homo polled and dilutor free
- Power bull – top 2% for weaning WT, top 3% for yearling WT
- Maternal brothers working for Ashley Patoine and Bar KM Cattle as well as sisters in our herd



Sister of Lot 28



Dam of Lot 28



28

CITYVIEW DUTTON 209K

CA-PG1387713 / CVBB 209K / Red / Homo Polled / Purebred / Dilutor Free / Jan 2/22

ERIXON BITTEN 203A

SAS COPPERHEAD G354

SAS MISS ARAPHAOE B354

WINCHESTER HR P8315

CITY VIEW 34Y KORA 336A

CITY VIEW YLANG YLANG 34Y

Act BW: 96

Adj WW: 682

Adj YW: 1316

CE 6.4 BW 3.5 WW 97.1 YW 142.8 Milk 28.6 MCE 1.2

29

CITYVIEW ASSASSIN 242K

CA-PG1388112 / CVBB 242K / Red / Polled / Purebred / Dilutor Free / Jan 14/22

ERIXON BITTEN 203A

SAS COPPERHEAD G354

SAS MISS ARAPHAOE B354

MRC BROKER 6Z

CITY VIEW KORA 519C

CITY VIEW WIFEMATERIAL 1W

Act BW: 100

Adj WW: 684

Adj YW: 1223

CE 1.3 BW 6.2 WW 99.6 YW 149.1 Milk 26.2 MCE -1.2

Lot 29

- Deep sided power bull - top 1% for weaning and top 2% for yearling, polled and dilutor free
- Moderate framed bull that is deep red with a blaze face, dark hoof and great disposition
- Dam comes from the Kora cow family and back to herd bulls Ishee and Broker



Grandsire of Lot 22 & 29





REFERENCE DAM

Full Sister to
lots 30 to 33Granddaughter of
Young Victoria 7Y

Son of Young Victoria 7Y



Son of Young Victoria 7Y



Son of Young Victoria 7Y



Son of Young Victoria 7Y

Lots 30-33

This is an exciting group of ET brothers off the Copperhead bull and out of our Young Victoria 7Y donor. They are stout muscled, good haired and dark red and all dilutor free. The 7Y cow is truly an ideal female who earned her way to the top of our program based on her exceptional production. A full sister to these bulls sold at Friday Night Lights in December to the industry leading program at Beechinor Brothers. This year will make 12 sons of 7Y that have sold through our bull sale! Tremendous programs like Bar Double M Angus, the McLarens, Rick and Bonnie Clubbe, Beryl and Wendell Campbell, Glen Ritter and the Camphaugs have successfully used sons of 7Y. Four of those have been part of the show string including a bull named Bubba Gump – ask 'Auntie Beryl' Campbell about him! If you needed a group of bulls to run together this is an awesome opportunity to add consistency to your calf crop. And their daughters will be truly awesome mother cows just grandma!



LOT 30

30

CITYVIEW KALVIN 257K

CA-PTG1389255 / CVBB 257K / Red / Polled / Purebred / Jan 20/22

ERIXON BITTEN 203A

Act BW: 100 ET

SAS COPPERHEAD G354

Adj WW: 579

SAS MISS ARAPHAOE B354

Adj YW: 1101

CMS UNIVERSE 838U

CITYVIEW YOUNGVICTORIA 7Y

CITY VIEW WIFEMATERIAL 1W

CE 2.7 BW 5.8 WW 87.9 YW 120.3 Milk 28.7 MCE 1



LOT 31

31

CITYVIEW KODY 267K

CA-PTG1389257 / CVBB 267K / Red / Polled / Purebred / Jan 22/22

ERIXON BITTEN 203A

Act BW: 100 ET

SAS COPPERHEAD G354

Adj WW: 676

SAS MISS ARAPHAOE B354

Adj YW: 1190

CMS UNIVERSE 838U

CITYVIEW YOUNGVICTORIA 7Y

CITY VIEW WIFEMATERIAL 1W

CE 2 BW 6.3 WW 94.8 YW 130.6 Milk 28.7 MCE 0.4

32

CITYVIEW KRACKER 271K

CA-PTG1389258 / CVBB 271K / Red / Scurred / Purebred / Jan 23/22

ERIXON BITTEN 203A

Act BW: 104 ET

SAS COPPERHEAD G354

Adj WW: 620

SAS MISS ARAPHAOE B354

Adj YW: 1332

CMS UNIVERSE 838U

CITYVIEW YOUNGVICTORIA 7Y

CITY VIEW WIFEMATERIAL 1W

CE -0.5 BW 7.1 WW 96.2 YW 139.5 Milk 28.7 MCE -1.5



LOT 32

33

CITYVIEW KOLTON 291K

CA-STG1389260 / CVBB 291K / Red / Scurred / Purebred / Jan 29/22

ERIXON BITTEN 203A

Act BW: 107 ET

SAS COPPERHEAD G354

Adj WW: 705

SAS MISS ARAPHAOE B354

Adj YW: 1142

CMS UNIVERSE 838U

CITYVIEW YOUNGVICTORIA 7Y

CITY VIEW WIFEMATERIAL 1W

CE 4.4 BW 6.4 WW 92.4 YW 131.2 Milk 28.7 MCE 1.9



LOT 33

34

CITYVIEW KOLDEN 317KUNR1390613 / CVBB 317K / Red / Homo Polled / Purebred /
Dilutor Free / Feb 9/22

SVS TYCOON 841F

Act BW: 104

CITYVIEW HOLDEN 11H

Adj WW: 782

CITY VIEW BOSS LADY 23E

Adj YW: 1185

CMS UNIVERSE 838U

CITYVIEW YOUNGVICTORIA 7Y

CITY VIEW WIFEMATERIAL 1W

CE 5.3 BW 5.2 WW 95.7 YW 134.4 Milk 29.9 MCE 3.4



Sire of Lot 34



LOT 34

- The natural son of donor 7Y and our only son of Holden – a past feature we kept semen on
- Homo polled, dilutor free and as dark as they come in a moderate frame with a great disposition
- This is an impressive pedigree that will add pay weight and a stellar set of replacement females

35

CITYVIEW KRUZ 313K

CA-P1390607 / CVBB 313K / Red / Polled / Fullblood / Feb 8/22

ANCHOR D VIPER 103W
CITYVIEW GOLD TRIGGER 76H
ANCHOR D / CD KALISTA 263F
FGAF FRENCH ATTACK 010C
IPU 29B MS FRENCH ATTACK 44F
LAKEVIEW MS ECLEC 29B PFF

Act BW: 94
Adj WW: 653
Adj YW: 1136

CE 8.3 BW 3.4 WW 75.1 YW 107.4 Milk 35.9 MCE 3.3



- Gold Trigger is the highest selling bull we've created at \$35000 to Boisvert Simmental in Quebec
- The natural calf off our French Attack donor, maternal brother to lots 37 and 38 as well as a sister to Labatte Simmentals
- Dark red, long bodied with a great foot

36

CITYVIEW KENNY 222K

CA-P1387729 / CVBB 222K / Red / Polled / Fullblood / Jan 8/22

DOUBLE BAR D MAESTRO 100S
ANCHOR D VIPER 103W
PRL LOPEZ 147L
BLACK GOLD EPIC 14Z
ANCHOR D / CD KALISTA 263F
ANCHOR D KAEL 255C

Act BW: 93
Adj WW: 615
Adj YW: 1090

CE 7.5 BW 3 WW 68 YW 104.1 Milk 37 MCE 5.7



- A full brother to Gold Trigger – our high seller from 2 years ago who is breeding very well
- Maternal brothers are working for Trevor Benson, Marc Boisvert and our toughest customer, Cliff Barnett
- His dam was a feature female at the illustrious Friday Night Lights event



Dam of Lot 36, Granddam of Lot 35



Granddam of Lot 36



Sire of Lot 35, Full Brother to Lot 36

37

CITYVIEW KLONDIKE 298K

CA-PT1389334 / CVBB 298K / Red / Polled / Fullblood / Jan 30/22

DOUBLE BAR D MAESTRO 100S

Act BW: 102 ET

ANCHOR D VIPER 103W

Adj WW: 597

PRL LOPEZ 147L

Adj YW: 1111

FGAF FRENCH ATTACK 010C

IPU 29B MS FRENCH ATTACK 44F

LAKEVIEW MS ECLEC 29B PFF

CE 5.1

BW 2.7

WW 64.4

YW 94.5

Milk 35.5

MCE 1.7



38

CITYVIEW KOOL DUDE 279K

CA-PT1389296 / CVBB 279K / Red / Polled / Fullblood / Jan 25/22

DOUBLE BAR D MAESTRO 100S

Act BW: 106 ET

ANCHOR D VIPER 103W

Adj WW: 655

PRL LOPEZ 147L

Adj YW: 1081

FGAF FRENCH ATTACK 010C

IPU 29B MS FRENCH ATTACK 44F

LAKEVIEW MS ECLEC 29B PFF

CE 6.6

BW 2

WW 64.3

YW 93.1

Milk 35.5

MCE 2.5

**Lots 37, 38**

This is certainly a high quality pair of polled brothers out of our French Attack donor cow from Labatte's – a program we have such huge respect for. They are sired by well known Anchor D Viper who made a well-deserved name for himself over the years. A maternal sister sold to Labatte's from the Fleck Equation Sale and maternal brothers have sold here to K G McLaren Farms, L-Dee Farms and Hawkin Brothers Land & Cattle. They've got tons of volume, the attractive pigment that is in such demand and they're both dilutor free giving them even more breeding potential.



Sire of Lots 36, 37 & 38



Dam of Lots 35, 37 & 38



Sister of Lots 35, 37 & 38

RS

MRL SLEEP EASY 140D

CA-PTG1185784 / MRL 140D / Red / Polled / Purebred / Jan 30/16

KUNTZ MARSHALL 12Y
KUNTZ SHERIFF 8A
 PEACOCK'S LI'L NETTIE 23Y
 MRL BLACK BEAR 79S
MRL MISS 836W
 MRL MISS 828S

Act BW: 82

Adj WW:

Adj YW:

CE 8.8 BW 1.4 WW 83.6 YW 126.9 Milk 22.3 MCE 4.7

*Sire of Sleep Easy*

RS

39

CITYVIEW KYLE 250K

CA-PG1388124 / CVJB 250K / Red / Homo Polled / Purebred / Dilutor Free / Jan 17/22

KUNTZ SHERIFF 8A
MRL SLEEP EASY 140D
 MRL MISS 836W
 BERTS DAKOTA 7D
CITYVIEW UNIQUE 72G
 CITYVIEW UNIQUE 620D

Act BW: 93

Adj WW: 759

Adj YW: 1199

CE 6.5 BW 3.7 WW 91.2 YW 135.2 Milk 30.8 MCE 1.5

*G. Granddam of Lot 39*

LOT 39

- A homo polled, dilutor free bull with a baldie face and great disposition in the top 10% for weaning and yearling
- We lost his dam when he was 3 weeks old and he was fostered onto another cow and still kept up
- His grandmother is the dam of our lead off bull last year to Luv-In-It Cattle Co.

40

CITYVIEW KANGAROO 266K

CA-PG1388322 / CVJB 266K / Red / Homo Polled / Purebred / Jan 22/22

KUNTZ SHERIFF 8A
MRL SLEEP EASY 140D
 MRL MISS 836W
 BERTS DAKOTA 7D
CITYVIEW TARA 122H
 CITYVIEW TARA 640D

Act BW: 80

Adj WW: 605

Adj YW: 1125

CE 10 BW 1.4 WW 74.5 YW 113.9 Milk 28.1 MCE 5.4

LOT 40

- A homo polled bull with potential for the heifer pen – just an 80lb birthweight, top 25% for calving ease and top 15% for birth
- Smooth shouldered, long bodied and lots of extension
- His grandmother is a full fleck cow from the same Tara cow family as lot 42

41

CITYVIEW KAIDENCE 310K

CA-PG1390579 / CVJB 310K / Red / Homo Polled / Purebred / Feb 7/22

KUNTZ SHERIFF 8A

Act BW: 103

MRL SLEEP EASY 140D

Adj WW: 659

MRL MISS 836W

Adj YW: 1155

HARVIE BOONDOCK 12Z

CITY VIEW BOSS LADY 639D

CITY VIEW WEDGEWOOD 9W

CE 5.2 BW 4.6 WW 83.2 YW 122.2 Milk 27.2 MCE 2.5



Granddam of Lot 41



Grandsire of Lot 41



LOT 41

- A long bodied, lighter red, homo polled bull backed by the Boss Lady cow family
- His grandmother, 9W, is a past donor for us. Lots of maternal strength in the pedigree
- Moderate framed and very balanced from end to end

42

CITYVIEW KORBIN 204KCA-PG1387707 / CVJB 204K / Red / Homo Polled / Purebred /
Dilutor Free / Jan 1/22

KUNTZ SHERIFF 8A

Act BW: 86

MRL SLEEP EASY 140D

Adj WW: 674

MRL MISS 836W

Adj YW: 1215

BERTS DAKOTA 7D

CITY VIEW TARA 124F

CITY VIEW 15Y TARA 429B

CE 9.6 BW 2 WW 87.4 YW 132.3 Milk 29.4 MCE 5



Sire of Lot 43

Grandsire of Lots 39, 40, 42



LOT 42

- A homo polled, dilutor free bull with a balanced, above average EPD profile
- A lighter coloured bull with a light birth weight
- The bottom side of his pedigree is a quarter fleckvieh and the same cow family as the dam of lot 40

43

CITYVIEW KERNEL 331K

CA-PG1389325 / CVBB 331K / Red / Polled / Purebred / Dilutor Free / Feb 22/22

ERIXON REVELSTOCK 41A

Act BW: 88

BERTS DAKOTA 7D

Adj WW: 680

SWAN LAKE NOREMAC 75Y

Adj YW: 1235

NCB COBRA 47Y

CITY VIEW AVA 18G

CITY VIEW AVA 30E

CE 9.5 BW 3 WW 79.3 YW 118.3 Milk 34 MCE 5.5



Grandsire of Lot 43



LOT 43

- The only son of walking herd bull, Bert's Dakota, whose daughters raised lots 39, 40 and 42
- Polled and dilutor free with an impressive EPD set, a bull that is far better than his picture
- Same cow family as lots 27 and 44, we have a maternal sister working here

RS

OUTLAW TIDAL WAVE 954G

CA-PG1290123 / BMD 954G / Red / Polled / Purebred / Feb 10/19

CDI RIMROCK 325Z

Act BW: 88

STF CRIMSON TIDE DZ87

Adj WW: 771

STF MISS ZW87

Adj YW: 1469

CMS/BMD PAPARAZZI 205Z

CROSSROAD BOBARINA 633B

CROSSROAD YODINA 352Y

CE 7.4 BW 2.3 WW 80.9 YW 118.3 Milk 22.2 MCE 3.3



Sire of Tidal Wave

RS



44

CITYVIEW WAKE 225KCA-PG1387732 / CVBB 225K / Red / Homo Polled / Purebred /
Dilutor Free / Jan 8/22

STF CRIMSON TIDE DZ87

Act BW: 94

OUTLAW TIDAL WAVE 954G

Adj WW: 670

CROSSROAD BOBARINA 633B

Adj YW: 1216

SVS TYCOON 841F

CITYVIEW MS AVA 50H

MORE'S MS AVA 309A

CE 7.5 BW 4.1 WW 89.3 YW 132 Milk 29.9 MCE 6.3

Grandsire of Lot 44,
Sire of Lots 18 to 21

LOT 44



- A moderate framed bull that is homo polled and dilutor free
- His mother is a Tycoon daughter with a bright future and his grandmother raised lot 27
- Top 10% for weaning and top 15% for yearling

45

CITYVIEW KRANK 245K

CA-PG1389235 / CVBB 245K / Red / Homo Polled / Purebred / Jan 14/22

STF CRIMSON TIDE DZ87

Act BW: 97

OUTLAW TIDAL WAVE 954G

Adj WW: 636

CROSSROAD BOBARINA 633B

Adj YW: 1132

HARVIE RED SUMMIT 54B

CITYVIEW HAZEL 33H

CITY VIEW DOROTHY 86F

CE 6.6 BW 4.1 WW 83.7 YW 124.4 Milk 21 MCE 3.4



Dam of Lot 45



Grandsire of Lot 45

LOT 45



- A homo polled bull raised by a hard working two year old cow
- Smaller framed bull that is extremely deep bodied and stout
- Ranks in the top 20% for weaning and yearling weight with a little different pedigree

What Do The Numbers Mean?

Calving Ease (CE) - The ease with which a bull's calves are born to first calf heifers. The larger EPD indicates a higher percentage of unassisted births for calves sired by that bull.

Birth Weight (BW) - Calf weight at birth adjusted to the dam's age. The larger EPD indicates a heavier average birth weight.

Weaning Weight (WW) - Weight taken between 160 and 250 days of age and adjusted to 205 days of age and to the dam's age. The larger EPD indicates a heavier average weaning weight for calves sired by that bull.

Yearling Weight (YW) - Weight taken between 330 and 440 days of age and adjusted to 365 days of age and to the dam's age. The larger EPD indicates a heavier average yearling weight for calves sired by that bull.

Maternal Calving Ease (MCE) - The ease a bull's daughters calve as first calf heifers. The larger EPD indicates a higher percentage of unassisted births for calves born to the sire's daughters.

Milk - The milk EPD is a predictor of a sire's genetic merit for milk as expressed in his daughters production, or in other words, the part of weaning weight attributed to milk genes. The larger EPD indicates heavier average weaning weights due to daughter's greater maternal ability.

Total Maternal (TM) - A bull's ability to pass on milk production and growth rate through his daughters. It predicts the total weaning (direct and maternal) that will be displayed in his daughter's offspring. It is calculated by adding half of the Weaning Weight EPD with the Milk EPD. The larger EPD indicates higher pounds at weaning.

2023 Simmental Breed Averages - CE 7.9 BW 3.4 WW 78.4 YW 116.1 Milk 26.3 MCE 4.3

2023 Angus Breed Averages - BW 2 WW 52 YW 92 Milk 23 CE 3.5 MCE 6.7

Win a \$2000 Sale Credit

Purchase a bull from any current Saskatchewan Simmental member and when the registration papers are transferred, you are entered to win a \$2000 sale credit! The draw will be made at the SSA Annual general meeting in July and the lucky winner will have one year to use the credit at public auction or private sale on bulls or females from any current Saskatchewan member.

The Scurred Gene

What are scurs?

Scurs are a small amount of horn tissue on a polled animal. They are not connected to the skull and range from a small scab to a couple inches long. Most often they are not visible until an animal's head is clipped.


How does having scurs affect an animal?

Since scurs are small and not attached to the skull they will not cause harm to other animals. Because most scurs aren't noticeable until an animal's head is clipped they are not docked at auction. Scurs are cosmetic and typically go unnoticed on most animals.

Scurred vs Polled vs Horned

A bull with scurs is still actually polled since the genes are different. A scurred bull bred to horned females will still result in 50% polled offspring. A scurred bull bred to polled females will have a higher likelihood of polled offspring. Both matings may produce offspring with scurs.





City View Simmentals
Box 1494
Moose Jaw, SK
S6H 7A8

If you would like to be removed from the mailing list
please email cityviewsimmentals@sasktel.net

CITY VIEW SIMMENTALS & ABOUND LIVESTOCK

13th Annual Bull Sale