

CITY VIEW SIMMENTALS & IVANHOE ANGUS

with **ABOUND LIVESTOCK & SUNNYSIDE SIMMENTALS**

10TH ANNUAL BULL SALE

**TUESDAY, MARCH 24, 2020
JOHNSTONE AUCTION
MOOSE JAW, SK
1:00 p.m.**

Welcome to our 10th Annual Sale! We've been selling bulls for the better part of 20 years and have learned a lot but one thing has remained the same; our commitment to producing cattle that are right for the times. A few key beliefs we operate with on a daily basis are the value of time tested genetics and the foundation of our mother cows. Time and time again, this industry has proven that consistency is key. We are very proud of the consistency bulls purchased through our offering have provided to their new owners.

One of things that has always made this sale work is the shared vision of our sale group. You won't find better people to work with than Ron & Marilyn at Ivanhoe Angus and Tom & Sharon at Sunnyside Simmentals. Brian & Lisa continue to build a great cowherd at Abound Livestock and we have no doubt you will be impressed by their Angus bulls.

Top quality groups of Simmental and Angus replacement heifers from the Clubbe, Abound and Barnett programs will also be available. These are outstanding, pasture ready females and we strongly believe they'd be a great addition to any program.

As always, we feed bulls with longevity in mind on a high forage diet and present them to you in their working gear. The hope is they remain able to develop and grow in the coming years. After weaning, our bulls have as much space to roam as you'll find in the purebred industry. This helps keep the bulls athletic and sound for breeding. They come to you ready to work rather than melt down.

In closing, we leave you with a thought we've shared before. It says, 'The bulls you buy this year will give you their first calves in 2021. His first daughters will calve in 2023 and, if all goes well, you will continue to have calves from him until 2026 or longer. This means in 2036, your 10 year old cows could still be out of the bull you buy this year and many of your young and middle aged cows will be his descendants. Short term decisions do not exist in this business. Find the best bulls you can afford from a trusted, professional source who makes their living the same way you do.'

We hope to be that trusted, professional source for you and appreciate any opportunity to visit with you about your bull needs.

Our Facebook page will have updates and videos as we get closer to the sale. We look forward to seeing you at Johnstone's on March 24 at 11:30 for one of the best bull sale lunches in the country. We encourage you to get in touch beforehand if you have any questions or if you'd like to tour at the farm. The bulls will be at the mart starting March 22.

The Barnett Family



Blaine & Tina

306 691 3747 or 306 631 6618

Joe & Aaron 403 465 2805 or 403 485 5518

Brian & Lisa 306 631 7539



Ron & I enter into this new decade looking very forward to our 10th Annual Bull Sale. Ivanhoe Angus has enjoyed working with all the wonderful people that have made the City View Simmentals, Ivanhoe Angus, Sunnyside Simmental & Abound Livestock Sale possible.

There is an old saying, "The More Things Change, the More they Stay the Same." This past summer, a life-long goal was achieved. The Ivanhoe Angus herd was pictured on the fifth generation valley pasture.

Ron & I, like the generations before us, are still producing cattle that provide us with a great life. Our mission hasn't changed, we still enjoy raising the type of angus cattle that we have raised for thirty seven years.



The bulls are being developed on the same Masterfeeds ration. The 2 two-year old bulls were developed on pasture this past summer and they will be semen tested before the sale. The yearling bulls will be vet inspected before the sale and can return to the farm where they will continue to be developed then they will be semen tested and delivered in the Spring.

Thanks again to all of our customers, we appreciate your support and interest in our breeding program. Please accept this as our invitation to join us on March 24th at Johnstone's. Come early, view the bulls and join us for lunch.

Ron and Marilyn Mountenay

Ron & Marilyn

306 345 2560

Marilyn 306 631 4743

Ron 306 630 5871

City View Simmentals and Ivanhoe Angus 10th Annual Bull Sale with Sunnyside Simmentals & Abound Livestock

Tuesday, March 24, 2020 - 1:00 pm

On Offer:

26 Angus and 36 Simmental bulls
with Open Replacement Heifers

Johnstone Auction Mart

4 miles west of Moose Jaw on #1 Highway

Monday - 5:00 pm View the bulls, enjoy refreshments and pizza

Tuesday - Lunch at 11:30am and sale at 1:00 p.m.

Auctioneer:

Scott Johnstone306 693 4715 (business)
306 631 0767 (cell)

Sale Staff:

Nate Marin306 869 7130 (cell)
Don Oberg780 678 6926 (cell)
Sarah Buchanan.....306 681 5340 (cell)

Sale Day Phones:

Blaine Barnett - 306 631 6618
Tina Barnett - 306 631 5183
Joe Barnett - 403 465 2805
Brian Barnett - 306 631 7539
Aaron Birch - 403 485 5518

Ron Mountenay - 306 630 5871
Marilyn Mountenay - 306 631 4743
Richard Rieder - 306 478 7766
Colin Toner - 306 951 7502
Tom Turnbull - 306 527 6624



Visit www.DVAuction.com
and register to bid early!
Videos will also be available
there.

Insurance

We strongly recommend insuring your purchases sale day. See Larry Toner of Stockman's Insurance at the sale. 306 834 7652

Delivery and Trucking Options

Option A: (Simmental and 2 year old bulls) Bring your trailer sale day and we'll deduct \$100.00 per bull from the purchase price.

Option B: Bulls will be delivered free of charge up to 300 Km from Moose Jaw at the seller's convenience as soon as possible following the sale. Other destinations can be arranged between the buyer and seller.

Option C: (Angus) Bulls return home with seller free of charge. Arrangements with Ivanhoe Angus and Abound Livestock can be made once bulls are semen tested. Buyers choosing this option are encouraged to insure their purchase.

Option C: (Simmental) Bulls can return to the farm until Apr. 15, 2020. It is the buyer's responsibility to pick the bull up from seller's farm on or before Apr. 15/20. Buyers choosing this option must insure their purchase.

Give us a call if you have any questions regarding our trucking options.

Terms and Conditions

All cattle sell according to the terms and conditions set out by the Canadian Angus and Simmental Associations.



City View Simmentals

The Barnett Family

306 691 3747

**Reference
Sire**

BGS/BM CAPTAIN SCREAM 63D

CLNO 63D ~ January 27, 2016 ~ Homo Polled



Captain Scream has continued his dominance in the Simmental breed as his progeny continually find their way to the top. We first saw him in Lloydminster as a calf when the Noble family campaigned him. Although we already had the Broker influence in our herd, we knew he was one we could not pass up and were among the original group to purchase a semen pack. He became a 5 time qualifier for the Beef Supreme Challenge before his untimely passing made his genetics a hot commodity with semen trading for upward of \$500 a dose. His calves are simply exciting! These sons along with an elite group of daughters certainly make us very glad we made the initial investment. His first daughters freshened this spring with beautiful udders. A daughter topped Transcon's Red & Black for us in December at \$11500. Take a close look at this group of flush mates ~ they are outstanding!

HARVIE JDF WALLBANGER 111X
SIRE: SVS CAPTAIN MORGAN 11Z
SUNNYVALLEY BLK JENNA 88U

MR HOC BROKER
Dam: RF SCREAM 215Z
RF SCREAM 39X

Act BW 106 Adj WW 948 Adj YW 1500

CE 1.4 BW 6.7 WW 94.4 YW 140.5 MK 14 MCE 1.4



RF SCREAM 215Z
Dam of Captain Scream



CITY VIEW MOSIE 6F
\$7000 Captain Scream daughter

**Reference
Dam**

CITY VIEW YOUNG VICTORIA 7Y

CVBB 7Y ~ January 2, 2011 ~ Homo Polled



City View Young Victoria 7Y is a model female no matter what breed she is. She combines all the attributes we want in our cowherd from her ideal foot and udder design and her easy doing nature to her high quality and consistent production record. Her pedigree combines 838 and Ishee with a shot of fleckvieh genetics on the bottom side. She continually put high selling bulls through our offering with purchases by Glen Ritter, Kevin McLaren, Beryl & Wendell Campbell, and Mike & Leslie Camphaug. We don't do a lot of embryo work but we truly believe 7Y was a deserving candidate to be flushed. We felt Captain Scream was the ideal combination for her so we used our final doses of semen to create this mating. 6 calves resulted and each one is tremendous! Like fine wine, Young Victoria just keeps getting better and her impact on our program will be felt for years to come.

TNT TOP GUN R244
SIRE: CMS UNIVERSE 838U
CMS RASPBERRY 27R

MR ISHEE UNIQUE 634
Dam: CITY VIEW WIFE MATERIAL 1W
CITY VIEW'S PRINCESS 3M

Act BW 90 Adj WW 636

CE 3 BW 5 WW 71.4 YW 103.5 MK 24.7 MCE -0.2



CITY VIEW DIESEL 694D
Son of 7Y



CITY VIEW COBALT 547C
Son of 7Y

1

Homo Polled ~ Non-Dilutor
CITY VIEW GREAT GUNS 68G
 CVBB 68G January 26, 2019



Act BW 102 (ET) Adj WW 844 Adj YW 1426
 CE 2.8 BW 5.5 WW 82.1 YW 119.5 MK 12.3 MCE 0.5

2

Homo Polled
CITY VIEW GUINNESS 71G
 CVBB 71G January 26, 2019



Act BW 105 (ET) Adj WW 654 Adj YW 1273
 CE 2.3 BW 5.5 WW 82.1 YW 121.7 MK 20.2 MCE 0.1

3

Homo Polled
CITY VIEW GALAXY 81G
 CVBB 81G January 30, 2019



Act BW 102 (ET) Adj WW 717 Adj YW 1336
 CE 2.3 BW 5.5 WW 82.1 YW 121.7 MK 20.2 MCE 0.1

4

Homo Polled
CITY VIEW GATSBY 88G
 CVBB 88G February 1, 2019



Act BW 103 (ET) Adj WW 708 Adj YW 1356
 CE 2.3 BW 5.5 WW 82.1 YW 121.7 MK 20.2 MCE 0.1

Lots 1-4 are ET siblings from the mating of Young Victoria 7Y and Captain Scream along with 2 sisters in our replacement pen who we have extremely high hopes for. They're awesome! Lot 1 is Great Guns who was Calf champion and Reserve Supreme Bull in Brandon. He was among the most talked about calves of the fall everywhere he went. All 4 bulls pattern much the same in terms of muscle design and rugged power and each was worthy of the showstring. If you're after consistency, maternal perfection, power and performance, you can mark all of these flush mates at the top of your list and buy with extreme confidence!



CITY VIEW GREAT GUNS 68G
 Reserve Supreme Bull Ag-Ex



CITY VIEW BOSS LADY 73F
 \$8000 Captain Scream daughter



CITY VIEW TARA 34F
 \$11,500 Captain Scream daughter

**Reference
Sire**

MADER THE NATIONAL 43E

MDR 43E

January 12, 2017



LFE GOTHAM 819Y
SIRE: LFE THE RIDDLER 323B
LFE BS CHARO 23Y

NCB COBRA 47Y
Dam: LFE BS VIOLET 641A
LFE BS VIOLET 128Z

Act BW 80

Adj WW 959

CE 8.2 BW 2.4 WW 90.4 YW 149.6 MK 24.9 MCE 7.8



LFE BS VIOLET 641A
Dam of The National



LFE THE RIDDLER 323B
Sire of The National

We admired The National as a calf and knew we needed to integrate him into our AI program. This is the first calf crop and, to be honest, they have blown away any expectations we had! They are soft made, good footed, heavily haired and they come easy then take off growing. His mother has been a popular donor and show female for Maders and we were very excited when he was selected as Reserve Champion Bull at Agribition last fall. The National has left us with no regrets! The sisters to lots 5-9 at home are stellar females who have us excited for the future!

5

Homo Polled

CITY VIEW GOLIATH 4G

CVBB 4G

January 3, 2019



SIRE: MADER THE NATIONAL 43E

ERIXON RED RIOT 27U
Dam: SUNNYSIDE 141B
3D MISS BLK DESTINY 141Y

Act BW 92

Adj WW 771

Adj YW 1262

CE 9.1 BW 1.9 WW 82.3 YW 125.7 MK 26.1 MCE 8.0



ERIXON RED RIOT 27U
Grandsire of Lot 5

~Member of the display string with a great disposition
~Long bodied, hairy, clean lines, great skull shape
~The National sons have lots of character and mass

6

Homo Black Homo Polled

CITY VIEW GLITCH 36G

CVBB 36G

January 15, 2019



SIRE: MADER THE NATIONAL 43E

BMR EXPLORER
Dam: CITY VIEW 6Z ZELDA 423B
ACADEMY HILL ZELDA 6Z

Act BW 81

Adj WW 610

Adj YW 1186

CE 12.1 BW -0.6 WW 70.7 YW 111.9 MK 19.3 MCE 8.4



CITY VIEW 6Z ZELDA 423B
Dam of lot 6



ACADEMY HILL ZELDA 6Z
Granddam of lot 6

~Extremely deep bellied, sound on a good foot, moderate frame
~Brody and Addison's bull
~Maternal brother to Johnstone's at Coderre

7

Hetero Black Hetero Polled

CITY VIEW GALILEO 40G

CVBB 40G

January 20, 2019

**SIRE: MADER THE NATIONAL 43E**

MR ISHEE UNIQUE 634

Dam: CITY VIEW YLANG YLANG 34Y

CITY VIEW PRETTY GIRL 17R

Act BW 105

Adj WW 654

Adj YW 1288

CE 3.3**BW 4.9****WW 78.9****YW 122.5****MK 24.4****MCE 0.4****CITY VIEW YLANG YLANG 34Y**
Dam of lot 7**MR ISHEE UNIQUE 634**
Grandsire of lot 7

~Deep bodied, smooth made and very eye appealing

~Maternal sister is one of Brody and Addison's favourite pet cows

~Maternal brother to Twin Curves Ranch

8

Homo Black Homo Polled

CITY VIEW GHOST RIDER 51G

CVBB 51G

January 20, 2019

**SIRE: MADER THE NATIONAL 43E**

CITY VIEW XCEL 33X

Dam: CITY VIEW 127T RAVEN 55Z

3D MISS BLK RAVEN 127T

Act BW 103

Adj WW 698

Adj YW 1224

CE 5.0**BW 3.6****WW 77.9****YW 119.4****MK 23****MCE 3.1****CITY VIEW 127T RAVEN 55Z**
Dam of lot 8**3D MISS BLK RAVEN 127T**
Grandsdam of lot 8

~Stunning, donor quality mother cow backed by donor 127T

~Big middled, massive hip and wide top

~Maternal brothers to Yuke's and Trevor Benson & Bonnie Brandt, 2 maternal sisters at home

~Big time potential and one we rank extremely high

9

Hetero Black Homo Polled

CITY VIEW GROUND ZERO 62G

CVJB 62G

January 22, 2019

**SIRE: MADER THE NATIONAL 43E**

BOUNDARY STUBBY 129A

Dam: CV 681D

CITY VIEW XANTHEMIA 36X

Act BW 102

Adj WW 676

Adj YW 1260

CE 4.6**BW 4.3****WW 77.6****YW 118.4****MK 25.3****MCE 3.6****CITY VIEW XANTHEMIA 36X**
Grandsdam of lot 9**BOUNDARY STUBBY 129A**
Grandsire of lot 9

~Rugged, masculine and sound with huge muscle pattern

~Grandmother has been a very consistent producer

~Stubby mother cows are awesome!

**Reference
Sire**

NCB COBRA 47Y

NEAL 47Y

February 3, 2011



TNT TOP GUN R244

SIRE: LFE VIPER 455U

LFE CHARO 56K

CNS DREAM ON L186

Dam: NCB MISS DREAM 22T

NUG SANDY 506R

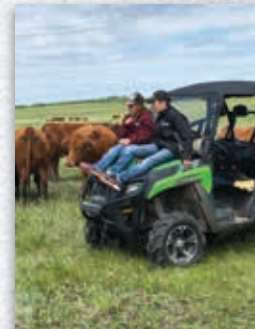
Act BW 97

Adj WW 848

Adj YW 1300

CE 11.9 BW 1.2 WW 76.7 YW 112.3 MK 26.2 MCE 9.2

With nearly 900 registered progeny, Cobra has been a trusted go to in the Simmental breed. He's known for moderate calving ease, sufficient growth, great daughters and highly marketable sons. His semen is now extremely limited so you'll start to see progeny become more difficult to come by and increase in value.



10

Hetero Black Homo Polled

CITY VIEW GIDDY UP 22G

CVBB 22G

January 10, 2019



SIRE: NCB COBRA 47Y

BLACKGOLD MIND GAME 129C

Dam: CITY VIEW SUNNY 4E

SUNNYSIDE 641D

Act BW 79

Adj WW 784

Adj YW 1296

CE 12.3 BW 1.0 WW 79.5 YW 116.7 MK 26 MCE 9.3



BLACKGOLD MIND GAME 129C
Grandsire of lot 10

~Exceptional EPD profile
~Ranked 3rd at weaning and 5th at yearling
~Performance, calving ease, style, muscle
~Endless possibilities and huge potential here. One of our favourites!

11

Homo Polled

CITY VIEW GLASS HOUSE 66G

CVJB 66G

January 25, 2019



SIRE: NCB COBRA 47Y

CMS UNIVERSE 838U

Dam: CITY VIEW TARA 99E

CITY VIEW 15Y TARA 429B

Act BW 88

Adj WW 704

Adj YW 1135

CE 8.5 BW 2.5 WW 71.5 YW 96 MK 23.7 MCE 6.3



CMS UNIVERSE 838U
Grandsire of lot 11

~Big time maternal pedigree with 838 and fullblood cows on the bottom side
~4 daughters retained from his grandmother, 429B
~Good haired, smooth made
~Potential for the heifer pen

**Reference
Sire**

TNT 90 PROOF Z101

FGN 401Z

October 29, 2012

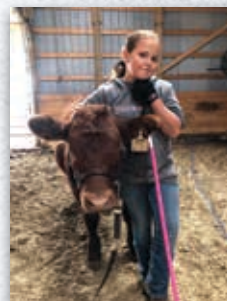


R PLUS 7077T
SIRE: DCR MR MOON SHINE Z102
DCR MS SHEARCROCK U302

TNT FIVE STAR P275
Dam: TNT MISS S17
TNT MISS HONEY L9

Act BW 70	Adj WW 691	Adj YW 1114
CE 9.0	BW 2.6	WW 86.0
YW 132.3	MK 25.5	MCE 6.1

90 Proof has been around for some time now and more and more often we've been noticing the success of his offspring. One in particular is Westcott who took the breed by storm in the past number of years. We appreciate the growth of 90 Proof's offspring and the udder quality of his daughters.



12

Homo Polled

CITY VIEW GRANDE 35G

CVBB 35G

January 14, 2019



SIRE: TNT 90 PROOF Z401

SKORS CROCKET 252X
Dam: BERWEST DEMI 632D
BERWEST XILI 38X

Act BW 89	Adj WW 708	Adj YW 1327
CE 7.3	BW 3.3	WW 81.1
YW 126.1	MK 26.1	MCE 5.9



BERWEST DEMI 632D
Dam of lot 12

- ~Total outcross pedigree in our program
- ~Liver red and stout made
- ~Even set of numbers with above average performance
- ~Beautiful udder on the mother

13

Homo Polled

CITY VIEW GURU 56G

CVJB 56G

January 21, 2019



SIRE: TNT 90 PROOF Z401

KWA ROCK 36B
Dam: CITY VIEW TARA 663D
CITY VIEW 15Y TARA 429B

Act BW 93	Adj WW 659	Adj YW 1243
CE 9.3	BW 2.5	WW 78.1
YW 118.6	MK 25.6	MCE 5.8



KWA Rock 36B
Grandsire of lot 13

- ~Small head, smooth made, long bodied
- ~Combines calving ease on the maternal side with power on the top side
- ~Really nice EPD profile
- ~Rock 36B mother cow with a bright future

14

Polled

CITY VIEW GUS 28G

CVBB 28G

January 13, 2019

**SIRE: TNT 90 PROOF Z401**

MR ISHEE UNIQUE 634

Dam: CITY VIEW WIFE MATERIAL 1W
CITY VIEW'S PRINCESS 3M

Act BW 99 Adj WW 775 Adj YW 1357

CE 5.7 BW 4.5 WW 84.9 YW 126.6 MK 26.7 MCE 2.6**CITY VIEW YOUNG VICTORIA 7Y**
Maternal sister to lot 14**MR ISHEE UNIQUE 634**
Grandsire of lot 7

~Attractive blaze face with nothing but power behind it
 ~Displayed in Medicine Hat pen of 3 bulls
 ~Extremely sound and good footed
 ~Cow family will knock your socks off! Maternal sister is the dam of lots 1-4.

**Reference
Sire****HARVIE RED SUMMIT 54B**

HAR 54B

February 8, 2014

IPU RED MOUNTAIN 49X
SIRE: KWA FLYE RED MOUNTAIN 16Z
KWA MS ROCK 14XHARVIE JDF WALLBANGER 111X
Dam: HARVIE DAKOTA ROSE 11Z
WS DAKOTA ROSE M86

Act BW 88 Adj WW 845 Adj YW 1501

CE 12.3 BW 1.1 WW 88.4 YW 138.9 MK 21.9 MCE 7.6

Summit is another sire we integrated into our AI program, specifically on heifers and some cows to moderate birthweight. He is known to calve easy without compromising performance. Offspring are typically dark red and good footed. Red Summit reached fame when he won the Alberta Supreme and a Dodge truck as a 2 year old bull.

**15**

Polled

CITY VIEW GALANT 45G

CVJB 45G

January 18, 2019

**SIRE: HARVIE RED SUMMIT 54B**

CMS UNIVERSE 838Y

Dam: CITY VIEW YOGA QUEEN 2Y
CITY VIEW WEDGEWOOD 9W

Act BW 101 Adj WW 786 Adj YW 1319

CE 5.9 BW 4.1 WW 83 YW 122.6 MK 25.1 MCE 5.1**CITY VIEW WEDGEWOOD 9W**
Granddam of lot 15

~Good looking, long bodied, larger framed
 ~838 mother cow who's done a great job
 ~Maternal brother to Creekside Ranch
 ~Boss Lady cow family. His mother and lot 16 are siblings.

16

Homo Polled
CITY VIEW GUILT FREE 83G
 CVJB 83G January 31, 2019

**SIRE: HARVIE RED SUMMIT 54B**

LCHMN BODYBUILDER 7303F
Dam: CITY VIEW WEDGEWOOD 9W
 CITY VIEW FIRST LADY

Act BW 104 (ET) Adj WW 747 Adj YW 1374

CE 6.7 BW 3.4 WW 77.3 YW 118.3 MK 29.7 MCE 5.9



CITY VIEW WEDGEWOOD 9W
 Dam of lot 16



LCHMN BODYBUILDER 7303F
 Grandsire of lot 16

- ~This ET son of the awesome 9W is longer than a well rope!
- ~Will increase pounds at weaning and increase frame
- ~Maternal brothers to Qu'Appelle Trails and Abound and sisters at home
- ~Bodybuilder x Summit combination will make great females

17

Homo Polled
CITY VIEW GUSTOV 74G
 CVBB 74G January 27, 2019

**SIRE: HARVIE RED SUMMIT 54B**

BLACKGOLD MIND GAME 129C
Dam: CITY VIEW NORDICA 63E
 CITY VIEW 29W NORDICA 13Z

Act BW 96 Adj WW 693 Adj YW 1392

CE 8.3 BW 4.0 WW 84.8 YW 136 MK 20.7 MCE 6



CITY VIEW 29W NORDICA 13Z
 Granddam of lot 17

- ~These Red Summit sons are bigger framed and really long bodied
- ~We wish we had more Mind Game daughters
- ~Beautiful 2 year old mother cow was Brody's 4-H heifer
- ~Maternal brother on the ground will be a feature next spring!

18

Polled
CITY VIEW GOTHIC 50G
 CVBB 50G January 20, 2019

**SIRE: HARVIE RED SUMMIT 54B**

LRX ROCKET 51B
Dam: CITY VIEW TAKALA 22E
 GREEN SPRUCE TAKALA 10T

Act BW 86 Adj WW 695 Adj YW 1351

CE 8.2 BW 3.1 WW 83.2 YW 134.2 MK 24.8 MCE 5.6



GREEN SPRUCE TAKALA 10T
 Granddam of lot 18



LRX ROCKET 51B
 Grandsire of lot 18

- ~Dark cherry red and impressive from the profile
- ~Moderate birthweight with ample growth
- ~2 year old mother cow with fullblood in her pedigree
- ~Grandmother is going strong at 12

**Reference
Sire**

Homo Polled 7/8
CDI HOMETOWN 246A
FGN 246A March 24, 2013



GW PREDESTINED 701
SIRE: GW REDESTINED 642X
GW MISS ORLANDO 453N

NF TRUMP S582
Dam: CDI MS TRUMP 86U
CDI MISS SHEAR FORCE 10N

Act BW 104	Adj WW 868	Adj YW 1634
CE 4.3	BW 3.9	WW 93.9
YW 147.5	MK 22.8	MCE 1.8



CDI MS TRUMP 86U
Dam of Hometown

This is the second set of calves from Hometown we've had and we admire the performance they have. Hometown is a bull out of the US with unbelievable data and liver red colour. These sons are great options for producers who sell by the pound.

19

Homo Polled 7/8
CITY VIEW GLORY DAYS 23G
CVBB 23G January 11, 2019



SIRE: CDI HOMETOWN 246A

BOUNDARY STUBBY 129A
Dam: CITY VIEW YOLANDA 540C
CITY VIEW YOLANDA 20Y

Act BW 88	Adj WW 703	Adj YW 1136
CE 8.5	BW 2.5	WW 71.5
YW 96	MK 23.7	MCE 6.3



CITY VIEW YOLANDA 20Y
Granddam of lot 19

~Super impressive rascal that has a real herd bull look to him
~Big, deep hip
~Maternal sister looks really awesome
~Stubby x 838 x Ishee - pedigree is a who's who of our program

20

Polled 7/8
CITY VIEW GHOST TOWN 59G
CVBB 59G January 22, 2019



SIRE: CDI HOMETOWN 246A

MRL 91Y
Dam: MORE'S MS AVA 309A
MORE'S SPLISH SPLASH 610S

Act BW 97	Adj WW 763	Adj YW 1246
CE 7.3	BW 3.2	WW 75.9
YW 105.6	MK 28.7	MCE 6.4



MORE'S MS AVA 309A
Dam of lot 20

~Stout made, full of muscle and sound
~Maternal brothers to Hippert's and Dave McKay
~Maternal sister looks really awesome
~An outcross pedigree to our entire program

**Reference
Sire**

CITY VIEW ENVISION 54E

CVBB 54E

January 23, 2017



CNS DREAM ON L186
SIRE: WINCHESTER HR P8315
HS REFLECTIONS J34

KOP REVOLVER 116Z
Dam: BLI CRANBERRY 508C
DIAMOND LADY XPRESSO 61X

Act BW 84	Adj WW 644	Adj YW 1226
CE 13.5	BW 1.8	WW 64.5
YW 89.1	MK 23.7	MCE 6.5



BLI CRANBERRY 508C
Dam of Envision



WINCHESTER HR P8315
Sire of Envision

Envision (pictured as a yearling) is a bull we raised with an outcross pedigree. He had tons of calving ease and we debated keeping him for ourselves but lucked out when Cypress Farms bought him and we're able to use him for early breeding. He cleaned up on red heifers after Al'ing and calved like a dream!

SIRE: CITY VIEW ENVISION 54E

BOUNDARY STUBBY 129A
Dam: CITY VIEW TARA 88E
CITY VIEW 33T TARA 468B

Act BW 82	Adj WW 757	Adj YW 1205
CE 10.6	BW 2.0	WW 68.7
YW 95	MK 24.4	MCE 5.5



BOUNDARY STUBBY 129A
Grandsire of lot 21

- ~Liver red with black features and a sweeping blaze face
- ~Deep flanked
- ~Ample calving ease to use on heifers with adequate performance
- ~Stubby 2 year old mother cow with a fullblood background

SIRE: CITY VIEW ENVISION 54E

ERIXON LAD 21C
Dam: SUNNYSIDE 641E
SUNNYSIDE BELLE 64Y

Act BW 92	Adj WW 730	Adj YW 1221
CE 10	BW 3.3	WW 71.2
YW 102.6	MK 23.2	MCE 5.5



ERIXON LAD 21C
Grandsire of lot 22

- ~Big blaze face is bred in for generations
- ~Stout and big middled
- ~2 year old mother cow did a great job

21

Homo Polled

CITY VIEW GRAVITY 104G

CVJB 104G

February 10, 2019



22

Polled

CITY VIEW GOLDFINGER 110G

CVBB 110G

February 12, 2019



23

Hetero Black Homo Polled
CITY VIEW GRETZKY 21G
 CVBB 21G January 10, 2018



DESTINY BUCKEYE
SIRE: HARVIE BOONDOCK 12Z
 JDP PEPSI 61U

LCHMN BODYBUILDER 7303F
Dam: CITY VIEW KORA 5E
 CITY VIEW XCEPTIONAL 17X

Act BW 106	Adj WW 734	Adj YW 1344
CE -2.2	BW 6.6	WW 74.5
YW 103.9	MK 23.7	MCE -5.5



CITY VIEW XCEPTIONAL 17X
 Granddam to lot 23



HARVIE BOONDOCK 12Z
 Sire to lot 23

~A real beef bull with tons of muscle dimension and raw power
 ~The first Boondock in a while and he's a good one!
 ~The Kora cow family has been very good to us, hard working mama cows!

24

Hetero Polled Fullblood
CITY VIEW GO TIME 49G
 CVJB 49G January 19, 2018



ANCHOR T RUSTY 59G
SIRE: STARWEST POL BLUEPRINT
 PHS HOMOZYGOUS XCEPTIONAL

DOUBLE BAR D SPITFIRE 20X
Dam: CITY VIEW TARA 510C
 RIVERBEND OF TARA 33T

Act BW 90	Adj WW 602	Adj YW 1192
CE 10.5	BW 2.3	WW 62.9
YW 96.3	MK 32	MCE 7.5



DOUBLE BAR D SPITFIRE 20X
 Grandsire to lot 24



STARWEST POL BLUEPRINT
 Sire of lot 24

~Our only fullblood in the pen this year and he's polled
 ~Well put together and built right
 ~Fullblood cattle are in high demand for their maternal power

**Reference
 Sire**

WLB BOUNTY HUNTER 365C
 WLB 365C January 3, 2015

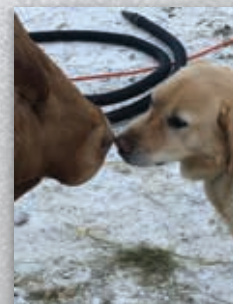


LFE RANCHER 396U
SIRE: LFE BOUNTY 3118Z
 LFE BS KEEPSAKE 158S

LFE THE DARK NIGHT 350U
Dam: LFE BS MARY 26A
 LFE BS MARY 25U

Act BW 84	Adj WW 719	Adj YW 1394
CE 9.0	BW 2.3	WW 72.6
YW 121.1	MK 24.3	MCE 4.5

Bounty Hunter is a bull we used through AI, mainly on heifers, with really good results. These sons are moderate and well put together. If you're in the area, stop and see the daughters in our replacement pen. We haven't been as excited about a group of females for a long time. They're absolute stunners!



25

Hetero Black Homo Polled
CITY VIEW GOLD STANDARD 5G
 CVBB 5G January 4, 2019



SIRE: WLB BOUNTY HUNTER 365C

MRC BROKER 6Z
Dam: CITY VIEW RIGHT 6E
 CITY VIEW 12X RIGHT 408B

Act BW 84	Adj WW 712	Adj YW 1360
CE 8.4	BW 2.2	WW 76.7
YW 123.9	MK 23.9	MCE 3.2



CITY VIEW 12X RIGHT 408B
 Granddam to lot 25



MRC BROKER 6Z
 Grandsire of lot 25

- ~Great disposition with a full blaze and lots of chrome
- ~Homo polled, will leave red or black calves
- ~Really long bodied and smooth made with a really attractive look
- ~Traces back to donor cow 12X who is an exceptional beast!

26

Hetero Black Homo Polled
CITY VIEW GRAFFITI 9G
 CVBB 9G January 5, 2019



SIRE: WLB BOUNTY HUNTER 365C

BOUNDARY STUBBY 129A
Dam: CITY VIEW RAVEN 19E
 CITY VIEW 127T RAVEN 477B

Act BW 75	Adj WW 649	Adj YW 1268
CE 10	BW 1.2	WW 67.5
YW 106.9	MK 22.3	MCE 3.5



3D MISS BLK RAVEN 127T
 Great Granddam to lot 26 & 27

- ~Super sound package with a great foot
- ~Homo polled, highly maternal pedigree, light birthweight
- ~Potential for use on heifers
- ~The Raven cow family is extremely consistent, traces to donor 127T

27

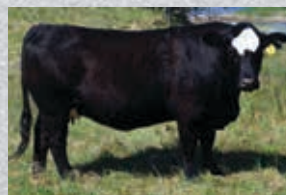
Hetero Black Homo Polled
CITY VIEW GREY GOOSE 25G
 CVBB 25G January 5, 2019



SIRE: WLB BOUNTY HUNTER 365C

MRC BROKER 6Z
Dam: CITY VIEW RAVEN 94E
 CITY VIEW 127T RAVEN 55Z

Act BW 77	Adj WW 645	Adj YW 1163
CE 7.4	BW 1.9	WW 67.5
YW 106.6	MK 21.9	MCE 1.9



CITY VIEW RAVEN 94E
 Dam of lot 27



CITY VIEW 127T RAVEN 55Z
 Granddam to lot 27

- ~Best known as 'Bullseye', his mother was Addison's 4-H heifer
- ~Homo polled, highly maternal pedigree, light birthweight
- ~Potential for use on heifers
- ~His mother is another of the powerful Raven cows

**Reference
Sire**

BERTS DAKOTA 7D
NRD 7D January 7, 2016



HARVIE JDF WALLBANGER 111X
SIRE: ERIXON REVELSTOCK 41A
ERIXON LADY 10U

LFE BLACK LAKOTA 385W
Dam: SWAN LAKE NOREMAC 75Y
3D MISS RED NOREMAC 16M

Act BW 94	Adj WW 779	Adj YW 1355
CE 8.8	BW 3.3	WW 79.5
YW 130.2	MK 27.8	MCE 4.4



SWAN LAKE NOREMAC 75Y
Dam of Dakota

Bert is our walking red power bull who offers major maternal capability and high performance. His dam is a beautiful cow who left her mark in terms of overall dimension, volume, and depth from end to end. His first group of sons sold last year and were very well received. The Bert daughters look great as well and he's proving to be the well rounded sire we'd hoped he would be.

SIRE: BERTS DAKOTA 7D

MRC BROKER 6Z
Dam: CITY VIEW BOSS LADY 668D
CITY VIEW YAFFINGALE 8Y

Act BW 101	Adj WW 828	Adj YW 1292
CE 2.7	BW 6.5	WW 86.3
YW 130.8	MK 24.2	MCE 0.2



MRC BROKER 6Z
Grandsire of lot 28

- ~Tons of beef bull character
- ~Hairy and soft made, sons and daughters will both be awesome
- ~Maternal brother sold to Blair & Steph Yuke
- ~Catches your attention in the pen every time

SIRE: BERTS DAKOTA 7D

LRX ROCKET 51B
Dam: CITY VIEW ADDIE 636D
KINDRED SPIRIT ADDIE 55A

Act BW 99	Adj WW 712	Adj YW 1155
CE 6.7	BW 4.2	WW 69.8
YW 104.8	MK 31.3	MCE 5.2



KINDRED SPIRIT ADDIE 55A
Grandsdam of lot 29



CITY VIEW EXIT STRATEGY 11E
Full brother to dam of lot 29

- ~Full blaze face in a really tidy made package
- ~We love the first cross of red genetics onto fullblood cows!
- ~Maternal brother sold to Trevor Benson and Bonnie Brandt
- ~Middle of the road kind of bull that does a lot of things right

28

Homo Polled
CITY VIEW G FORCE 89G
CVJB 89G February 2, 2019



29

Homo Polled
CITY VIEW GREY GOOSE 101G
CVBB 101G February 9, 2019



30

Homo Black Homo Polled
CITY VIEW GOLD MINE 99G
 CVBB 99G February 9, 2019



ERIXON PRETTY RESTLESS 68B
SIRE: MRL 231D
 MRL MISS 310X

HARVIE BOONDOK 12Z
Dam: CITY VIEW 127T RAVEN 566C
 3D MISS BLK RAVEN 127T

Act BW 90	Adj WW 680	Adj YW 1368
CE 6.8	BW 2.8	WW 67.5
YW 92.6	MK 23.4	MCE 2.1



CITY VIEW RAVEN 100F
 Maternal sister to Lot 30



MRL 231D
 Sire of Lot 30

- ~The only son of our newest herd bull 231D or 'Dave'
- ~His sire is about as heavy muscled as they come
- ~Another one from the Raven cow family, they pay their way every time
- ~Maternal sister sold to Rose Hill Simmentals, Reserve Supreme Female at PA Regional Show

31

Homo Polled
CITY VIEW GENERAL 114G
 CVBB 114G February 9, 2019



ERIXON WHY NOT 111B
SIRE: TLSS DJIMON 64D
 CHUB'S FLIRT 6P

CITY VIEW BREWHOUSE 410B
Dam: CITY VIEW WINDY 604D
 PRAIRIE WIND MISS 10A

Act BW 100	Adj WW 762	Adj YW 1285
CE 2.6	BW 5.4	WW 80.7
YW 124.5	MK 22.1	MCE 2.3



TLSS DJIMON 64D
 Sire of Lot 31



CITY VIEW MISS 70E
 Maternal Sister to dam of lot 39

- ~The only son of 64D whose mother was the World Forum Champion
- ~A ruggedly designed bull with lots of overall mass
- ~Dam's sister sold for \$12,000 to Ashworth Farm & Ranch
- ~Grandsire was a high seller to Twin Curves Ranch for \$15,000

**Thank you to everyone who attended our field
 day this summer. Please stop by anytime!**





Sunnyside Simmentals

The Turnbull Family

306 731 2703

Welcome to the 10th Annual Bull Sale! We would like to thank the Barnett & Mountenay families for again allowing us to be part of this great event. As always, the friendship, support and laughter is the best part of being involved with such a tremendous group of people. This year we have brought 5 bulls sired by our new herd sire SVS Walker 719E for your appraisal. This bull has far surpassed our expectations and with the 2020 calf crop we continue to be impressed with his performance. Our bulls have been fed at home on a high protein ration and hay until late December when they went to City View to be cared for until sale time. Please call if you have any questions or contact City View if you would like to view the bulls prior to the sale. I encourage you to stop and check out the City View pen of bulls. I am certain you will be impressed with the exceptional quality and will find there is something for everyone! Thank you to our past customers, bidders and friends - without you there would be no sale. We appreciate your support. Don't forget the great lunch prior to the sale - it gets better every year! Hope to see you there!

Tom & Sharon Turnbull and family

Reference Sire

Homo Black Homo Polled
SVS WALKER 719E

TLAS 719E January 15, 2017



NCB COBRA 47Y
SIRE: MADER WALK THIS WAY 224B
MADER P IRON SUGAR 7X

SVS CAPTAIN MORGAN 11Z
Dam: SVS BLK ZOEY 401B
MRL MISS 405X

Act BW 86	Adj WW 820	Adj YW 1449
CE 12.7	BW 0.7	WW 72.3
YW 110.6	MK 22.6	MCE 8.6

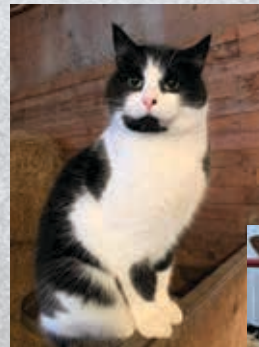


MADER WALK THIS WAY 224B
Sire of WALKER 719E



SVS CAPTAIN MORGAN 11Z
Grandsire of WALKER 719E

SVS Walker 719E is a homo polled homo black bull we purchased from Sunny Valley Simmentals at their 2018 bull sale. He is big topped and heavily muscled with exceptional foot quality and a great disposition. We are very impressed with the traits he has passed down to his progeny and with the development of his calves. We were looking for calving ease without compromising growth and production and he has met and exceeded our expectations.



32

Black Polled
SUNNYSIDE 642G
 TJT 642G January 22, 2019



SIRE: SVS WALKER 719E

DOUBLE BAR D TANKER 191Y
Dam: SUNNYSIDE MISS TANKER 642A
 SUNNYSIDE BELLE 64Y

Act BW 104	Adj WW 746	Adj YW 1407
CE 8.1	BW 3.1	WW 76.3
YW 120.8	MK 26.2	MCE 6.1



DOUBLE BAR D TANKER 191Y
 Grandsire of Lot 32

642G is a solid black powerhouse of a bull with a maternal pedigree which includes arguably our favourite cow family. His dam is an attractive, highly productive, hard working female with tons of volume and depth. 642A traces back to the full blood SRS Berretta 64R cow that we had for many years.

33

Black Polled
SUNNYSIDE 32G
 TJT 32G January 3, 2019



SIRE: SVS WALKER 719E

CITY VIEW ASTEROID 333A
Dam: SUNNYSIDE BAILEY 32D
 SUNNYSIDE JEWEL 31B

Act BW 101	Adj WW 720	Adj YW 1323
CE 8.9	BW 2.3	WW 71.9
YW 107.9	MK 24.2	MCE 5.9



CITY VIEW ASTEROID 333A
 Grandsire of Lot 33

32G is a moderate frame, long bodied, correct bull with a great hair coat. His dam is a dark red, blaze face young cow that comes from one of the strongest maternal lines in our herd. We have several cows with the Lazy Bar B Haley 3N influence. We always end up deciding to keep replacement heifers from this cow family because they are such predictable and consistent, heavy milking hard working cows and his 32D dam is no exception.

34

Black Polled
SUNNYSIDE 72G
 TJT 72G January 7, 2019



SIRE: SVS WALKER 719E

REMINGTON RED LABEL HR
Dam: ERIXON LADY 72W
 ERIXON LADY 33N

Act BW 98	Adj WW 667	Adj YW 1378
CE 8.9	BW 2.5	WW 71
YW 110.2	MK 26.0	MCE 5.2



REMINGTON RED LABEL HR
 Grandsire of Lot 34

The dam of 72G is a dark red blaze face Red Label daughter we bought as a heifer from Erixon Simmentals and she has been consistent and productive ever since. At 10 years of age, she is going strong with great feet and udder. She is one of the deepest cows you will ever find and continues to work hard in our herd every year. 72W is also the granddam to lot 36. 72G has the attractive face and tons of length top.

35Black Polled
SUNNYSIDE 30G

TJT 30G

January 12, 2019

**SIRE: SVS WALKER 719E**

RC CLUB KING 040R

Dam: JHSN CLUB QUEEN 30Y

BDS MISS BLACK DIAMOND 30T

Act BW 103	Adj WW 792	Adj YW 1416
CE 11.3	BW 2.0	WW 81.9
YW 122.1	MK 22.2	MCE 6.2

**RC CLUB KING 040R**
Grandsire of Lot 35

30G is a square, complete bull with tons of depth and volume. His dam is a big bodied, heavy milking RC Club King daughter that defines production. She continues to produce marketable, consistent calves year after year. She already has a 2020 heifer calf on the ground sired by SVS Walker 719E that we are super excited to watch grow.

36Black Polled
SUNNYSIDE 73G

TJT 73G

January 16, 2019

**SIRE: SVS WALKER 719E**

DOUBLE BAR D TANKER 191Y

Dam: SUNNYSIDE 72C

ERIXON LADY 72W

Act BW 108	Adj WW 773	Adj YW 1533
CE 6.8	BW 3.8	WW 85.9
YW 138	MK 23.7	MCE 4.5

**SUNNYSIDE 72B**
Full Sister to the dam of Lot 36

73G has tons of performance and growth. His dam is a black blaze face daughter of Double Bar D Tanker 191Y that is developing into an excellent producing young cow. 72C is a big volume cow with a beautiful udder and sound feet and legs. She has a great hair coat and the exceptionally quiet disposition that we value in our cattle.

This is an interesting study of birth weight and calving ease every bull buyer should take a look at.

Studies in Wyoming, Montana and Colorado came to the following conclusions:

1. The birth weight itself influences calving ease by 65%.
2. The female has 60-70% influence on the birth weight of her calf.
3. The bull has 30-40% influence on the birth weight of his progeny.
4. Pelvic measurements and angle as well as the shape of the calf have 35-40% influence on calving ease.
5. Length of gestation greatly affects birth weight. A fetus can gain over one pound per day in the last days of gestation.
6. Weather and temperature during the last 30 days of pregnancy affect the length of gestation.
7. Size, maturity and body condition of the cow influence calving ease.

Most commercial producers do not weigh calves at birth. Guessing is as inaccurate as driving with a broken speedometer. What's thought to be 55 mph may actually be 65 or 70 mph. What is thought to be 70-80 lb. may actually be 80-90 lb.

Remember that everything is relevant. Increased growth, frame and performance will increase birth weight. A longer bodied calf will weigh more. If a calf is expected to have genetics for growth, it will display this prior to birth as well. As a rule of thumb, it takes a calf weighing 85 pounds at birth to finish at 1200-1250 pounds.

A cow should easily give birth to a calf weighing 8% of her body weight. Therefore, a 1200 pound cow should give birth to a 96 lb. calf with ease.



Ivanhoe Angus

The Mountenay Family

306 345 2560 or 306 630 5871

37

IVANHOE CARBELLO 1G

ASJ 1G

February 17, 2019



YOUNG DALE XCALIBER 32X
SIRE: YOUNG DALE CARBELLO 33C
YOUNG DALE BLACKBIRD 83R

CRESCENT CREEK 07 EMBLAZON 62W
Dam: IVANHOE LUCY 16B
IVANHOE LUCY 52T

Act BW 95 Adj WW 681

BW 4.2 WW 47 YW 80 MK 16 TM 40 CE -5.0 MCE 1



YOUNG DALE CARBELLO 33C
Sire of Lot 37

38

IVANHOE IDEAL 30G

ASJ 30G

March 23, 2019



SANDY BAR IDEAL 19S 185W
SIRE: SANDY BAR IDEAL 185W 216Y
SANDY BAR NEONIA 54W

YOUNG DALE T D 58R
Dam: BROOKE'S EDGE PRIDE 8W
CLT PRIDE 420P

Act BW 90 Adj WW 708

BW 3.6 WW 46 YW 75 MK 20 TM 43 CE -3.0 MCE 2



SANDY BAR IDEAL 185W 216Y
Sire of Lot 38



**Reference
Sire**

CRESCENT CREEK RITO 139C

WOS 139C

February 24, 2015



SINCLAIR ENTREPRENEUR 8R101
SIRE: MC CUMBER 8R101 RITO 1136
MISS WIX 7176 OF MC CUMBER

CRESCENT CREEK SCOTCHMAN 46W
Dam: CRESCENT CREEK LADY BATE 62Z
CRESCENT CREEK LADY BATE 6N

Act BW 81	Adj WW 712	Adj YW 1198	1396
BW 1.3	WW 29	YW 52	MK 22 TM 37 CE 5.0 MCE 2.0 E 4.0

Crescent Creek Rito 139C has sired three yearling bulls for this year's sale. The Rito sire group have added size and scale. Crescent Creek Rito 139C has a ton of middle and correct leg with a great foot.

39

IVANHOE RITO 3G

ASJ 3G

March 13, 2019



SIRE: CRESCENT CREEK RITO 139C

YOUNG DALE T D 58R
Dam: IVANHOE EDGE PRIDE 46Y
BROOKE'S EDGE PRIDE 1S

Act BW 94	Adj WW 686
BW 5.7	WW 47 YW 84 MK 22 TM 46 CE -10 MCE -6.0



**Grandkids
Ross, Cacey and Edie Toner**

40

IVANHOE RITO 51G

ASJ 51G

April 1, 2019



SIRE: CRESCENT CREEK RITO 139C

SANDY BAR INNOVATOR 46R
Dam: BROOKE'S EDGE S HEROINE 5Z
IVANHOE S HEROINE 3N

Act BW 90	Adj WW 759
BW 5.4	WW 48 YW 86 MK 22 TM 46 CE -11 MCE -8.0



Granddaughter, Edie Toner

**Reference
Sire**

SANDY BAR AMBUSH 10Y 29A

IJP 29A

February 21, 2013



DBRL AMBUSH 03M
SIRE: SANDY BAR AMBUSH 10Y
CFS LADY 8U

VDAR NEW TREND 315
Dam: MCS LARK 9N
HOLLBROOK MISS LARK 27G

Act BW 81	Adj WW 712	Adj YW 1198
BW 1.3	WW 29	YW 52
MK 22	TM 37	CE 5.0
MCE 2.0		

Sandy Bar Ambush 10Y 29A has sired two yearling bulls and one two year old for this year's sale. Sandy Bar Ambush sires bulls and females that are strong topped, long sided with great muscle shape. Sandy Bar Ambush 10Y 29A sires calves that are born extremely easy but grow afterwards.

41

IVANHOE AMBUSH 53F

ASJ 53F

April 3, 2018



SIRE: SANDY BAR AMBUSH 10Y 29A

SANDY BAR INNOVATOR 46R
Dam: iVANHOE HEROINE A 12Z
IVANHOE HEROINE A 50T

Act BW 90	Adj WW 639
BW 2.9	WW 30
YW 55	MK 17
TM 32	CE -3.0
MCE -7	



IVANHOE HEROINE A 12Z
Dam of Lot 41 & 42

42

IVANHOE AMBUSH 23G

ASJ 23G

March 22, 2019



Act BW 93	Adj WW 639
BW 4.0	WW 29
YW 55	MK 17
TM 32	CE -6.0
MCE -8	

SIRE: SANDY BAR AMBUSH 10Y 29A

SANDY BAR INNOVATOR 46R
Dam: iVANHOE HEROINE A 12Z
IVANHOE HEROINE A 50T



Granddaughter, Brynn Rieder

43**IVANHOE AMBUSH 5G**

ASJ 5G

March 16, 2019

SIRE: SANDY BAR AMBUSH 10Y 29A

YOUNG DALE T D 58R

Dam: BROOKE'S EDGE ROYAL 6W

IVANHOE ROYAL 23N

Act BW 72 Adj WW 687

BW -0.3 WW 31 YW 50 MK 22 TM 38 CE 5.0 MCE 3



Grandson, Ross Toner

**Reference
Sire****YOUNG DALE PAN 149C**

YDF 149C

March 5, 2015

YOUNG DALE PANARAMA 66T

SIRE: YOUNG DALE PAN 96Z

YOUNG DALE JESTRESS 70P

GEIS BLACKMAN 88'08

Dam: GEIS GEORGINA 314'11

GEIS GEORGINA 984'09

Act BW 80

Adj WW 704

BW 1.2 WW 42 YW 72 MK 18 TM 39 CE 2.0 MCE 10.0



Young Dale Pan 149C has sired three yearling bulls and one 2 year old for this year's sale. This sire group is relatively new to the Ivanhoe sale program. Young Dale Pan 149C has sired bulls with strength, depth and a great rib shape. This sire group has a tremendous amount of eye appeal. Young Dale Pan 149C has a great presence and disposition.

44**IVANHOE PAN 71F**

ASJ 71F

April 28, 2018

SIRE: YOUNG DALE PAN 149C

SANDY BAR AMBUSH 10Y 29A

Dam: IVANHOE HEROINE 23C

BROOKE'S EDGE S HEROINE 5Z

Act BW 85 Adj WW 691

BW 2.1 WW 39 YW 67 MK 20 TM 40 CE 0.0 MCE 3



45**IVANHOE PAN 16G**

ASJ 16G

March 20, 2019

SIRE: YOUNG DALE PAN 149C

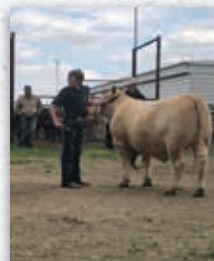
SANDY BAR IDEAL 185W 216Y

Dam: IVANHOE PRIDE 26C

TAF PRIDE 42P



Act BW 87 Adj WW 708

BW 2.4 WW 44 YW 74 MK 22 TM 44 CE 1 MCE 8.0**Grandson, Will Reider****46****IVANHOE PAN 34G**

ASJ 34G

March 24, 2019

SIRE: YOUNG DALE PAN 149C

WILMO SOLUTION 9Y

Dam: WILMO BLACK LUCY 8A

IVANHOE BLACK LUCY 34T



Act BW 72 Adj WW 717

BW -0.4 WW 44 YW 73 MK 22 TM 44 CE 6.0 MCE 10**47****IVANHOE PAN 45G**

ASJ 45G

March 29, 2019

SIRE: YOUNG DALE PAN 149C

SANDY BAR IDEAL 185W 216Y

Dam: IVANHOE PEARL 42C

IVANHOE PEARL 1U



Act BW 83 Adj WW 743

BW 2.1 WW 47 YW 77 MK 18 TM 42 CE 0.0 MCE 6**Granddaughter, Cacey Toner**

ABOUND LIVESTOCK

Brian Barnett & Lisa Martin
306 631 7539



Welcome to the 10th annual City View Simmentals and Ivanhoe Angus bull sale. Ten years flew by it seems and I can still remember talks between us three brothers and the Mountenay family on just how we were going to make this all happen. However, I guess all the worry has turned into a great adventure for everyone involved and it's all thanks to you the customer.

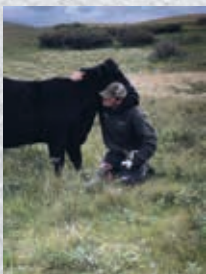
2019 will go down in the books for reasons out of everyone's control starting off with extreme drought then extreme wet and finishing with near impossible harvesting conditions. I guess the old saying "the strong survive" rings true the last few years. This past year had some game changing opportunities for us here at Abound Livestock as we have been lucky enough to expand our land base of pasture and hay land. We are excited for this as it will give us the ability to expand future breeding options!

We study these Angus momma cows hard! Most evenings over supper...who should stay, who should go and what direction are we headed. These cows are hardworking girls. This year fall grazing on stubble and native grass until mid December which lead into swath grazing and eventually making their way into the yard shortly before calving. The bulls are weaned middle of October and developed on a high roughage ration of grass hay and 14% pellets fed at 1.5% of body weight.

This will be our third offering of Angus bulls to the market under the name Abound and these bulls, in our minds, are the best to date. We feel you will notice some consistency and a trend as you go through this year's selection of bulls. Our roots have always and will always stem back to the commercial industry. It's where we got our start and will always be the center of our goals. We realize that our payday is at weaning, so we are trying to select genetics that perform while keeping the cattle realistic with the basics coming first before the bells and whistles. Just because they may be a champion on a certain day doesn't always make them right in our minds.

We would like to thank everyone who has supported us in the past. Feel free to call us if we can help make your herd sire shopping easier and we welcome you to be our guest at any time!

Brian and Lisa



**Reference
Sire**

BLACK RIDGE HARVESTOR 66D

DUM 66D

February 8, 2016

SAV HERITAGE 6295

SIRE: SAV HARVESTOR 0338

SAV EMBLYNETTE 7749

PEAK DOT PREDOMINANT 135S

Dam: BLACK RIDGE LEONA 22W

BLACK EDGE LEONA 22S

Act BW 95

Adj WW 755

Adj YW 1320

BW 3.1 WW 51 YW 84 MK 18 TM 44 CE 3.0 MCE 7.0



SAV HARVESTOR 0338
Sire of Harvester 66D

Black Ridge Harvester 66D is pure beef bull with incredible muscle shape. He is super correct with a beautiful, big foot and is one of the most easy keeping bulls you will find! In the spring of 2017, we were lucky to visit the Moleski's for a tour and then made the trip to Yorkton to be sure "John" came home to Abound. His first calf crop exceeded our hopes and this second group are even better! A bull that can leave you sound and attractive cattle in both the bull and heifer pens is very special!

48**ABOUND HARVESTOR 919G**

BARN 919G

February 9, 2019

**SIRE: BLACK RIDGE HARVESTOR 66D**

SANDY BAR IDEAL 185W 216Y

Dam: IVANHOE ROYAL PRIDE 52B

IVANHOE ROYAL PRIDE 3Z

Act BW 89 Oct.14 Wt 928 Feb.1 Wt 1341

BW 2.6 WW 45 YW 78 MK 20 TM 43 CE 2.0 MCE 7



IVANHOE ROYAL PRIDE 52B
Dam of lot 48 with full brother



ABOUND HARVESTOR 810F
Full brother to lot 48

Length...Stretch...Freight Train...there is so many ways to say it but 919G fits them all. Our honest working Royal Pride cow put everything she had into her calf yet again this year. She was probably an excited momma on weaning day when she finally got rid of her 928 lb baby! The bone, the length, the overall mass of this 919G is sure to catch your eye!

49**ABOUND HARVESTOR 916G**

BARN 916G

February 7, 2019

**SIRE: BLACK RIDGE HARVESTOR 66D**

MERIT 2102

Dam: IVANHOE HEROINE A 37B

IVANHOE HEROINE A 23Y

Act BW 80 Oct.14 Wt 923 Feb.1 Wt 1232

BW 1.6 WW 47 YW 83 MK 19 TM 43 CE 4.0 MCE 8



IVANHOE HEROINE A 37B
Dam of lot 49

Abound 916G in our minds is a very complete Harvester son and truly demonstrates what this sire group has to offer. Small, neat, clean heads with a ton of muscle pattern, depth and style. If you like bulls that are super deep and soggy with length and disposition to boot then this is your bull!

50**ABOUND HARVESTOR 926G**

BARN 926G

February 13, 2019

**SIRE: BLACK RIDGE HARVESTOR 66D**

ISLA BANK WIDESPREAD 67T

Dam: IVANHOE WWF 64Z

IVANHOE ROYAL PRIDE 3Z

Act BW 89 Oct.14 Wt 858 Feb.1 Wt 1234

BW 2.9 WW 44 YW 79 MK 15 TM 37 CE 1.0 MCE 6



IVANHOE WWF 64Z
Dam of lot 50



ABOUND HARVESTOR 816F
Full brother to lot 50

We had the opportunity to stop in and see a full brother to Abound 926G last summer. We were very impressed with his growth and muscle pattern. We feel this bull expresses a very similar profile to his brother. Very smooth through the shoulders with a good neck extension, nice hair coat and just an overall complete package!

51**ABOUND HARVESTOR 917G**

BARN 917G

February 7, 2019

SIRE: BLACK RIDGE HARVESTOR 66D

HF TIGER 98X

Dam: SUNNY GROVE ATLANTA 54B

IVANHOE ATALANTA 41X

Act BW 82 Oct.14 Wt 895 Feb.1 Wt 1263

BW 1.2 WW 46 YW 76 MK 20 TM 43 CE 4.0 MCE 6



At the start of the 2019 calving season, Lisa said that she wasn't going to be friends with the bull pen this year but, whoops! It happened again and 917G is this year's suspect. The disposition of all these Harvester sons is second to none. Besides being kind of a teddy bear, 917G has a super wide top with a ton of hair and out of a tremendous HF Tiger cow!

52**ABOUND HARVESTOR 913G**

BARN 913G

February 5, 2019

SIRE: BLACK RIDGE HARVESTOR 66D

BELL QUANTUM 26T

Dam: GGA BLACK LUCY 1Z

IVANHOE B BLACK LUCY 4T

Act BW 95 Oct.14 Wt 913 Feb.1 Wt 1197

BW 4.5 WW 42 YW 73 MK 20 TM 41 CE -3.0 MCE 1



ABOUND HARVESTOR 818F
Full brother to lot 52

If you need multiple bulls to run together and want consistency, your looking at the right group of bulls. This year the Harvester sire group had an average weaning weight of 885 lbs and when we lined these bulls up we couldn't help but admire the consistency. It's really hard to write about these Harvester sons without sounding like a broken record. When you use a bull like 913G, you are going to get depth and thickness and overall well-balanced calves.

53**ABOUND HARVESTOR 902G**

BARN 902G

January 26, 2019

SIRE: BLACK RIDGE HARVESTOR 66D

MERIT 8808

Dam: GLENDOR ELLA MINA 5A

GLENDOR ELLA MINA 32T

Act BW 90 Oct.14 Wt 861 Feb.1 Wt 1211

BW 4 WW 42 YW 75 MK 14 TM 35 CE -1.0 MCE 8



ABOUND HARVESTOR
Full brother to lot 53



MERIT 8808
Grandsire of lot 53

His Merit 8808 mother is one of those cows that quietly goes about her business and gets the job done right. We think you will appreciate the bone in this individual along with his easy fleshing capabilities. This is a densely made bull complete with that fancy Harvester style will turn some heads!

54**ABOUND HARVESTOR 935G**

BARN 935G

March 13, 2019

SIRE: BLACK RIDGE HARVESTOR 66D

SANDY BAR IDEAL 185W 216Y

Dam: IVANHOE BLACKBIRD 60B

GLENDOR BLACKBIRD 43Z

Act BW 84 Oct.14 Wt 858 Feb.1 Wt 1165

BW 3.1 WW 50 YW 84 MK 20 TM 45 CE 2.0 MCE 9



IVANHOE BLACKBIRD 60B
Dam of lots 54 and 55

Abound 935G is the youngest bull in the pen. However, this smooth made bull doesn't give up any shape or structure that his older brothers have to offer. His mother, Blackbird 60B, has finally decided to drop us a heifer calf this year and we are excited for her to carry on the very strong maternal values of her mother.

55**ABOUND HARVESTOR 820F**

BARN 820F

March 10, 2018

SIRE: BLACK RIDGE HARVESTOR 66D

SANDY BAR IDEAL 185W 216Y

Dam: IVANHOE BLACKBIRD 60B

GLENDOR BLACKBIRD 43Z

Act BW 74 Oct.17 Wt 747 Feb.12 Wt 1228

BW 1.1 WW 42 YW 69 MK 20 TM 41 CE 6.0 MCE 11



Lot 55 - front view

820F has a bit of a story behind him as he was slightly injured in a pretty freak accident here in November of 2018. He healed up and was ready to work by spring but his development was delayed compared to his penmates. Therefore, we decided to hold him back from the sale last spring to be used if a customer had a bull go down but luckily he wasn't needed. He was far too good to just ship so we decided to keep him here for the summer and he grazed at the home yard. He is a full brother to lot 53 out of the Blackbird 60B cow who is pretty tough to fault upon appraisal. Keeping bulls over for two year olds is not something we plan to do so take advantage of this Harvester son while you can as he is likely the only 2 year old we ever sell!

BUYER'S DRAW

Brian is a really talented welder and came up with these slick and handy spouts for filling pails. They easily attach onto a hopper bin and make chores a little easier. Each lot in the sale will be entered into the draw to win one of your own!



DVAuction
Broadcasting Real-Time Auctions

**Reference
Sire**

4M ELEMENT 405

DUM 66D

February 8, 2016



POSS ELEMENT 0119

SIRE: POSS ELEMENT 215

POSS ERICA 004

SITZ UPWARD 307R

Dam: 4M BLACKBIRD 2004

RIVERBEND BLACKBIRD 4301

Act BW 74

Adj WW 900

Adj YW 1460

BW -0.8 WW 73 YW 126 MK 35 TM 71 CE 10 MCE 13

4M Element 405, who walked the pastures of Peak Dot Ranch was selected for his length and depth as well as his tremendous EPD scores to breed our heifers by AI service. They came small with lots of vigour and became very stout in a short time. His shorter gestation helps keep birth weights down but they don't give up when it really matters. We think you will be happy with the results come sale day.

56

ABOUND ELEMENT 908G

BARN 908G

February 3, 2019



SIRE: 4M ELEMENT 405

CRESCENT CREEK RITO 139C

Dam: ABOUND LASSIE 722E

HI-LOW LASSIE 71A

Act BW 82

Oct.14 Wt 936

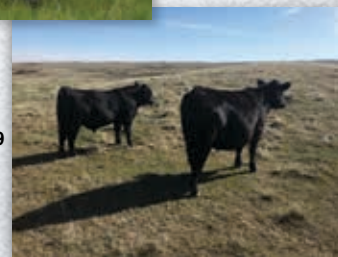
Feb.1 Wt 1398

BW 3.3 WW 64 YW 108 MK 24 TM 56 CE 3.0 MCE 8

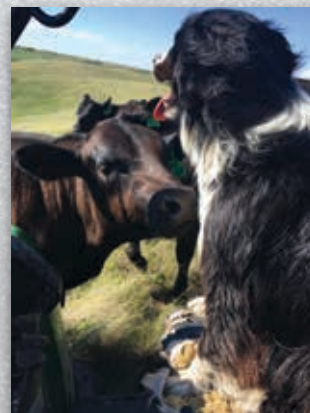


Lot 56 with Dam
August 2019

Lot 56 with Dam
Late September 2019



Game changer herd bull here! This guy is without a doubt breeder grade and will leave a serious impact in whatever program he ends up in. A standout from day one with a pretty much perfect mother with lots of power and maternal traits, as good footed as you will find anywhere and to top it all off BARN 722E did this on her first crack! Here is walking proof the cows genetically put more into the calf than the sire. The future is huge for 908G and his mother as we have plans to make this cow line our go to for power, function and style. With a 936 lb weaning weight, in one of the most demanding summers, a very respectable birth weight, as well as a balanced set of EPDs and exceptional hair coat makes him a no brainer!



57**ABOUND ELEMENT 907G**

BARN 907G

February 1, 2019

SIRE: 4M ELEMENT 405

YOUNG DALE T D 58R

Dam: IVANHOE LINDA 31X

IVANHOE LINDA 35P

Act BW 88 Oct.14 Wt 831 Feb.1 Wt 1166

BW 3.3 WW 47 YW 77 MK 18 TM 42 CE 1.0 MCE 8



907G is the result of AI breeding to a moderate birth weight bull to a cow with a fair bit of punch. This guy would do wonders for a program calving cows on grass with the added calving ease to eliminate issues early on but enough performance to get the job done come fall.

58**ABOUND ELEMENT 903G**

BARN 903G

January 29, 2019

SIRE: 4M ELEMENT 405

CRESCENT CREEK 07 EMBLAZON 62W

Dam: ABOUND BONNIE 703E

IVANHOE BONNIE 22Z

Act BW 75 Oct.14 Wt 737 Feb.1 Wt 1081

BW 1.4 WW 44 YW 76 MK 13 TM 35 CE 6.0 MCE 9



CRESCENT CREEK 07 EMBLAZON 62W
Grandsire of lot 58

A little smaller framed bull suitable for the heifer pen that shouldn't get too big too soon so you should get many years of use from this guy. We used the Element bull on our own heifers with really good results. We found them to be 10-12 days ahead of a 280 day gestation. We crossed some very powerful females resulting in bulls like lots 55 and 56 and with more calving ease oriented females to get lots 57 and 58.

59**ABOUND ELEMENT 920G**

BARN 903G

February 9, 2019

SIRE: 4M ELEMENT 405

CRESCENT CREEK RITO 139C

Dam: ABOUND POLLYANNA 710E

IVANHOE POLLYANNA 5A

Act BW 71 Oct.14 Wt 809 Feb.1 Wt 1202

BW 1.0 WW 54 YW 93 MK 21 TM 48 CE 9.0 MCE 13



ABOUND POLLYANNA 710E
Dam of lot 59

A very dense made Element son with a ton of style to him and suitable for use on heifers. These Element sons gained very well and were neck and neck with some of the power bulls when comparing ADG on their current ration. When researching 4M Element 405, he was said to have a "rapid, high octane growth" and you could see that in these calves after only a few days of age!

**Reference
Sire**

MERIT MERGER 6061D

TJL 6061D ~ February 14, 2016



GDAR INSIGHT 7201
SIRE: MERIT 77X
MERIT SOCIALITE 5084

BAR-E-L IRON WILL 32Y
Dam: MERIT M'BROOK LASS 3074
MERIT M'BROOK LASS 9534

Act BW 83	Adj WW 763	Adj YW 1344
BW 5.1	WW 56	YW 102
MK 23	TM 51	CE -2.0
MCE 11		



MERIT 77X
Sire of Merger 6061D



MERIT M'BROOK LASS 3074
Dam of Merger 6061D

Merit Merger 6061D was selected to build a female base in our herd. If you raise your own replacement heifers then look no further then a 6061D son! His calves are long sided with a little bit of added stretch and have tremendous vigour and gain. These cattle are made to cover ground and do it with a lot of pride!

60

ABOUND MERGER 923G

BARN 923G

February 10, 2019



SIRE: MERIT MERGER 6061D

RB TOUR OF DUTY 177
Dam: HI-LOW QUEEN MOTHER 16D
HI-LOW QUEEN MOTHER 67X

Act BW 98	Oct.14 Wt 920	Feb.1 Wt 1355
BW 5.6	WW 61	YW 106
MK 25	TM 56	CE -4.0
MCE 8		



HI-LOW QUEEN MOTHER 16D
Dam of lot 60

Lot 60 with Dam
August 2019



After this past breeding season, we had the misfortune of Merger 6061D getting injured to the point that it has ended his career here at Abound. Lucky for us, he was used for three seasons and has left behind some exceptional females for us to build a future on as well as some pretty interesting bulls. In particular, we believe Merger 923G is the best of them all to date. That being said, we would love to work with his new owners and retain the walking rights from April to May 2020 to carry on the Merger line in hopes of making more females to build our herd upon. 923G's dam, Queen Mother 16D, is a little different twist of pedigree here and we feel she has a lot to offer. As a heifer, she raised last year's high selling bull through this sale. 923G really does check off a lot of boxes for us. He is deep and long with a perfect foot and just an overall balanced bull that we think a lot of!

Please Note - All Abound Livestock and Ivanhoe Angus yearling bulls will return home after the sale to be semen tested before delivery. Visit with them so they can work with you to get your bull to you in a timely manner.

61**ABOUT MERGER 909G**

BARN 909G

February 3, 2019

SIRE: MERIT MERGER 6061D

SANDY BAR IDEAL 185W 216Y

Dam: IVANHOE POLLYANNA 5A

YOUNG DALE POLLYANNA 113Y

Act BW 83 Oct.14 Wt 924 Feb.1 Wt 1236

BW 2.8 WW 48 YW 84 MK 22 TM 46 CE 4.0 MCE 12



Time and time again we watch these calves hit the ground and be up trying to suck within 10 minutes of their debut. We still see this vigorous characteristic in this sire group today. These Merger sons are made to move and cover ground and 909G is a prime example of what these bulls have to offer. He is very athletic with a perfect foot and a big stride!

62**ABOUT MERGER 930G**

BARN 930G

February 18, 2019

SIRE: MERIT MERGER 6061D

YOUNG DALE T D 58R

Dam: BROOKE'S EDGE ROYAL 3X

BROOKE'S EDGE ROYAL 4T

Act BW 95 Oct.14 Wt 837 Feb.1 Wt 1237

BW 5.3 WW 45 YW 79 MK 18 TM 41 CE -6.0 MCE 5



BROOKE'S EDGE ROYAL 3X
Dam of lot 62

930G is a very stylish Merger son out of a cow that works her way to the top every year. If you raise your own replacement heifers, this is your bull! Consistent gains and length are where the money is, and these Merger sons are just that. So vigorous at birth that you may need to patch the barn walls if you calve early and the perfect fit for the outfits that calve on grass.

63**ABOUT MERGER 931G**

BARN 931G

February 19, 2019

SIRE: MERIT MERGER 6061D

SANDY BAR IDEAL 185W 216Y

Dam: IVANHOE DNA PRIDE 72B

IVANHOE DNA PRIDE 18Z

Act BW 98 Oct.14 Wt 887 Feb.1 Wt 1301

BW 6.0 WW 52 YW 90 MK 20 TM 46 CE -6.0 MCE 6



If you are looking for a pair of bulls to run together, look no further than 931G and his half brothers. Both expressing strong herd bull characteristics that it might just be surprising to see how many cows these two could cover in their prime. Very similar in style and makeup with the length and frame that is sure to add some jingle in your pockets!

Commercial Replacement Heifers

Sourced from Simmental and Angus Genetics offered through this sale

64

10 red and black Simmental heifers - sired by City View Simmentals bulls and out of straight bred Simmental and Simmental cross cows. These heifers will sell in groups of 3-5.

Rick & Bonnie Clubbe - Moose Jaw, Sk - 306 756 2211 or 306 690 6563



65

Pen of 3 straight Angus heifers from the heart of the replacement pen at Abound. They are sisters to the Angus bulls in the sale and sell only because of a very full replacement pen.

Abound Livestock - Moose Jaw, Sk - 306 631 7539



66

3 red Simmental heifers from Abound Livestock. They are out of straight bred Simmental cows in the Abound commercial program and City View Simmentals bulls.

Abound Livestock - Moose Jaw, Sk - 306 631 7539

67

6 black baldie Simm Angus heifers from Cliff Barnett. They are out of straight bred traditional Simmental cows and Ivanhoe Angus bulls.

Cliff Barnett- Moose Jaw, Sk - 306 630 7039

**Join us Monday night for pizza and hospitality then
lunch on Tuesday at 11:30!**

Thank you to our 2019 Buyers!

BAR KM CATTLE CO.
ASHLEY PATOINE
YUKE FAMILY FARMS LTD
ROY A. SMITH
DANNY & IRENE HICKS
CYPRESS FARMS LTD
RYAN BULL
ANTELOPE CREEK ENTERPRISES
BLUESTONE STOCK FARMS
KENNETH LOOS
RANDY ZAREMBA
RICHARD & KATHY RIEDER
KEN & LINDA DRYSDALE
BAR CL FARM/L&J FARMS

COTEAU HILLS LAND AND CATTLE
TREVOR BENSON & DR. BONNIE BRANDT
JACOB CARROBOURG & JANELLE BERG
JOHN LAYBOURNE
TWIN CURVES RANCH LTD
MARTIN & JESSE HIPPERT
ERIC & VALERIE WEISBECK
JERRAD SCHOLLAR
HIGH RIVER ANGUS
MATTHEW STEVENS
ALLAN FAHLMAN
HI LOW ANGUS
BMT SHORT FARMS LTD
SKYLINE SIMMENTALS

WILD ROSE FARMS
BLACKWELL CATTLE CO
KG MCLAREN FARMS LTD
FIVE M CATTLE CO
JORLA FARMS LTD
RICK & BONNIE CLUBBE
EDWARDS RANCH
JOHN WEIKUM
2 E RANCH LTD
ROY & PAM KIRBY
FOURTH SPOKE RANCH
BRIAN ARGUIN
MAVV FARMS INC

Calving Ease (CE) - The ease with which a bull's calves are born to first calf heifers. The larger EPD indicates a higher percentage of unassisted births for calves sired by that bull.

Birth Weight (BW) - Calf weight at birth adjusted to the dam's age. The larger EPD indicates a heavier average birth weight.

Weaning Weight (WW) - Weight taken between 160 and 250 days of age and adjusted to 205 days of age and to the dam's age. The larger EPD indicates a heavier average weaning weight for calves sired by that bull.

Yearling Weight (YW) - Weight taken between 330 and 440 days of age and adjusted to 365 days of age and to the dam's age. The larger EPD indicates a heavier average yearling weight for calves sired by that bull.

Maternal Calving Ease (MCE) - The ease a bull's daughters calve as first calf heifers. The larger EPD indicates a higher percentage of unassisted births for calves born to the sire's daughters.

Milk - The milk EPD is a predictor of a sire's genetic merit for milk as expressed in his daughters production, or in other words, the part of weaning weight attributed to milk genes. The larger EPD indicates heavier average weaning weights due to daughter's greater maternal ability.

Total Maternal (TM) - A bull's ability to pass on milk production and growth rate through his daughters. It predicts the total weaning (direct and maternal) that will be displayed in his daughter's offspring. It is calculated by adding half of the Weaning Weight EPD with the Milk EPD. The larger EPD indicates higher pounds at weaning.



Go to www.DVAuction.com to register for bidding and to view videos of the bulls.

