

FLADELAND LIVESTOCK
and
TWIN VIEW LIVESTOCK
BULL SALE

2023
MARCH 15

Johnstone Auction
Moose Jaw, SK
and on liveauctions.tv

FLADELAND LIVESTOCK and TWIN VIEW LIVESTOCK **BULL SALE**

2023 MARCH 15

**Johnstone Auction
Moose Jaw, SK
and on liveauctions.tv**

Sale Time: 1PM CST

**Sale Location : Johnstone Auction
Mart, Moose Jaw, Saskatchewan
4 miles west of Moose Jaw on the
Trans Canada highway.**

WATCH AND BID ONLINE

LiveAuctions.TV

TERMS AND CONDITIONS:

The terms of the sale are cash or cheque. All settlements must be made with the clerk following the sale before any cattle will be released. Disputes: Bidding will be re-opened between the parties involved in the dispute. If no further bids are made, the buyer will be the person from whom the auctioneer accepted the last bid. The auctioneer's decision on all disputes will be final.

ANNOUNCEMENTS:

All announcements made from the auction block will take precedence over the printed material matter in the catalog. Buyers are therefore cautioned to pay attention to such disclosures.

ACCIDENTS:

Although every precaution will be taken to protect the safety and comfort of the buyers, neither the owner, the auctioneer of Association assumes any responsibility in this matter and disclaims any liability, legal or otherwise, in the event of accident or loss of property.

GELBVIEH BREED AVERAGE EPDS

CE	BW	WW	YW	MK	TM	MCE
11	0.4	62	88	20	47	5

SALE DAY PHONES

Johnstone Auction Mart.....306-693-4715
Del Fladeland306-869-8123
Aaron Birch403-485-5518
Joe Barnett403-465-2805

SALE STAFF

Auctioneer, Scott Johnstone306-631-0767
Ringman, Darwin Rosso306-690-8916
Ringman, Corey Mantell306-693-4715

SALE CONSULTANTS

Peterosa Exports, Roger Peters403-828-9815
Darwin Rosso306-690-8916

FERTILITY AND SEMEN

All bulls will be semen tested prior to the sale. Sellers reserve the right to draw in herd semen on any bull in our offering at our expense.

CATALOG

This catalog can be viewed online at: fladelandlivestock.com, twinviewlivestock.com and johnstoneauction.com

Design and production by Pittman Print Media

DELIVERY:

With rising feed and fuel costs we look forward to working with you to get your bull home in a timely manner. We will do our best to get your bull as close to you as possible, if not into your yard. We will begin delivering bulls following the sale to centralized locations in the prairie provinces. If you are not able to take your bull when we are headed your way, it is the buyer's responsibility to arrange transport. Any bulls left after April 15 will be charged \$3/day. For bulls headed to Eastern Canada, British Columbia or leaving the country, we will organize necessary health testing and assist in custom travel plans up to \$200. Costs over \$200 will be paid by the buyer. We look forward to working together to get your bull home!

PHONE BIDS/SIGHT UNSEEN:

If you are unable to make the sale, but wish to make a purchase, please give us a call and we will gladly discuss your needs with you and find a bull to meet your satisfaction. Online bidding and videos of the sale bulls will be available on Liveauctions.tv

ACCOMMODATIONS:

A block of rooms has been booked at DAYS INN 306 691 5777 under Fladeland Livestock.

PRE-SALE LUNCH:

Come anytime Tuesday before the sale to view the cattle and visit. A complimentary lunch will be served on Wednesday prior to the sale.

GUARANTEE:

All cattle are guaranteed under the terms and conditions of sale as recommended by the Canadian Gelbvieh Association.

INSURANCE:

Ownership commences to the new owner as soon as the animal is sold. Loewen Agencies – Brent Loewen, 306-869-7999 will be there sale day to look after your insurance needs. All bulls returning to Fladeland Livestock or Twin View Livestock are recommended to be insured. Although every precaution will be taken to prevent injury they are not responsible if your purchase is not insured.

WELCOME

friends and fellow Cattlemen

Welcome to our fourth annual Fladeland Livestock and Twin View Livestock Bull Sale! It is our pleasure to share this group of bulls with you as you search for your next herd sire.

Our programs working together makes great sense. Our approaches to the cattle industry are very similar. We pride ourselves on creating industry leading, highly sought after Gelbvieh seed stock. We work hard to stay at the forefront of the breed then offer you the best product backed by people you can trust. We have commercial expectations and cattle that just happen to carry a registration paper. We do show cattle as a means of promotion and are extremely proud of our success in the pasture and beyond. Annually, our programs set the bar for Canadian Gelbvieh!

It'd be an honour to enjoy a cup of coffee and a visit with you! We want you to get exactly what you're after in a bull and can help you do that! We would also enjoy the opportunity to tour you through our programs at home. We believe your bull's mother is as important as any other factor in bull selection.

Give us a call and we'll see you on sale day if not before. The bulls will be at Johnstone's Monday evening and you're more than welcome to tour there right up to sale time. The professional staff at Johnstone Auction and Darwin Rosso are available as well if you have questions or you'd like another opinion.

Yours in Gelbvieh,
The Fladeland Livestock and Twin View Livestock Team





Canadian National Junior Gelbvieh Show
July 27-29th, Swift Current, SK
We'll see you there!



It is our pleasure to welcome you to our 2023 bull sale! As always, we're so grateful to our loyal customers for your continued support. The cattle are the vehicle to the people and we value the relationships our cattle have created for us more than you know. One of those great relationships is with the Fladeland family whom we have the greatest respect and admiration for. It is our pleasure to work with them!

It seems like we say something like 'what a year!' each time we write this. That feeling is definitely true this time around. We had a successful calving season and then spring brought a little more moisture than previous years. A highlight in April came from the Moose Jaw and District Chamber of Commerce when we were shocked to be selected as Business of the Year. What a privilege to be recognized by our local community! Our hay crops were certainly better than previous years and we were able to gather up enough feed even if it meant some creative work. Another highlight was being part of the Canadian Junior Gelbvieh Show in July. Summer also meant assembling females for Function and Finesse which is become a labour of love for us. Please join us here on October 13! We had a busy and very successful fall with shows and sales which is something we absolutely love.

Our life revolves around the Gelbvieh breed! 365 days a year are about these cattle! We hope you see our pride in this work as you evaluate these pages.

We like to explain our feeding beliefs because we know you compare weights from catalog to catalog like we do. We are very opposed to fat bulls! We do not creep feed at any stage of development and the only way our cattle are fed is by hand. The bulls are fed 14% bull developer pellet from Trouw Nutrition at 1.5% of body weight. They have free choice grass hay, fresh straw and chelated mineral. Although it means work for us, we know it helps us manage sensible growth and development, eliminates any disposition concerns and increases longevity in your purchase. The bulls have access to a large run and are often out doing bull things and staying active. We could make them bigger, heavier and fatter but no one wins in that scenario. If we wouldn't use a bull ourselves, he's not for sale.

As always, our entire offering is DNA parent verified, polled and colour tested where necessary and comes with genomically enhanced EPD's. This is a process where an individual's DNA is tested rather than just averaging their parents. This increases the accuracy of the EPD profile. EPD's are one small tool in the selection process but we want to offer the most accurate information to our customers as possible.

It would be our privilege to tour you through the bull pen and the entire cowherd. A bull's mother is one of our most critical selection criteria and we'd be happy to show her to you! If you can't make it to the farm, give us a call, use twinviewlivestock.com or we'd even be happy to spend time with you on a personal video tour! Each lot has a QR code that will take you to our website where you'll find more details and video. The bulls are available for viewing at Johnstone's all day March 14 and up until sale time on the 15th. Come for lunch prior to the sale and bring the family for a visit!

We look forward to talking with you soon!

Aaron & Joe



AARON BIRCH AND JOE BARNETT

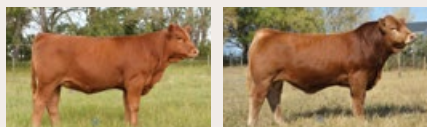
Parkbeg, Saskatchewan | twinviewlivestock.com | (403) 485-5518



Left: AWB TWIN VIEW RED CARPET 5J,
Sold to Selin Gelbvieh
Right: AWB TWIN VIEW BATON ROUGE 10J,
Sold to Brad & Mattie Hurst



Left: AWB TWIN VIEW QUEEN 34J,
Sold to Green Acres Cattle Company
Right: AWB TWIN VIEW DAISY 68J,
Sold to Cooley Farms



Left: AWB TWIN VIEW RAINBOW 110K,
Sold to Kelsey Schmitz
Right: MD MEMPHIS 141K, Reserve Sr Bull Calf
at Farmfair for MacDonell Farms



KHR GRIZZLY RED 39F

1

Red / Homozygous Polled / Purebred



AMGV1424486

RWG TRACTION 7412
MCCA CORNHUSKER RED 524C
MCCA ZIVA Z24
RID R COLLATERAL 2R
KHR 703T
KHR 533R

Mar 6/18	AWB	39F
Act BW	Adj WW	Adj YW
92	763	1209

CE	BW	WW	YW	MK	TM	MCE
16	0	65	90	21	53	8

beast of extremes and we admire his consistency. He produced our high selling bull a year ago to Selin Gelbvieh and his daughters are developing into stunning mother cows. We've told the story of Grizzly Red many times however we're confident his story is just beginning. Currently, only Twin View Livestock, Foursquare Farms and Diamond Acre Farms have access to semen. Unfortunately his dam was retired for old age before she was DNAed. This means semen can only be used by owners. **Possession of Grizzly Red will sell and only those listed as owners may have access to semen.** Why are we selling you ask? He has so much life left in him and with the structure of our breeding season, we simply can't utilize him to the extent he deserves but we will continue to use him through AI. Grizzly Red has been a turning point in our program and he can be in yours as well!

Grizzly Red! We've never owned an animal who has generated as much buzz and interest as the big man. We've received countless calls and inquiries about his availability and for good reason. He is simply unique in so many ways! To our knowledge he is the only direct Cornhusker Red offspring in Canada. At two dispersal sales in the US last fall, Cornhusker daughters were the high sellers. Truthfully, Grizz has been a surprise from day one. He came to us as a back up bull on a year we worried we were a little short on power. He stepped off the trailer, well into breeding season unfortunately, and we were blown away knowing he was not a back up plan. He was the whole plan! His show career during Covid meant virtual shows but he took the world by storm surprising us again being selected by a panel of international judges as ORB World Champion! When Grizzly's first calves came, you guessed it...surprise! They came effortlessly with exceptional vigour and developed with ideal structure. Grizz has been used successfully on a variety of females from heifers to mature cows, from moderate to large framed and he always shoots the middle. He is not a

AWB TWIN VIEW GENUINE 7K

2

Red / Homozygous Polled / Purebred

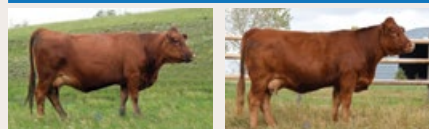


CDGV178939

MCCA CORNHUSKER RED 524C
KHR GRIZZLY RED 39F
KHR 703T
FRL FIR RIVER RANALDO 38U
VV ANATHOLIA 55A
LCR WYNN 932W

Jan 17/22	AWB	7K
Act BW	Adj WW	Adj YW
98	608	1112

CE	BW	WW	YW	MK	TM	MCE
8	2.1	68	102	24	58	2



Left: VV ANATHOLIA 55A,
Dam of Lot 2
Right: AWB BIRCH'S WYNN
105D, Maternal Sister of Lot 2



Twin View Genuine is easy to find in the pen! He's been one of Joe's top picks from a few days old. He's always carried himself with pride and presence and he knows he's a bull! With Grizzly Red on the top side and a fault free work horse as his mother, Genuine is one worthy of a second lap around the pen. We have retained a couple of his sisters and Triple S purchased another as one of the feature lots in Function and Finesse 4.0. Genuine is attractive in his muscle pattern and his red colour is so in demand. This cocky, good looking, big performance, highly maternal herd bull is one you're sure to appreciate when you see him! We genuinely mean it!



AWB TWIN VIEW VENTURE 94K ET

3

Red / Homozygous Polled / PC88



CDGV179031

SLC VELOCITY 14C
 SLC VIPER 7E
 SLC TOASTY 10C
 BNC MR RED HOT X1163
 JSJ BAHHA 35B
 DTJ L011 MISS GOLD BAR S518

Feb 16/22

AWB 94K

Act BW	Adj WW	Adj YW
ET	533	1008

CE	BW	WW	YW	MK	TM	MCE
9	0.6	57	88	25	54	6



Left: JSJ BAHHA 35B, Dam of Lot 3 & Granddam to many lots
 Right: AWB TWIN VIEW BAHHA 1H ET, Dam of Lot 5 & Full Sister to Lot 3

Twin View Venture 94K ET had his story written before he was even born. He is a direct son of the great Baha and sired by Viper making him a full brother to the dark red two year old cow we showed last fall. She topped Function and Finesse 2.0 to Classic Cattle Co and has since become an elite donor cow. Venture is super hairy, moderate in his design and patterns much the same as his awesome sister! He also has a full brother working at Milne Ranch. We believe he'll work well in the heifer pen with his ultra smooth physique and we know his daughters will be a runaway success. Birthweights and calving ease have proven to be very user friendly on this line. Venture's got a super cool look, he's really soft made and would be an excellent Venture for your next herd sire!



AWB TWIN VIEW PREAKNESS 14H ET

RS

Red / Homozygous Polled / Purebred

CDGV172067

VV YOICKS 107Y
 SA BIRCH'S WRANGLER 58A
 VV WRUFFLE ME 18W
 VV ZAKE 114Z
 AWB TWIN VIEW GAYLE 78E ET
 SA BIRCH'S GAYLE 48Z

Jan 20/20

AWB 14H

Act BW	Adj WW	Adj YW
ET	747	1237

CE	BW	WW	YW	MK	TM	MCE
5	4.1	81	119	23	64	3



Left: AWB TWIN VIEW GAYLE 78E ET, Dam of Preakness
 Right: SA BIRCH'S WRANGLER 58A, Sire of Preakness

It's so gratifying when a plan works out the way you hope. Preakness was one of those plans where the stars aligned and he combined the greatest of his parents into the high quality package he was! Preakness was raw power, maternal, muscle, middle, foot, disposition and hair and all in one. He won the People's Choice Bull Futurity in 2020 and we decided to keep him very exclusive and walked him ourselves. His dam is past National Champion, Gayle 78E. We were so proud of ourselves in 2021 when we'd made it through breeding season without a single issue until we went to pull bulls and found Preakness down with a back injury which meant his demise. He produced so consistently adding the dimension we hoped he would. One of our favourite heifers in the replacement pen is a daughter of his. These sons will be your first to access his influence.



AWB TWIN VIEW AFFIRMATIVE 19K

4

Red / Polled / PC75



CDGV178948

SA BIRCH'S WRANGLER 58A
 AWB TWIN VIEW PREAKNESS 14H ET
 AWB TWIN VIEW GAYLE 78E ET
 JRI GUNG HO 282C51
 FLAD FLADELAND FLOWER 63F
 FLAD MAY 198U

Jan 20/22

AWB 19K

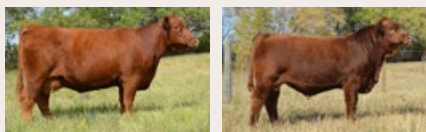
Act BW	Adj WW	Adj YW
98	701	1227

CE	BW	WW	YW	MK	TM	MCE
6	3.8	86	137	26	69	3



Left: FLAD FLADELAND FLOWER 63F, Dam of Lot 4
 Right: AWB TWIN VIEW AFFIRMED 81J, Maternal Brother of Lot 4

Twin View Affirmative 19K is one of the larger framed, most expressive power bulls in the pen and has an unreal disposition. He's one cool dude who blows performance and carcass values out of the water! He ranks in the top 1% for weaning, yearling, total maternal, carcass weight and REA. The best part? His actual data backs those numbers up. He combines the added stretch and frame from his mother cow and the mass and dimension of Preakness in an extremely valuable package. His dam came through Function and Finesse from Fladelands. Although he sells as a 75% we know he is straight Gelbvieh just like his very popular maternal brother that sold last year to Fairhaven Farms. Affirmative will likely find you in the pen for a scratch!



Left: AWB TWIN VIEW BAH 1H ET, Dam of Lot 5 & Full Sister to Lot 3

Right: AWB TWIN VIEW CLASSIC 78K, Maternal Brother to Lot 5, Bull Futurity Winner's Choice Bull

Twin View Bold Ruler! Phenotypically, his commanding presence is undeniable with his dark red hair coat, massive middle third, elite foot and leg design all in an extremely attractive silhouette. Genetically, Bold Ruler is the next step in combining some of the greatest cows in the breed; Baha 35B, Baha 1H and Gayle 78E to name a few. He is the first calf crop from Preakness who won the 2020 Canadian Bull Futurity. Bold's two year old dam is extremely special and one rank among the best we've created. Bold Ruler's maternal brother was selected by AKS Gelbvieh at the Futurity. There's been rumbling in the breed we need to make Gelbvieh cattle softer and with more shape. We aren't sure we've come across a bull in this breed with as much natural dimension and softness. It was a pleasure to campaign him against other breeds where he was admired simply as being a good bull rather than 'good for a Gelbvieh'. It's been some time since a bull calf has been so dominant as Bold Ruler! His show record was unparalleled in 2022 being undefeated in his division, Grand Champion at AgEx and Reserve Champion at Farmfair which isn't easy to do as a calf. Terms will be announced as we near sale time but we can assure you Bold Ruler will be utilized here through AI and we would be willing to assist in his future show career should his new owners be interested. Bold Ruler! You'll be hearing this name for years to come!



AWB TWIN VIEW BOLD RULER 20K ET

5

Red / Homozygous Polled / Purebred



CDGV179026

SA BIRCH'S WRANGLER 58A

AWB TWIN VIEW PREAKNESS 14H ET

AWB TWIN VIEW GAYLE 78E ET

SLC VIPER 7E

AWB TWIN VIEW BAH 1H ET

JSJ BAH 35B

Jan 21/22		AWB 20K
Act BW	Adj WW	Adj YW
ET	644	1223

CE	BW	WW	YW	MK	TM	MCE
7	2.3	76	114	26	64	4

AWB TWIN VIEW CHROME 61K

6

Red / Homozygous Polled / Purebred



CDGV178991

SA BIRCH'S WRANGLER 58A

AWB TWIN VIEW PREAKNESS 14H ET

AWB TWIN VIEW GAYLE 78E ET

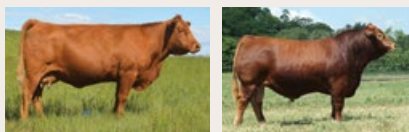
JDPD ASTRO 407S

FLAD FLADELAND FLICKER 7F

FLAD FLADELAND DOUBT FIRE 107D

Feb 1/22		AWB 61K
Act BW	Adj WW	Adj YW
86	646	1148

CE	BW	WW	YW	MK	TM	MCE
8	3.7	80	123	25	65	4



Left: FLAD FLADELAND FLICKER 7F, Dam of Lot 6

Right: JDPD ASTRO 407S, Grandsire of Lot 6

Twin View Chrome 61K is just as shiny as his name implies and you're going to love him when you get your eyes on him! He is very typical of the Preakness progeny with a massive and explosive middle third and muscle design and as much length of side as any. Chrome ranks in the top 3% of the breed for weaning and yearling values and has the actual performance to back it up. His mother came from Fladelands and she is beautiful in every sense of the word! We've seriously considered moving her to the donor pen and can't wait to see where she leads us down the road. We have a three year old maternal sister to Chrome who is really an ideal female. We don't make a habit of keeping twins but Chrome is a special individual with a great deal to offer and we're sure you'll agree. Go ahead and get chromed up!



REFERENCE *Sire*

Valhalla is a bull we raised and there was never any question he would be our next herd bull. He was the mass, muscle and bone we were looking for and continue to believe we can use more of in this breed. It sure didn't hurt that his mother is Baha and Chico brought some outcross on the top side of the pedigree. He's a power bull in every sense of the word and we're okay with that because, like you, we sell feeder cattle by the pound. We believe we run the risk of making cattle too small in this industry and losing the pay weight we all need. Valhalla cattle are more... more frame, more grow and more mass. His daughters are every bit as impressive as the sons and we're excited for another large group of Valhalla calves this year.

AWB TWIN VIEW VALHALLA 45H ET

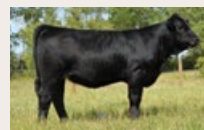
Heterozygous Black / Homozygous Polled / Purebred

CDGV172092

ELK CK CRAZY HORSE 138P
JOB DANELL TD CHICO LOCO 28Y
 MCFG TD MYA 210T
 BNC MR RED HOT X1163
JSJ BAH 35B
 DTJ L011 MISS GOLD BAR S518

Jan 30/20		AWB 45H
Act BW	Adj WW	Adj YW
ET	857	1443

CE	BW	WW	YW	MK	TM	MCE
6	4.6	83	127	15	57	2



Left: JSJ BAH 35B, Dam of Valhalla
 Right: AWB TWIN VIEW ESSENCE 89K, Daughter purchased by PTM Livestock



Lot 7

AWB TWIN VIEW RAGNOROK 21K

Heterozygous Black / Homozygous Polled / Purebred



CDGV178949

JOB DANELL TD CHICO LOCO 28Y
AWB TWIN VIEW VALHALLA 45H ET
 JSJ BAH 35B
 AWB BIRCH'S THE BOXER 21D
AWB TWIN VIEW SUNGOLD 47F
 ZTM MCCOY 66W SUNGOLD 126A

Jan 21/22		AWB 21K
Act BW	Adj WW	Adj YW
85	653	1122

CE	BW	WW	YW	MK	TM	MCE
8	2.2	64	90	19	51	2



Left: AWB TWIN VIEW SUNGOLD 47F, Dam of Lot 7
 Right: AWB TWIN VIEW CROW WARRIOR 43H, Maternal Brother of Lot 7

Twin View Ragnorok 21K is a stout, masculine and early maturing Valhalla son. He is a power bull from tip to tail and we like him so much we actually had him in the show pen as a potential member of our show team. This homo polled and hetero black rascal is rugged and big boned with an awesome Boxer daughter behind him. She is 3 for 3 on raising herd bulls with other sons working for the Hlavka and Melynk families. If you sell your calves by the pound then Ragnorok is the man for the job!



Lot 8

AWB TWIN VIEW THOR 74K

Homozygous Black / Homozygous Polled / Purebred



CDGV178987

JOB DANELL TD CHICO LOCO 28Y
AWB TWIN VIEW VALHALLA 45H ET
 JSJ BAH 35B
 JM DECEPTICON 41D
KCC GLAMORE
 KCC KERINNESS SPICE GIRL 97A

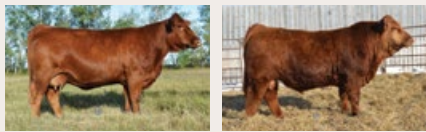
Feb 8/22		AWB 74K
Act BW	Adj WW	Adj YW
94	679	1105

CE	BW	WW	YW	MK	TM	MCE
10	0.3	62	84	17	48	4



Left: KCC GLAMORE, Dam of Lot 8
 Right: JM DECEPTICON 41D, Grandsire of Lot 8

Twin View Thor 74K is another impressive Valhalla son who's long bodied and maybe smoother made than his brothers. He's not extreme in any way but did ratio 104 at weaning so there's plenty of performance from birth to weaning. We purchased his mother through Function and Finesse from our long time friends, the Ness family. She's a moderate, attractive daughter of the Decepticon bull that we really admire. Thor is homo polled and homo black making him just as consistent as his mama!



Left: AWB TWIN VIEW SUGAR 26F, Dam of Lot 9 & 10

Right: AWB TWIN VIEW PENDLETON 21J ET, Maternal Brother of Lot 9 & 10

Twin View Ragnar 111K is special on so many levels. Anytime a mother cow like Sugar with National and World titles to her name lays down to calve, you take notice. Add to that she was carrying one of the first services to our new herdsire, Valhalla, and you really sit up! Ragnar carries some of the most influential and powerful blood we can provide and he does it exceptionally well! He's one of the longest bodied bulls in the pen, supremely sound and we'd be sure to keep every daughter we could. They will be elite! Ragnar was Reserve Junior Bull calf at Farmfair and Division Champion at Agribition but we feel his best days are ahead. We'd love to be a part of his show career should that be of interest. It's difficult to express in pictures just how wide and stout made he is....seeing is believing! We will be watching closely as he charts his own path and are confident huge dividends will follow Twin View Ragnar!



AWB TWIN VIEW RAGNAR 111K

9

Red / Homozygous Polled / Purebred



CDGV178942

JOB DANELL TD CHICO LOCO 28Y

AWB TWIN VIEW VALHALLA 45H ET

JSJ BAH 35B

AWB BIRCH'S THE BOXER 21D

AWB TWIN VIEW SUGAR 26F

COX A LITTLE BIT OF SUGAR 24A

Mar 5/22	AWB 111K		
Act BW	Adj WW	Adj YW	
97	725	1253	

CE	BW	WW	YW	MK	TM	MCE
12	4.1	75	112	21	58	6

AWB TWIN VIEW HUSTLE 37K ET

10

Red / Homozygous Polled / Purebred



CDGV179021

STON STON CRAZY BULL 1C

AWB TWIN VIEW CROWFOOT 59E

VV MISS TRUFFLE 66C

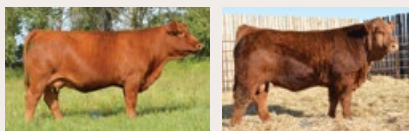
AWB BIRCH'S THE BOXER 21D

AWB TWIN VIEW SUGAR 26F

COX A LITTLE BIT OF SUGAR 24A

Jan 24/22	AWB 37K		
Act BW	Adj WW	Adj YW	
ET	662	1035	

CE	BW	WW	YW	MK	TM	MCE
15	-1.7	63	87	23	55	9



Left: AWB TWIN VIEW SUGAR 56H, Full Sister of Lot 10

Right: AWB TWIN VIEW CROWFOOT 59E, Sire of Lot 10

Twin View Hustle 37K ET has lit up our radar all year! He's royally bred and is the result of best laid plans coming together. He comfortably ranks as the best Crowfoot son we've produced and his mother is none other than the exceptionally sweet, Sugar! She has progeny spreading across the continent with great success. Hustle is hairy, big topped, superbly sound and good footed with big volume. We absolutely would have campaigned Hustle last fall had he not lost the end of his tail. His EPD profile is extremely balanced and he ranks above average in every trait. Hustle excites us so much we are going to maintain in an herd semen interest and plan to use him ourselves. We'd be keeping all of him if he wasn't quite as related to so much of our herd as he is. We love that he should calve like a hot dam but not give up stretch and frame often lost with calving ease value as high as his. He's awesome! Hustle up!





MCCA GUNNER 947G

RS

Red / Homozygous Polled / PC88

AMGV1443537

FMGF BLUE'S IMPACT 001X
GHGF LONE STAR D027
 VRT LAZY TV MS CURVE B027
 JMDS MR REV
MCCA CLEMENTINE 5147C
 DCH HILLE A147

Feb 19/19		AWB 947G
Act BW	Adj WW	Adj YW
87	854	1421

CE	BW	WW	YW	MK	TM	MCE
11	1.2	87	137	20	63	4



Left: MCCA CLEMENTINE 5147C, Dam of Gunner
 Right: GHGF LONE STAR D027, Sire of Gunner

We are constantly on the lookout for new and unique genetics. While Aaron was in Denver with Mayweather, he came across Gunner and appreciated his distinctive profile and style. When the opportunity came to buy a small semen pack, we incorporated him into our breeding plans. We have a daughter in the replacement pen who is a real beauty with a bright future. Gunner really clicked on some cows including the matings that resulted in lots 11 and 12.



AWB TWIN VIEW MARTYR 48K

11

Red / Homozygous Polled / Purebred



CDGV178965

GHGF LONE STAR D027
MCCA GUNNER 947G
 MCCA CLEMENTINE 5147C
 LCR DILLINGER 908A
AWB TWIN VIEW GYPSY 215E
 AWB BIRCH'S GYPSY 42R

Jan 28/22		AWB 48K
Act BW	Adj WW	Adj YW
81	609	1106

CE	BW	WW	YW	MK	TM	MCE
14	-0.2	66	96	21	54	7



Left: AWB TWIN VIEW GYPSY 215E, Dam of Lot 11, Granddam of Lot 17
 Right: LCR DILLINGER 908A, Grandsire of Lot 11

Twin View Martyr 48K offers a little different pedigree twist with an elite EPD profile which ranks him above average in every growth and maternal category and in the top 1% for marbling. His mother is a really functional, moderately constructed mother cow with a great udder. We have two big time maternal sisters to Martyr here including the dam of lot 17. His granddam was a three time Dam of Distinction who produced well into her teens. Martyr began at just 81 pounds and he's so smoothly built making him a candidate for the heifer pen. You'll want to take a close look at this homo polled prospect if you've got heifers to breed or keep some of your own heifers. Longevity and maternal traits are bred in!



AWB TWIN VIEW SNIPER 90K

12

Red / Homozygous Polled / Purebred

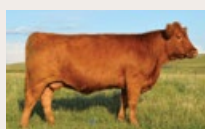


CDGV179000

GHGF LONE STAR D027
MCCA GUNNER 947G
 MCCA CLEMENTINE 5147C
 RWG TOTALLY-EXPOSED 7918 ET
SA BIRCH'S RED 26Z
 SA BIRCH'S RED 4X

Feb 16/22		AWB 90K
Act BW	Adj WW	Adj YW
94	636	1070

CE	BW	WW	YW	MK	TM	MCE
10	-0.3	67	100	24	57	4



Left: SA BIRCH'S RED 26Z, Dam of Lot 12
 Right: AWB BIRCH'S RED 6B, Maternal sister of Lot 12

Twin View Sniper 90K likely won't be the first bull to grab your attention in the pen but we promise he'll hold you once you find him. His mother has been a standby here for years becoming a four time Dam of Merit. We have a really beautiful sister to Sniper here and others have went to work at Covington Gelbvieh in Colorado, Severtson Land and Cattle and Twin Bridge Farms. Sniper is a smooth made, soundly designed rascal with an epic side profile who will make you a lot of trouble free money for years to come!



**AWB BIRCH'S
NATALIE 22Z**
Dam of Lot 13 & 14,
Granddam of Lot 20



JLSL APOLLO
Sire of Lot 13 & 14



Lot 13



**AWB TWIN VIEW
MAYWEATHER 39F ET**
Maternal Brother to Lot
13 & 14, Sire of Lot 20



**AWB TWIN VIEW
NATALIE 25J ET**
Full Sister of
Lot 13 & 14



Lot 14

AWB TWIN VIEW MAVERICK 14K ET

13

Heterozygous Black / Polled / Purebred



CDGV179022

JDPD TIME TRAVELER 450X

JLSL APOLLO

JLSL PHOENIX

CK HUSTLER 17T

AWB BIRCH'S NATALIE 22Z

RPS X-GAL 128X

Jan 19/22		AWB 14K
Act BW	Adj WW	Adj YW
ET	544	1017

CE	BW	WW	YW	MK	TM	MCE
10	1.8	63	88	12	43	4

AWB TWIN VIEW MCCOY 30K ET

14

Heterozygous Black / Polled / Purebred



CDGV179024

JDPD TIME TRAVELER 450X

JLSL APOLLO

JLSL PHOENIX

CK HUSTLER 17T

AWB BIRCH'S NATALIE 22Z

RPS X-GAL 128X

Jan 23/22		AWB 30K
Act BW	Adj WW	Adj YW
ET	587	1022

CE	BW	WW	YW	MK	TM	MCE
12	1.4	63	90	12	43	5

Twin View Maverick 14K and Twin View McCoy 30K are a pair of flush mates from the influential and elite, Birch's Natalie 22Z. Natalie is one of the most prolific females in the breed and it's an honour for us that she carries our tattoo. She is of course the dam of Mayweather and a number of females in our own herd. Their full sister sold to Braylen Blake and was Senior Calf Champion at Agribition in 2021. Natalie now resides at Diamond Z where she's continuing her success. If fertility and consistency in a moderate frame are high on your selection criteria then you'll want to closely evaluate this pair of brothers. They are extremely similar in so many ways right down to being hetero black and polled. McCoy lucked out with a little better recip mother but they've evened out now. McCoy and Maverick are both so balanced and smooth made and we believe there's huge opportunity in letting them work together. Imagine the consistency in your calf crop and all that is possible with Maverick and McCoy at work!

**AWB TWIN VIEW TORCH 6K****15**

Red / Homozygous Polled / Purebred



CDGV178938

DDGR RESILIENT 275D

AWB TWIN VIEW GUSTO 49G ET

JSJ BAH 35B

OWEN BIRCH'S RICCO 154W

AWB BIRCH'S RAINBOW 177Z

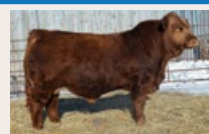
AWB BIRCH'S RAINBOW 30U

Jan 16/22

AWB 6K

Act BW	Adj WW	Adj YW
79	620	1011

CE	BW	WW	YW	MK	TM	MCE
13	1.9	72	101	20	56	8



Left: **AWB BIRCH'S RAINBOW 177Z**, Dam of Lot 15
 Right: **AWB TWIN VIEW GUSTO 49G ET**, Sire of Lot 15

Twin View Torch 6K is the only Gusto son we have this year but he's a high quality bull backed by an outstanding mama cow. His dam comes from the Rainbow family and has a history of short gestation length and light birth weights. Mating her to Gusto with his power provided a nice balance of all traits in Torch. His maternal brothers have sold to North Vale Acres and Jensen Ranch in North Dakota and we have flushed a maternal sister and his grand dam. Torch is one of the longest sided bulls in the set and he's homo polled by parentage.

**AWB TWIN VIEW DRAKE 40K****16**

Red / Homozygous Polled / Purebred



CDGV178959

SLC OUTBACK 142X

BLB GOODVIEW PLD DRAKE

BLB GOODVIEW PLD MAXINE 10Z

AWB BIRCH'S THE BOXER 21D

AWB TWIN VIEW LEXXUS 22H

FLAD LEXXUS 128X

Jan 25/22

AWB 40K

Act BW	Adj WW	Adj YW
63	623	1036

CE	BW	WW	YW	MK	TM	MCE
16	-3.2	52	61	24	50	9



Left: **AWB TWIN VIEW LEXXUS 22H**, Dam of Lot 16
 Right: **BLB GOODVIEW PLD DRAKE**, Sire of Lot 16

Twin View Drake 40K is named after his daddy because he's as close to a carbon copy as we could make. Drake worked so well here and he's still running at MacDonell Farms. In fact, both his sire and grandsire are still breeding cows at seven years of age! Old Drake ranks among the most sure fire calving ease bulls we've used and that's obvious in 40K who started at just 63 pounds and ranks in the top 10% for calving ease and top 3% for birth weight. Like daddy, he's moderate framed and is designed to breed heifers his entire career without getting too big. His mother is another of our beautiful Boxer daughters back to the Lexxus family. We've got big plans for her down the road! An added bonus to Twin View Drake 40K will be his daughters. Boxer and Drake...nothin' but net!

**DCHD GBG HIGH CALIBER 161H****RS**

Red / Homozygous Polled / Purebred

AMGV1497503

DDGR INNOVATION 120C

DCHD GBG EXCALIBUR 070E

DCHD GOLDEN BUCKLE GELV 070W

CCRO CAROLINA EXCLUSIVE 1230Y

DCHD GOLDEN BUCKLE GELV 161B ET

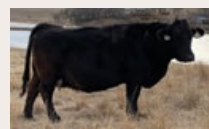
DCHD GOLDEN BUCKLE GELV 031T

Apr 11/20

AWB 161H

Act BW	Adj WW	Adj YW
78	711	1122

CE	BW	WW	YW	MK	TM	MCE
16	-1.5	68	95	18	51	8



DCHD Golden Buckle Gely 161B ET, Dam of High Caliber

REFERENCE Sire

High Caliber is one of newest sire acquisitions from the Golden Buckle program. We work hard to source new and outcross pedigrees but they have to come from the right people. We consider the Dockter family to be among the most humble, kind and genuine people in the industry! High Caliber is exactly what they told us he was and he's proven to be a prolific breeding bull who calves really well. We were surprised the shape and dimension he sired in his calves for a bull with as much calving ease as him. As an added bonus his pedigree allows us to use him on every heifer on the farm and he's got a some big time carcass numbers as well. He comes from one of their top cow families and it's an impressive cowherd to earn that title! You'll be seeing a lot more from Caliber moving forward!

AWB TWIN VIEW GUNS LOADED 73K

17

Red / Homozygous Polled / Purebred



CDGV178986

DCHD GBG EXCALIBUR 070E
DCHD GBG HIGH CALIBER 161H
 DCHD GOLDEN BUCKLE GELV 161B ET
 AWB BIRCH'S THE BOXER 21D
AWB TWIN VIEW GYPSY 34H
 AWB TWIN VIEW GYPSY 215E

Feb 8/22		AWB 73K
Act BW	Adj WW	Adj YW
72	630	1082

CE	BW	WW	YW	MK	TM	MCE
15	-0.6	65	91	20	52	8



Left: AWB TWIN VIEW GYPSY 34H, Dam of Lot 17, Sister of Lot 11
 Right: AWB BIRCH'S THE BOXER 21D, Grand sire of many lots



Twin View Guns Loaded 73K comes from the first calf crop of our newest calving ease sire, High Caliber. Caliber did exactly what we hoped he would and then some! Guns Loaded started out at just 72 pounds and then developed an impressive hip shape and overall width. He's moderate framed and won't be a huge bull giving you the chance to use him on heifers his entire career. His mother comes from the Gypsy cow family and back to The Boxer. His maternal granddam raised the lot 11 bull. A red calving ease option with a marbling EPD in the top 1% is rare and hard to come by. Guns Loaded will have your back!

AWB TWIN VIEW MARKSMAN 31K

18

Red / Polled / Purebred



CDGV178954

DCHD GBG EXCALIBUR 070E
DCHD GBG HIGH CALIBER 161H
 DCHD GOLDEN BUCKLE GELV 161B ET
 AWB BIRCH'S THE BOXER 21D
LML EMMA 8H
 LML 16X EMMA 16E

Jan 23/22		AWB 31K
Act BW	Adj WW	Adj YW
63	642	1064

CE	BW	WW	YW	MK	TM	MCE
18	-1.9	60	77	20	50	10



Left: LML EMMA 8H, Dam of Lot 18
 Right: LML 16X EMMA 16E, Granddam of Lot 18



Twin View Marksman is another obvious choice for breeding heifers. He had a 63 pound start up but still offers huge maternal value and some grow. When we select heifers for Function and Finesse we always find some we can't live without. We really didn't need another Boxer daughter but when we saw Marksman's mother we had to have her! She's from the productive Emma cow family and absolutely beautiful! If Marksman is any indication, she was a wise investment. Typical of High Caliber cattle, he won't be a huge bull making him even more valuable as your next calving ease sire.

AWB TWIN VIEW RED HOT 117K

19

Red / Homozygous Polled / Purebred



CDGV179017

DCHD GBG EXCALIBUR 070E
DCHD GBG HIGH CALIBER 161H
 DCHD GOLDEN BUCKLE GELV 161B ET
 FRL FIR RIVER CROSBY 806A
AWB TWIN VIEW MACY 97G
 AWB BIRCH'S MACY 37A

Mar 11/22		AWB 117K
Act BW	Adj WW	Adj YW
98	594	1105

CE	BW	WW	YW	MK	TM	MCE
10	1.6	66	96	22	54	4



Left: AWB TWIN VIEW MACY 97G, Dam of Lot 19
 Right: AWB TWIN VIEW RED CARPET 5J, Maternal Brother of Lot 19



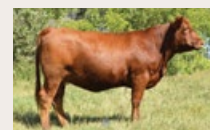
Twin View Red Hot 117K is the youngest bull in the pen but gives up nothing to his counterparts. He's got more jam than the other High Caliber sons coming from the maternal side of his pedigree. Our lead off bull last year was Red Hot's maternal sister selling to Selin Gelbvieh. Ask Wayne and Lois about Red Carpet! To make it more interesting his mother is a maternal sister to The Boxer. The daughters Red Hot leaves behind should be tremendous mother cows and his steers will have plenty of pay weight too. We suspect Red Hot could be among the buys of the day!



AWB BIRCH'S
GRACE 0203Y
Granddam of Lot 20



AWB BIRCH'S
GRACE 178D
Dam of Lot 20



AWB TWIN VIEW
GRACE 48H
Maternal Sister of Lot 20



AWB TWIN VIEW
MAYWEATHER 39F ET
Sire of Lot 20

AWB TWIN VIEW FAST TRACK 58K

20

Red / Homozygous Polled / PC88



CDGV178973

AWB BIRCH'S THE BOXER 21D
AWB TWIN VIEW MAYWEATHER 39F ET
AWB BIRCH'S NATALIE 22Z
VV WILLY WONKA WILL 44W
AWB BIRCH'S GRACE 178D
AWB BIRCH'S GRACE 0203Y

Jan 31/22	AWB 58K	
Act BW	Adj WW	Adj YW
84	670	1169

CE	BW	WW	YW	MK	TM	MCE
13	0.9	71	101	18	54	6

Twin View Fast Track is the only Mayweather son on offer this year but we believe he could be the best one we've had thus far. Mayweather has bred so true north and south of the border! No matter how you choose to appraise him, Fast Track checks all the boxes and comes with all the bells and whistles! By the numbers, Fast Track excels rating way above average for calving ease, performance and marbling. He started at just 84 pounds then boasted a weaning ratio of 102. His mother is an impressive female whose production record speaks for itself. She has daughters at Diamond Acres and MacDonell Farms as well as a son at P&R. We believe Fast Track has a big time future and we're sure he'll create massive pay weight. Fast Track is the real deal!

Thank You to our LOYAL CUSTOMERS IN 2022

Kurtis & Celine Hicks
Bertschy Family
Selin Gelbvieh
Brad & Matti Hurst
Noreen Fenske
Brittain Farms
Cooley Farms of Windsor
Cherylee Melnyk

Fairhaven Farms Ltd.
Dean Martens
A & E Lambert Farms
Diamond Acre Farms Ltd.
Darcy Hanna
Eldor Ranch
Stonegate Farm
Covington Gelbvieh

Guymon Livestock
Hillsdown Gelbvieh
PTM Livestock
Diamond Z Livestock
Triple S Cattle
Kelsy Schmitz
Koziak Land & Cattle
Milne Ranch



From all of us at Fladeland Livestock, welcome to the 2023 bull sale. Once again, we are teaming up with our good friends at Twin View Livestock bringing you an excellent set of two year old and yearling bulls.

As you can see, we have a few less bulls on offer this year due to the grass, water and hay shortage but the quality of these bulls is very deep.

2022 brought many exciting achievements for our family. The boys brought home league winning trophies and banners in hockey and baseball. They also had huge success in the show ring at 4H and jackpot shows they attended, especially with their steer "Kevin". Such a great experience for them meeting many new friends along the way and learned that teamwork will take you to great places. We were honored to win 2022 National Grand Champion Bull with Fladeland Hawkeye 2H at Canadian Western Agribition.

Grandma Gertie celebrated a milestone birthday turning 100 years old on November 15. We had a great time celebrating with many family and friends from near and far.

If you have any questions regarding the bulls or want to come and see them in person before the sale, call Del at 306-869-8123. Find us on Facebook or at www.fladelandlivestock.com to check out the videos of the bulls. Once again, you can bid online on LiveAuctions.tv.

Thank you for your past, present and future support.

The Fladeland Family



THE FLADELAND FAMILY

Gladmar, Saskatchewan, Del (306) 869-8123, fladelandlivestock.com

**FLAD FLADELAND GRONK 23G ET****RS**

CDGV170218

Red / Homozygous Polled / Purebred

RWG WAR ADMIRAL 2528
 RWG RIGHT COMBINATION 5506
 SLC LORA 164Y
 JDPD ASTRO 407S
 FLAD FLADELAND SPARKS FLY 29Z
 FLAD SHILOW 83S

May 4/19		FLAD 23G
Act BW	Adj WW	Adj YW
94	874	1401

CE	BW	WW	YW	MK	TM	MCE
7	2.5	69	99	15	50	2

**FLAD FLADELAND GROVER 102G****RS**

CDGV171283

Red / Homozygous Polled / Purebred

VV ZAKE 114Z
 FLAD FLADELAND PAINKILLER 123C ET
 FLF BEACH GIRL 110P
 LCR WARNOCK 612W
 FLAD FLADELAND BAYWATCH 41B
 FLAD STRAWBERRY 28S

May 16/19		FLAD 102G
Act BW	Adj WW	Adj YW
98	683	1182

CE	BW	WW	YW	MK	TM	MCE
5	4.9	71	105	24	60	1

**RWG GREEN LIGHT 9411 ET****RS**

CDGV170348

Black / Homozygous Polled / Purebred

RWG RIGHT COMBINATION 5506
 RWG EXACT COMBINATION 7409
 RWG HADIE 350S
 BEAS 2806Z
 RWG KITTY'S DREAM 6526
 RWG ROXY KITTY X 0301

Apr 3/19		RWG G411
Act BW	Adj WW	Adj YW
83	799	1281

CE	BW	WW	YW	MK	TM	MCE
9	2.5	77	104	26	64	6

LRSF LRL DEWALT F148**RS***Red / Homozygous Polled / PC75**AMGV1423836*

JRI TOP PRODUCER 282Z3
DCSF POST ROCK POWER BUILT 37B8
 DCSF POST ROCK WILMA 298Z8 ET
 RUP RUPPLE YUKON 301P
LRSF NELLIE C62
 LRSF NELLIE Y134

Feb 19/18		LRSF F148
Act BW	Adj WW	Adj YW
81	773	1252

CE	BW	WW	YW	MK	TM	MCE
16	-2.3	62	89	24	55	10

**FLAD FLADELAND PAINKILLER 123C ET****RS***Red / Homozygous Polled / Purebred**CDGV157185*

FRL FIR RIVER RANALDO 38U
VV ZAKE 114Z
 SLC DEBBIE 209S
 FLF BEACH BOY 39M
FLF BEACH GIRL 110P
 FLF LAURA 132K

Feb 22/15		FLAD 123C
Act BW	Adj WW	Adj YW
	789	1412

CE	BW	WW	YW	MK	TM	MCE
7	3.1	66	94	22	55	4

Maternal grandsire to several lots.



**FLAD FLADELAND JOE 3J****3J**

CDGV178091

Black / Polled / Purebred

PHG DOMINATOR D78

FLAD FLADELAND FORGED IN FIRE 73F ET

TIP MISS ANGELA 93W

FLAD FLADELAND BLACK EYE 93B

FLAD FLADELAND GARTER 128G

FLAD FLADELAND CRUDEBEHAVIOR 8C

Apr 24/21		FLAD 3J
Act BW	Adj WW	Adj YW
61	543	

CE	BW	WW	YW	MK	TM	MCE
16	-2.2	51	73	18	44	6

This is our one and only black calving ease bull we have this year. We feel 3J will be a great option to breed heifers. He is smooth made with a modest 65lb birth weight and out of a first calver. His sire, Fladeland Forged in Fire 73F ET, was used successfully on heifers.

**FLAD FLADELAND JAKE BRAKE 6J****6J**

CDGV178094

Red / Polled / PC88

DCSF POST ROCK POWER BUILT 37B8

LRSF LRL DEWALT F148

LRSF NELLIE C62

FLAD FLADELAND PAINKILLER 123C ET

FLAD FLADELAND GINA 178G

FLAD FLADELAND COLD ONE 75B

Apr 26/21		FLAD 6J
Act BW	Adj WW	Adj YW
67	561	1088

CE	BW	WW	YW	MK	TM	MCE
13	-0.9	55	79	22	50	8



FLF Beachgirl 110P Great
Grand Dam of FLAD 36J

Here is our favorite LRL Dewalt F148 son this year. Fladeland Jake Brake 6J is one we feel will work good on both heifers and cows. He has a low 67lb birth weight along with a good shot of calving ease coming from Dewalt and a strong maternally pedigree from the Painkiller line. His dam, FLAD 178G has a nice udder and teat size.

**FLAD FLADELAND JACK 11J****11J**

CDGV178098

Red / Polled / Purebred

PHG MR. WIZARD W27

RWG FIRE & ICE 1604

VG VALLEY MISS 56R

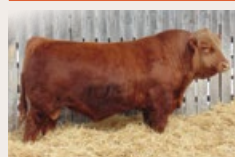
FLAD FLADELAND GUNPOWDER 40Y

FLAD FLADELAND FLIRT 4F

FLAD FLADELAND SADIE 28X

Apr 28/21		FLAD 11J
Act BW	Adj WW	Adj YW
73	568	1080

CE	BW	WW	YW	MK	TM	MCE
10	0.6	51	70	23	48	3



Fladeland Element 21E Ma-
ternal brother to FLAD 4F

11J is a darker red bull with good length and depth of body and is loose made. He will add hair, fleshing ability and maternal values. His dam, FLAD 4F is a maternal sister to Fladeland Element 21E who has done a job here and also at Goodview Gelbvieh. A maternal brother sold to Ritters in last years sale.

FLAD FLADELAND JUSTIN 12J**12J**

Red / Polled / PC88

CDGV178099

DCSF POST ROCK POWER BUILT 37B8

LRSF LRL DEWALT F148

LRSF NELLIE C62

FLAD FLADELAND PAINKILLER 123C ET

FLAD FLADELAND GIN 51G

FLAD FLADELAND STUBBY 51B

Apr 29/21		FLAD 12J
Act BW	Adj WW	Adj YW
59	548	

CE	BW	WW	YW	MK	TM	MCE
15	-2.6	54	76	23	50	8

Another smooth, low 59lb birth weight, calving ease prospect sired by Dewalt. 11J is moderate, good haired and is also out of a first calving Painkiller daughter which makes him similar in his design and pedigree as his brother FLAD 6J.

**FLAD FLADELAND JERRY 27J****27J**

Red / Polled / Purebred

CDGV178107

WGG JUST GET-N-GO 90J

JSJ ELITE 22E

JSJ BEAUTY 6B

FLAD FLADELAND PAINKILLER 123C ET

FLAD FLADELAND BABY DUCK 211G

FLAD DJW FINE WINE 89W

May 3/21		FLAD 27J
Act BW	Adj WW	Adj YW
57	569	1087

CE	BW	WW	YW	MK	TM	MCE
16	-2.2	55	75	20	48	6



FLAD DJW Fine Wine
89W Grand Dam of 27J

I can't say enough good things about the quality of the sons of JSJ Elite 22E and how popular they were in past sales for us. FLAD 27J will be no exception. He boasts a 57lb birth weight and is designed to be heifer friendly without sacrificing performance.





FLAD FLADELAND JOHN WAYNE 36J

36J

Red / Homozygous Polled / Purebred

CDGV178112

RWG RIGHT COMBINATION 5506
FLAD FLADELAND GRONK 23G ET
 FLAD FLADELAND SPARKS FLY 29Z
 FLAD FLADELAND PAINKILLER 123C ET
FLAD FLADELAND EVIDENCE 1E
 FLAD FLADELAND BREW 5B

CE	BW	WW	YW	MK	TM	MCE
10	2	61	84	16	46	3

May 6/21		FLAD 36J
Act BW	Adj WW	Adj YW
83	569	1066



FLAD 5B Granddam of 36J



FLAD 11F Right Combination daughter

Each year we have a sale highlight and this year it is Fladeland John Wayne 36J. We feel 36J will compliment any program. He is the darkest bull in the pen, he is stout, deep ribbed, and is very sound and correct. His dam is a young functional cow with a great udder and has a promising future. If you go back one more generation you will find his maternal granddam FLAD Brew 5B, who has been a consistent producer with a proven track record. Look for John Wayne to raise beautiful females. **Retaining 50% Semen Interest.**



FLAD FLADELAND JERRICO 39J

39J

Red / Polled / PC75

CDGV178115

WGG JUST GET-N-GO 90J
JSJ ELITE 22E
 JSJ BEAUTY 6B
 AJB FARMSTRONG 28C
FLAD FLADELAND GUN FIGHTER 103G
 FLAD FLADELAND DAME 9D

May 7/21		FLAD 39J
Act BW	Adj WW	Adj YW
73	650	1148

CE	BW	WW	YW	MK	TM	MCE
15	-0.4	70	97	22	57	5



JSJ Elite 22E Sire of FLAD 39J

39J is a bull that is impressive from all angles. 39J patterns just like his sire JSJ Elite 22J and will prove to be a dual purpose bull that will work well on heifers and can still add pounds and quality if used on cows. His maternal Grandsire AJB Farmstrong 28C has sired very popular bulls in past sales and has sired excellent uddered females that are very productive.

FLAD FLADELAND JETTA 57J**57J**

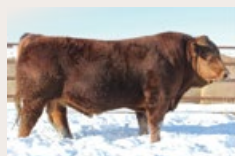
Red / Polled / Purebred

CDGV178124

PHG MR. WIZARD W27
RWG FIRE & ICE 1604
 VG VALLEY MISS 56R
 FLAD FLADELAND PAINKILLER 123C ET
FLAD FLADELAND FIESTA 139F
 FLAD FLADELAND ACORN 8A

May 11/21		FLAD 57J
Act BW	Adj WW	Adj YW
71	537	1033

CE	BW	WW	YW	MK	TM	MCE
10	0.2	50	64	20	45	3



RWG Fire and Ice 1604
Sire of 57J

57J is moderate made, has that nice dark color to him and has adequate hair, which are some of the traits of his sire RWG Fire & Ice. The Fire & Ice daughters we have in production have added volume, they are big bodied and they have good udder quality.

**FLAD FLADELAND JED 59J****59J**

Red / Polled / PC50

CDGV181498

ERIXON DEALER 63Z
AJB FARMSTRONG 28C
 AJB DOUBLE ROCK LADY 6A
 ZTM MCCOY 301P WRANGLER 107W
MGF WRANGLER'S ANGEL 6Y
 MGF BERETTA'S ANGEL 19M

May 12/21		FLAD 59J
Act BW	Adj WW	Adj YW
83	530	1051

CE	BW	WW	YW	MK	TM	MCE
9	1	61	87	25	56	3



AJB Farmstrong 28C Sire
of 59J

The mating of this bull is the proven combination of Simmental x Gelbvieh Genetics that has worked so well for us on the bull and female sides. These hybrid bulls have been very popular and high in quality in the past sales with the added vigor and performance just like 59J has to offer.

**FLAD FLADELAND JACE 63J****63J**

Red / Polled / Purebred

CDGV178128

PHG MR. WIZARD W27
RWG FIRE & ICE 1604
 VG VALLEY MISS 56R
 JRI GUNG HO 282C51
FLAD FLADELAND FOXY LADY 64F
 FLAD FLADELAND LYNX 19Z

May 14/21		FLAD 63J
Act BW	Adj WW	Adj YW
69	554	1077

CE	BW	WW	YW	MK	TM	MCE
10	-0.4	52	78	24	51	3



JRI GungHo Grandsire of
FLAD 63J

Here is another Fire & Ice son with a bit more stretch and frame than his brother. When you combine the top and bottom side of his pedigree this is what makes him to be loose hided, deep bodied, have the extra hair and has very strong maternal traits.



**FLAD FLADELAND JIG 73J****73J**

CDGV178136

Black / Polled / PC94

RWG EXACT COMBINATION 5506

RWG GREEN LIGHT 9411 ET

RWG KITTY'S DREAM 6526

FLAD FLADELAND PAINKILLER 123C ET

FLAD FLADELAND FIRE PROOF 188F

FLAD TRACE 101T

May 16/21		FLAD 73J
Act BW	Adj WW	Adj YW
86		

CE	BW	WW	YW	MK	TM	MCE
6	4.7	66	101	25	58	1



Granddam RWG Kitty's Dream 6526 of 74J

The RWG Green Light G411 sons in the sale continue to keep impressing us. Just like his sire, 73J has that excellent hair coat, he is long and deep and will truly add performance and pounds to his progeny. Around here we put a lot of focus on maternal traits and as you look into this pedigree you will see yet another productive Painkiller daughter on the bottom side but on the top side you will see RWG Kitty's Dream 6526, who is one of the most productive donor cows in the industry.

**FLAD FLADELAND JUNK YARD DOG 75J****75J**

CDGV178139

Red / Homozygous Polled / PC88

DCSF POST ROCK POWER BUILT 37B8

LRSF LRL DEWALT F148

LRSF NELLIE C62

RWG TEXAS WORTH 9223

FLAD FLADELAND BAJA ROSA 154B ET

FLAD BEACH GIRL 60R

May 16/21		FLAD 75J
Act BW	Adj WW	Adj YW
83	625	1085

CE	BW	WW	YW	MK	TM	MCE
12	-0.3	62	82	25	56	7

This DeWalt son has the most performance of his brothers in the sale while still maintaining adequate calving ease. 75J is hairy, stout with good length. He has a smooth shoulder with the added neck extension that flows into a nice skull shape. We feel he will be a great dual purpose bull.

**FLAD FLADELAND JETSON 76J****76J**

CDGV178140

Red / Polled / Purebred

FLAD FLADELAND PAINKILLER 123C ET

FLAD FLADELAND GROVER 102G

FLAD FLADELAND BAYWATCH 41B

FLAD XLT 16X

FLAD FLADELAND AGENDA 13A

FLAD MISS UNIVERSE 163U

May 16/21		FLAD 76J
Act BW	Adj WW	Adj YW
97	608	1240

CE	BW	WW	YW	MK	TM	MCE
9	2.8	68	106	20	54	2

76J is a lighter colored FLAD 102G son who I would say is just the right kind. He is as long as you can make him while still being very deep with natural muscling. He is backed by FLAD 13A who herself has added volume, very good structured and has a nice, neat udder.



FLAD FLADELAND BUC 83J

83J

Red / Polled / Purebred

CDGV177337

RWG RIGHT COMBINATION 5506

FLAD FLADELAND GRONK 23G ET

FLAD FLADELAND SPARKS FLY 29Z

LCR WARNOCK 612W

FLAD FLADELAND BAYWATCH 41B

FLAD STRAWBERRY 28S

May 18/21	FLAD 83J	
Act BW	Adj WW	Adj YW
91	584	1169

CE	BW	WW	YW	MK	TM	MCE
8	2.1	58	79	21	50	2



Maternal brother to
FLAD 83J



Maternal brother to
FLAD 83J

83J is another deep sided, dark colored top end Fladeland Gronk 23G ET son. In our 2022 bull sale, one of the high sellers was a maternal brother Fladeland Highwayman 24H who sold to the Cleveland's. Another interesting note that the sire to several bulls in this years sale is also a maternal brother he is Fladeland Grover 102G who was a high seller to Joe Lansing in the 2021 sale. As you can see the consistency and quality runs very deep in his dam Fladeland Baywatch 41B no matter which way she is bred.

FLAD FLADELAND JUDGE 85J

85J

Black / Polled / BA38

CDGV181497

HAMI HF DECISIVE 56Z

RICHMOND CALL OF DUTY SRD 1C

RICHMOND SPECIAL FATE SRD50A

LCR WARNOCK 612W

FLAD FLADELAND CONFLICT 258C

FLF LAURA 160N

May 20/21	FLAD 85J	
Act BW	Adj WW	Adj YW
81	545	1128

CE	BW	WW	YW	MK	TM	MCE
12	0.1	67	99	23	56	6



Richmond Call of Duty
SRD 1C Sire of 85J

This is our only black balancer bull this year and is also the last of the Call of Duty sons to sell. We really appreciate how both breeds compliment each other by adding a bit more punch to the performance and add extra maternal values. 85J is deep ribbed, big nuted and will sire heavy steers and make popular females to sell or to retain.





FLAD FLADELAND JABS 105J

105J

Red / Homozygous Polled / PC88

CDGV178480

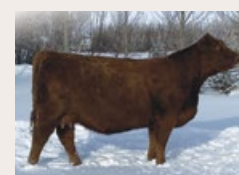
DCSF POST ROCK POWER BUILT 37B8
 LRSF LRL DEWALT F148
 LRSF NELLIE C62
 FRL FLAD FIR RIVER KESSEL 863
FLAD FLADELAND DOODLE 57D
 FLAD FLADELAND ALMOND 119A

May 24/21		FLAD 105J
Act BW	Adj WW	Adj YW
89	604	1240

CE	BW	WW	YW	MK	TM	MCE
10	0.8	65	94	21	54	5



Kessel FRL FLAD Kessel 863A
 Grand sire of FLAD 105J



FLAD 58H Kessel Granddaughter

105J has the herd bull presence about him. He has good structure, he is well balanced and is the heaviest muscled bull in the pen. Just an absolute powerhouse and will definitely get your attention on sale day. As you see him in the pen you will admire his length and depth of body and his impressive style. His dam 57D is an impressive, powerful Kessel daughter.



FLAD FLADELAND JEEP 110J

110J

Red / Homozygous Polled / PC88

CDGV178163

DCSF POST ROCK POWER BUILT 37B8
 LRSF LRL DEWALT F148
 LRSF NELLIE C62
 RWG RIGHT COMBINATION 5506
FLAD FLADELAND FIRECRACKER 93F ET
 FLAD FLADELAND SPARKS FLY 29Z

May 26/21		FLAD 110J
Act BW	Adj WW	Adj YW
73	537	1059

CE	BW	WW	YW	MK	TM	MCE
13	-1.5	57	82	19	48	7



Grand Sire of FLAD 110J

Here is our sharpest fronted bull that profiles very nice and will add some style to any herd. His dam FLAD 93F, is a maternal sister to this years sale Lot FLAD 156J and she is also a full sister to Fladeland Gronk 26G ET.

FLAD FLADELAND LUMBERJACK 115J 115J

Red / Homozygous Polled / Purebred

CDGV178166

FLAD FLADELAND PAINKILLER 123C ET

FLAD FLADELAND GROVER 102G

FLAD FLADELAND BAYWATCH 41B

OSF LITE 'EM UP 2A

FLAD FLAD FLADELAND ELANOR 47E

FLAD FLADELAND COLDASICE 80C

May 27/21		FLAD 115J
Act BW	Adj WW	Adj YW
100	597	1203

CE	BW	WW	YW	MK	TM	MCE
8	3.7	65	100	22	55	3



VV Zake 14Z Great Grand-sire of FLAD 12G



FLAD 41B Granddam of FLAD 12G

Lumberjack is one of the thickest haired bulls in the pen. He is loose made, has lots of bone, lots of mass and is wide topped. 115J resembles his sire Fladeland Grover 102G the most of all the brothers in the sale.



Lot 115J

FLAD FLADELAND JUMP 129J 129J

Red / Polled / PC50

CDGV178176

ERIXON DEALER 63Z

AJB FARMSTRONG 28C

AJB DOUBLE ROCK LADY 6A

WGG JUST GET-N-GO 90J

JSJ BETTER LATE THAN NEVER 42E

JSJ 88Z

June 2/21		FLAD 129J
Act BW	Adj WW	Adj YW
98	480	1104

CE	BW	WW	YW	MK	TM	MCE
10	1.4	65	95	21	54	4

Here is a well rounded commercial bull that is deep, long, and easy fleshing. He will work very well if you are looking to raise those solid heavy market calves.



Lot 129J

FLAD FLADELAND JACK BLACK 139J 139J

Black / Homozygous Polled / Purebred

CDGV178183

RWG EXACT COMBINATION 7409

RWG GREEN LIGHT 9411 ET

RWG KITTY'S DREAM 6526

JRI TOP RECRUIT 254U82

FLAD FLADELAND IMPULSE 60A ET

FLAD BEACH GIRL 60R

June 6/21		FLAD 139J
Act BW	Adj WW	Adj YW
89	589	1205

CE	BW	WW	YW	MK	TM	MCE
9	1.6	73	101	28	65	5



Granddam RWG Kitty's Dream 6526 of 139J

Another powerful Green Light son. 139J is stout, easy fleshing with muscle expression and depth and length of quarter. He patterns very similar to his sire. The elite genetics of Green Light and FLAD 60A are popular - they are proven in quality and combine the right mixture and balance of performance and calving ease.



Lot 139J

**FLAD FLADELAND TORCH 156J****156J**

CDGV178193

Red / Homozygous Polled / Purebred

FLAD FLADELAND PAINKILLER 123C ET

FLAD FLADELAND GROVER 102G

FLAD FLADELAND BAYWATCH 41B

JDPD ASTRO 407S

FLAD FLADELAND SPARKS FLY 29Z

FLAD SHILOH 83S

June 27/21		FLAD 156J
Act BW	Adj WW	Adj YW
87	540	1161

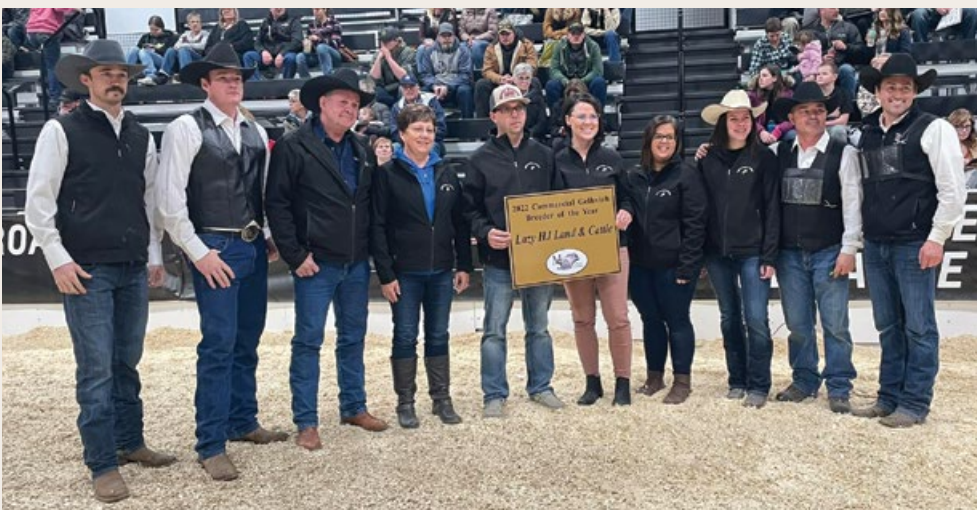
CE	BW	WW	YW	MK	TM	MCE
9	2.2	59	89	22	52	3

Torch is out of one of our best and most popular cows ever 'Sparks Fly'. He is a maternal brother to the back to back 2021 National Grand Champion bull, Fladeland Gronk 23G ET and 2022 National Grand Champion bull, Fladeland Hawkeye 2H who are our anchor herd bulls. Like his brothers, Torch is long bodied, has muscle expression, good structure and that awesome style.

**FLADELAND HAWKEYE 2H***Grand Champion Bull 2022 CANADIAN WESTERN AGRIBITION***FLADELAND GRONK 23G ET***Grand Champion Bull 2021 CANADIAN WESTERN AGRIBITION***FLADELAND HAWKEYE 2H**

Thank You To everyone for your **INTEREST AND SUPPORT IN 2022**

Allan & Robert Devreese
Alan Hoffinger
Big Muddy Cattle Co.
Blaine McCutcheon
Blayne & Allison Klein
Bruce & Danette Montgomery
Dwaine Thiessen
Frank Ramage
Gary & Sharon Barrett
Golden Buckle Gelbvieh
Laurel Cleveland
Lazy D Ranch
Lazy HJ Land & Cattle Co. (2)
Marcus Bauer (4)
Myron Machacek
Noreen Fenske
Paul Hlavka
Ritter Ranch
RPS Gelbvieh
4 Winds Ranch



Congratulations to

LAZY HJ LAND & CATTLE
HARVEY & SHARON HLAVKA AND FAMILY

2022 Man/Sask Gelbvieh Commercial
Breeder of the Year.

*Harvey and Sharon are repeat customers
of our sale.*

TWIN VIEW LIVESTOCK
Box 97
Parkbeg, Saskatchewan
S0H 3K0

*If you wish to stop receiving this catalogue please call or text
Joe at (403) 465-2805 to be removed from the mailing list.*

FLADELAND LIVESTOCK *and* TWIN VIEW LIVESTOCK **BULL SALE**