

PREMIUM GENETICS

Bull Sale

March 16, 2024 | 1:00 PM

Johnstone Auction Mart, Moose Jaw, SK



Hereford | Simmental | Red Angus

PREMIUM GENETICS *Bull Sale*

MARCH 16, 2024 | 1:00 PM
JOHNSTONE AUCTION MART
MOOSE JAW, SK

Sale Information

AUCTIONEER

Scott Johnstone 306-693-4715

RINGMEN

Darwin Rosso 306-690-8916

Corey Mantell 306-693-4715

SALE DAY PHONES

Rob O'Connor 306-550-4890

Carmen Millham 306-867-4231

Sandra Jeffery 306-631-1928

Roger Meyers 306-221-1558

INSURANCE

Stockmens Insurance 306-931-0088

Loewen Agencies 306-869-7999

ONLINE BIDDING



Internet Bidding Available
DLMS
www.dlms.ca
Direct Livestock Marketing Systems
For more information call:
Mark Shologan 780-699-5082 or Purebred Team 780-991-3025

Sale Day Welcome....

Welcome to the Premium Genetics Bull Sale. This is a multi-breed offering from some of the most dedicated seed stock producers in the region. This group of contributors continues to improve their offering each year and you will find strong bulls that you can confidently add to your herd.

The drought experienced these last number of years have provided several challenges to the cattle industry. Fortunately, 2023 was a year of record cattle prices across the country. Steers averaging over \$2.25/lbs and record bred cattle prices provide some optimism around the cattle industry.

We have assembled a group of bulls that have been raised by hardy females. A group of females that are sound, efficient, and productive. These bulls, we believe you will find, are sound with good foot quality, lots of middle and muscle shape, and will add pounds to their calves.

Feel free to contact any of the consignors prior to the sale to view or inquire about the bulls. Stop by Johnstone's to see the bulls on the 15th and enjoy some fellowship. If for any reason you are unable to attend the sale, please feel free to contact the sale staff or any of the contributors. Videos of the bulls are on DLMS, and DLMS has will be onsite if internet bidding is preferred.

Sale day lunch will be provided.

Thank you for your interest in our offering and please let us know how we can be of assistance in being your trusted source of genetics for your herd.

*- The consignors of the
Premium Genetics Bull Sale*

Consignors

LONE PINE CATTLE SERVICES

Rob & Dawn O'Connor
Box 158, Vibank, SK S0G 4Y0
Cell: 306-550-4890
rdoconnor@sasktel.net

HMS HI-CLIFFE

The Millham Family
Box 382, Outlook, SK S0L 2N0
Carmen: 306-867-4231
carm.dvm@sasktel.net
www.hmshicliffe.com

COULEE CROSSING CATTLE COMPANY

Sandra Jeffery
Box 705 Stn Main
Moose Jaw, SK S6H 4P4
Phone: 306-693-2215
Cell: 306-631-1928
couleecrossingcc@gmail.com

BROKEN TRIANGLE RANCH

Roger Meyers
Box 153, Minton, SK S0C 1T0
306-221-1558
rogermbtr@gmail.com

Lone Pine Cattle Services

Lone Pine Cattle Services is located near Vibank, SK and is owned and operated by Rob, Dawn, Lexie and Jessica O'Connor.

We breed about 100 purebred females annually. Our genetic program focuses on maternal genetics with performance and eye appeal. We achieve this through the use of strong herd bulls, sourcing world leading sires through artificial insemination and new cow families through the use of embryo transfers.

Our calves are vaccinated at birth with Bovilis Nadalgen 3-PMH, in late spring with Vision 8 Somnus with SPUR. They are vaccinated with Pyramid FP5 in early autumn.

- Rob, Dawn, Lexie and Jessica O'Connor



1 XLP JRP *Red Rock* 1K

MALE | XLP 1K | C03095819 | 03/01/2022

KCF BENNETT STRATEGY Z303 ET
TH MASTERPLAN 183F
TH 512X 145Y DOMINETTE 57B

SCHU-LAR ON TARGET 22S
KCF MISS REVOLUTION X338 ET
FTF PROSPECTOR 145Y
TH 122 71I DOMINETTE 512X ET

ANL A XLP ACTION ET 75Z
XLP 75Z MANDY 117H
GHC LRL MISS SYBIL 117D

TH 89T 743 UNTAPPED 425X ET
ANL PBG 3N SPLENDOR 143T
GHC MACH 1 25A
HAROLDSON'S PHILIS T100 51W

Here's an exciting looking bull. Dark red and short marked. Sired by one of the breeds most popular bulls. His dam is perhaps the strongest ACTION daughter we've ever raised. A very important cow for the future of our herd.

Halterbroke.

Consigned with JRP Herefords.

| BW | EPDs | CE | BW | WW | YW | Milk | TM | MCE |
|----|------|------|-----|------|-------|------|------|-----|
| 85 | | -4.0 | 5.5 | 71.6 | 122.8 | 24.7 | 60.5 | 0.0 |

2

XLP SF *Big Ticket* 131K

MALE | XLP 131K | C03095800 | 23/03/2022

XLP BLAST OF ACTION 243E
XLP STAND FOR ACTION 228H
OSF SARAH 521X 228A

ANL A XLP ACTION ET 75Z
XLP 101S MORAY 243W
TH 122 71I VICTOR 521X ET
HAROLDSONS SARAH T100 59Y

RVP STAR 533P CAN-AM ET 57U
XLP SF VICTORIA 131E
XLP 1131W VICTORIA 131A

STAR BRIGHT FUTURE 533P ET
STAR BONNIE BETH 54N
MHPH 2N WEBSTER 1131W
XLP 61P VICTORIA 131U

| BW | EPDs | CE | BW | WW | YW | Milk | TM | MCE |
|----|------|------|-----|------|------|------|-----|------|
| 90 | | -6.5 | 4.6 | 56.6 | 91.5 | 18.8 | 471 | -3.6 |

A very attractive bull. His sire is a big, deep bodied, perfectly footed individual from a great line of bulls that we have used for nearly a decade.

Halterbroke



131K

3

KIRBY-LONEPINE *Desperado* 400K

MALE | LPK 400K | C03095788 | 06/04/2022

NJW 73S W18 HOMEGROWN 8Y ET
RVP 8Y GLOBE TROTTER ET 137G
NJW 73S R117 DREAMIN 149X

SHF WONDER M326 W18 ET
NJW P606 72N DAYDREAM 73S
SHF RIB EYE M326 R117
NJW P606 72N DAYDREAM 73S

TH 71U 719T MR HEREFORD 11X
KIRBY-LONEPINE SYBIL 403A
KIRBY-LONEPINE 5L SYBIL 403T

TH 122 71I VICTOR 719T
TH 7N 45P RITA 71U
STAR OBF BOGART 5L
KIRBY-LONEPINE 76J SYBIL 403L

| BW | EPDs | CE | BW | WW | YW | Milk | TM | MCE |
|----|------|------|-----|------|------|------|------|------|
| 86 | | -6.5 | 2.9 | 50.7 | 81.3 | 33.2 | 58.6 | -2.6 |

This is a masculine bull. His dam was Agribition Jackpot breed champion. His sire has been used heavily in our herd to add depth, muscle shape and maternal values.

Consigned with Kirby Polled Herefords.



400K

CAN'T MAKE THE SALE?

Watch, Bid & Buy Online

Instructions for Viewing And Bidding At the Sale

Visit www.dlms.ca, Fill out the registration form located under registration and sign-up for your free user account to select a username and password.

BIDDERS - To be approved as a bidder, Log in and click BUYER APPROVAL tab, select the sale you are interested in bidding at and click sign up.

For more information or help with buyer approved call:

Mark Shologan 780-699-5082 or Purebred Team 780-991-3025

DLMS
www.dlms.ca
Direct Livestock Marketing Systems



CANADA'S ONLINE SEEDSTOCK SOURCE.



HMS Hi-Cliffe

HMS Hi-Cliffe, owned by the Millham Family, is a small family ranch of 30 purebred Polled Herefords. We are passionate about raising quality cattle for the commercial and purebred industries and are fortunate enough to have some that are good enough for the show circuit.

The processing protocol: IBR, BVD, BRSV, Mannheimia, Haemophilus, and Blackleg vaccines, endectocide and fly control are given in the spring and fall. All bulls will receive their initial vaccination for foot rot prior to sale day. Bull feeding regime: Free choice hay supplemented with Masterfeed Propel and a vitamin/mineral mix.

We have a very powerful and consistent set of bulls on offer this year. We focus on sound, structurally correct bulls with maternal strength. All bulls are docile, and halter trained. Many of the bulls are heifer approved and many are homozygous polled.

- *The Millham Family*



4 HMS HI-CLIFFE 15H *Kodiak* 31K

MALE | HMS 31K | C03095067 | 20/03/2022

HAROLDSON'S TRACTION ET 50E
HMS HI-CLIFFE 50E HUGO BOSS 15H
WCC 161X MARVEL 5844C

R LEADER 6964
HAROLDSON'S MARVEL 45P 5W
SQUARE-D MANDATE 161X
SQUARE-D NADIA 6844S

NJW 73S W18 HOMETOWN 10Y ET
HMS HI-CLIFFE FORTUNE ET 31F
TCF GHC 11X MISS ULTRA 306A

SHF WONDER M326 W18 ET
NJW P606 72N DAYDREAM 73S
TH 71U 719T MR HEREFORD 11X
WUNDERBAR 40U MISS ULTRA 17Y

| BW | Adj YW | EPDs | CE | BW | WW | YW | Milk | TM | MCE |
|----|--------|------|-----|-----|------|------|------|------|------|
| 89 | 1248 | | 2.9 | 2.6 | 47.9 | 71.2 | 24.3 | 48.3 | -3.3 |



HMS 31K at CWA

Homozygous Polled | pigment 50%L:25%R

Kodiak is a March born bull who placed 2nd in class at Canadian Western Agribition in 2022. We used him as our junior herd sire last breeding season. His sire, Hugo Boss 15H, was our heifer bull for a few years. On his maternal side is our foundation Ultra cow family. Fortune 31F has been on the show road for years. She was Reserve Senior Champion Cow at Bonanza 2021.



31F - Res Mature Pair - Dam of 31K



31F - Dam of 31K



10L Grand Champion Bull



10L at CWA



46L - Reserve Yearling Bull



46L at CWA



5 HMS HICLIFFE *Louisville* ET 10L

MALE | HMS 10L | C03105953 | 28/01/2023

H BK CCC SR GAME CHANGER ET
HAROLDSON'S JVJ ROYAL 24E
HAROLDSON'S AD JESSICA 48Y 13B

KJ HVH 33N REDEEM 485T ET
NJW 78P 63N LADYSPORT 51W ET
HAROLDSONS WLC RHINO ET 48Y
HAROLDSON'S WS JESSICA 4T 60X

MLL 10Y ROCKY ET 225D
HMS HI-CLIFFE 225D GLAMOUR 32G
HMS HI-CLIFFE 305A DIAMOND 64D

NJW 73S W18 HOMETOWN 10Y ET
MJT MISS POLLY 125S
TCF JVJ TIX THE GOODS 305A
HI-CLIFFE XCEL 64X

| BW | WW | Jan WT | EPDs | CE | BW | WW | YW | Milk | TM | MCE |
|----|-----|--------|------|-----|------|-------|------|------|------|-----|
| 86 | 840 | 1350 | -2.3 | 5.9 | 66.0 | 114.2 | 31.4 | 64.4 | -1.0 | |

Smooth Polled | pigment 100%L:100%R

Louisville 10L is one of our show bulls from the fall. His dam, Glamour 32G, speaks for herself. Louisville 10L was Reserve Grand Bull at Lloyd's Stockade Roundup, Reserve Hereford Bull at Agribition's President Classic bull jackpot, and Grand Champion Bull in January's Lloyd's Exhibition Cattleman's Call bull congress.

We are selling ¾ interest and full possession, show rights negotiable through 2025.

6 HMS HCF24E *Long Branch* ET 46L

MALE | HMS 46L | C03105957 | 03/02/2023

H BK CCC SR GAME CHANGER ET
HAROLDSON'S JVJ ROYAL 24E
HAROLDSON'S AD JESSICA 48Y 13B

KJ HVH 33N REDEEM 485T ET
NJW 78P 63N LADYSPORT 51W ET
HAROLDSONS WLC RHINO ET 48Y
HAROLDSON'S WS JESSICA 4T 60X

MLL 10Y ROCKY ET 225D
HMS HI-CLIFFE 225D GLAMOUR 32G
HMS HI-CLIFFE 305A DIAMOND 64D

NJW 73S W18 HOMETOWN 10Y ET
MJT MISS POLLY 125S
TCF JVJ TIX THE GOODS 305A
HI-CLIFFE XCEL 64X

| BW | WW | Jan WT | EPDs | CE | BW | WW | YW | Milk | TM | MCE |
|----|-----|--------|------|-----|------|-------|------|------|------|-----|
| 94 | 888 | 1335 | -1.7 | 5.9 | 63.3 | 103.7 | 31.2 | 62.9 | -0.9 | |

Smooth Polled | pigment 33%L:90%R

Long Branch 46L is the other show bull from the fall. His mass and structure attracted many admirers. Long Branch was Hereford Champion in Lloyd's Stockade King of the Ring jackpot, Hereford Champion in Farm Fair's Legend of the Fall jackpot, and a class winner at Canadian Western Agribition. In January, Long Branch was Reserve Yearling Bull, behind his flush brother, at Lloyd's Cattleman's Call.

We are selling ¾ interest and full possession, show rights negotiable through 2025.

7 HMS HI-CLIFFE *Lancaster* ET 6L

MALE | HMS 6L | C03105952 | 01/02/2023

H BK CCC SR GAME CHANGER ET
HAROLDSON'S JVJ ROYAL 24E
HAROLDSON'S AD JESSICA 48Y 13B

KJ HVH 33N REDEEM 485T ET
NJW 78P 63N LADYSPORT 51W ET
HAROLDSONS WLC RHINO ET 48Y
HAROLDSON'S WS JESSICA 4T 60X

MLL 10Y ROCKY ET 225D
HMS HI-CLIFFE 225D GLAMOUR 32G
HMS HI-CLIFFE 305A DIAMOND 64D

NJW 73S W18 HOMETOWN 10Y ET
MJT MISS POLLY 125S
TCF JVJ TIX THE GOODS 305A
HI-CLIFFE XCEL 64X

| BW | WW | Jan WT | EPDs | CE | BW | WW | YW | Milk | TM | MCE |
|----|-----|--------|------|-----|------|------|------|------|-----|-----|
| 85 | 778 | 1305 | -0.6 | 4.4 | 56.2 | 90.0 | 28.1 | 56.2 | 0.6 | |

Smooth Polled | pigment 100%L:100%R

Lancaster 6L is a flush brother to Louisville and Long Branch. He was a member of the Champion Pen of 3 Bulls at Lloyd's Exhibition Cattleman's Call. His markings, muscle shape, and length has made him a favorite to all who visits the ranch.

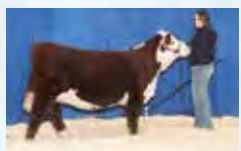
Glamour has 9 offspring, all have been outstanding individuals - successful in the show ring and developing into productive breeding units



Glamour & Kore 23K



Glamour & Jupiter 23J



25L - Flush sister to ET bulls

8

HMS HI-CLIFFE *Lotto Max* 32L

MALE | HMS 32L | C03104424 | 30/01/2023

NJW 73S W18 HOMETOWN 10Y ET
MLL 10Y ROCKY ET 225D
MJT MISS POLLY 125S

SHF WONDER M326 W18 ET
NJW P606 72N DAYDREAM 73S
REMITALL PILGRIM 93P
MJT MISS 7M MERLIN 225P

TCF JVJ 11X THE GOODS 305A
HMS HI-CLIFFE 305A DIAMOND 64D
HI-CLIFFE XCEL 64X

TH 71U 719T MR HEREFORD 11X
JVJ 18L MISS BOOMER 9Y
TA-BAR WLB FORMULA 035J
GURR'S 4F KAL'S GAL 4K

| BW | WW | Jan WT | EPDs | CE | BW | WW | YW | Milk | TM | MCE |
|----|-----|--------|------|-----|-----|------|------|------|------|-----|
| 79 | 756 | 1265 | | 7.0 | 2.3 | 46.2 | 77.9 | 26.5 | 49.6 | 2.9 |

Homozygous Polled, Heifer Approved. | pigment 25%L:25%R

It feels like one won the lottery with Lotto Max 32L. He is a full sibling to Glamour 32G. Glamour and Lotto Max have 10 full sibs, all who have hit the mark, successful in the show ring and as productive units in their respective herds. Lotto Max reminds us of his World Champion sire, Rocky 225D. Lotto Max was a member of the Champion Pen of bulls at Lloyd's Exhibition Cattleman's Call.



32L



Diamond - Dam of 32L



Diamond - Dam of 32L

9

HMS HI-CLIFFE *Lieutenant* 22L

MALE | HMS 22L | C03104406 | 13/01/2023

MHPH 3134 EVOLUTION 117E
MHPH 117E HOBBS ET 203H
MHPH 301W DAINTY 205Y

CHURCHILL STUD 3134A
MHPH 10Y NITA 226B
MHPH 102S WYATT 301W
MHPH MS 101S DAINTY 123U

CHURCHILL ROCK 646D ET
SRF GINA 106G
MHPH 118U AMBER 106Y

NJW 98S R117 RIBEYE 88X ET
SR CCC LADYSPORT 2205 Z ET
MHPH 101S UMPIRE 118U
LCC 204P MERRY ME ON 704 ET

| BW | WW | Jan WT | EPDs | CE | BW | WW | YW | Milk | TM | MCE |
|----|-----|--------|------|-----|-----|------|------|------|------|-----|
| 76 | 756 | 1265 | | 6.4 | 2.0 | 44.4 | 65.3 | 26.2 | 48.4 | 5.6 |

Smooth Polled, Heifer Approved. | pigment 100%L:100%R

This is one bull that continues to surprise us and impress visitors to the ranch. Lieutenant 22L was a member of the Champion Pen of bulls at Lloyd's Exhibition Cattleman's Call. Lieutenant and Lotto Max 32L made a powerful pair of bulls that impressed the judges.



22L



22G - Dam of 22L

10

HMS HI-CLIFFE *Lex Luther* 70L

MALE | HMS 70L | C03104428 | 02/02/2023

SHF CANNON Z210 C95
GHC C5 ATTENTION 155E
GHC C5 MISS DUCHESS 58C

GV CMR X151 MR 847 Z210
SHF MISTY 33T Y35
NJW 100W FOUNDATION 54Z ET
GHC MISS UNIQUE 25Z

TCF JVJ 11X THE GOODS 305A
HMS HI-CLIFFE 305A GYPSY 70G
HMS HI-CLIFFE CLEOPATRA 70C

TH 71U 719T MR HEREFORD 11X
JVJ 18L MISS BOOMER 9Y
H WCC/WB 668 WYARNO 9500 ET
M-R 32X ALL ABOUT ME 70A

| BW | WW | Jan WT | EPDs | CE | BW | WW | YW | Milk | TM | MCE |
|----|-----|--------|------|-----|-----|------|------|------|------|-----|
| 78 | 762 | 1185 | | 7.6 | 2.1 | 50.2 | 79.4 | 26.7 | 51.8 | 3.4 |

Smooth Polled, Heifer Approved. | pigment 100%L:100%R

Lex Luther 70L is an attractive, well marked son of Attention 155E. Calving ease and maternal strength as All About Me 70A was a donor cow and Cleopatra 70C was a successful show heifer and productive, well udder female.



70G - Dam of 70L



70L



710L



710J - Dam of 710L

11 HMS HI-CLIFFE *Lightening* 710L

MALE | HMS 710L | C03104430 | 04/02/2023

R LEADER 6964
BOYD 31Z BLUEPRINT 6153
NJW 91H 100W RITA 31Z ET

KT SMALL TOWN KID 5051
S7R KRYSTAL 710J
SVPH KRYSTAL 104X

HYALITE ON TARGET 936
R MISS REVOLUTION 1009
NJW 73S M326 TRUST 100W ET
REMITALL RITA 91H

NJW 73S W18 HOMETOWN 10Y ET
KT MS 0124 TIMES A WASTIN 2086
SHF RIB EYE M326 R117
SVPH 37H KRYSTAL 334N

| BW | WW | Jan WT | EPDs | CE | BW | WW | YW | Milk | TM | MCE |
|----|-----|--------|------|------|-----|------|-------|------|-----|-----|
| 76 | 668 | 1230 | | 10.3 | 2.3 | 63.3 | 106.3 | 25.4 | 571 | 5.5 |

Smooth Polled, Heifer Approved. | pigment 0%L:100%R

Lightening 710L was just a well-made calf at weaning and has performed well since. He has been picked out by every visitor to the ranch. When tragedy happened to our friends at Section 7 Ranch with the untimely loss of Alain, I promised Karen and Alexis that when they desired to retire from the Hereford breed that we would purchase the remaining Hereford cattle. Krystal 104X, was Alexis' foundation cow, and it was an honour to purchase 710J, the dam of Lightening, and boy are we glad we did.

12 HI-CLIFFE 15H *Louie* 9L

MALE | CMI 9L | C03104855 | 15/03/2023

HAROLDSON'S TRACTION ET 50E
HMS HI-CLIFFE 50E HUGO BOSS 15H
WCC 161X MARVEL 5844C

JDH 4X ULTIMATE 236Z 94B
HI-CLIFFE 94B FANTASY 18F
RSK 10Y MISS NINA 18C

R LEADER 6964
HAROLDSON'S MARVEL 45P 5W
SQUARE-D MANDATE 161X
SQUARE-D NADIA 6844S

VCR 993W ULTIMATE 236Z
JDH AH VIOLETS RECRUIT 4X ET
NJW 73S W18 HOMETOWN 10Y ET
RSK 719T MISS NINA 7A

| BW | WW | Jan WT | EPDs | CE | BW | WW | YW | Milk | TM | MCE |
|----|-----|--------|------|-----|-----|------|------|------|------|-----|
| 82 | 702 | 1140 | | 4.7 | 3.7 | 47.8 | 75.8 | 17.5 | 41.4 | 2.5 |

Homozygous Polled, Heifer Approved. | pigment 100%L:100%R

This is a March born son out of our heifer bull, Hugo Boss 15H. When we weaned, he was in serious consideration as a March show bull for Agribition, but due to labour constraints - he stayed home. We love his muscle definition, shape, and length of bull. Just an attractive younger lad.



9L



11L



11J - Dam of 11L

13 HI-CLIFFE 901 *Led Zeppelin* 11L

MALE | CMI 11L | C03104432 | 21/02/2023

TH 22R 16S LAMBEAU 17Y
CSC 701 BOLDER 901
CSC 502 LADY DEW 701

CHURCHILL ROCK 646D ET
HI-CLIFFE 646D JESSICA 1J
WLB 21T QUEEN 1Y

TH 121L 63N TUNDRA 16S
TH 62N 3L KELSEY 22R
CHURCHILL SENSATION 028X
CSC 10Y LADY DEW 502 ET

NJW 98S R117 RIBEYE 88X ET
SR CCC LADYSPORT 2205 Z ET
WLB QUAKER 10H 21T
HI-CLIFFE 36H NIKKI 153N

| BW | WW | Jan WT | EPDs | CE | BW | WW | YW | Milk | TM | MCE |
|----|-----|--------|------|-----|-----|------|------|------|------|-----|
| 78 | 702 | 1190 | | 2.9 | 1.6 | 53.0 | 86.9 | 30.0 | 56.5 | 2.0 |

Homozygous Polled, Heifer Approved. | pigment 100%L:100%R

This bull will rock you! Led Zeppelin 11L is a son of the popular calving ease sire, Bolder 901. His dam, Jessica 1J, is a powerful "Rock" daughter with a fantastic udder. Visitors to the ranch this summer were impressed with the pair, and many thought they would be on the show circuit in the fall. Led Zeppelin is a well marked, homo polled, easy calving bull with much libido.

14

HI-CLIFFE 901 *Limestone* 4L

MALE | CMI 4L | C03104431 | 05/02/2023

TH 22R 16S LAMBEAU 17Y
CSC 701 BOLDER 901
CSC 502 LADY DEW 701

TH 121L 63N TUNDRA 16S
TH 62N 3L KELSEY 22R
CHURCHILL SENSATION 028X
CSC 10Y LADY DEW 502 ET

HMS HI-CLIFFE 305A COMMANDO 64C
HI-CLIFFE 64C FELICITY 2F
WLB 50S GLORIA ET 1002A

TCF JWJ T1X THE GOODS 305A
HI-CLIFFE XCEL 64X
WLB GLOBAL 72M 50S
HI-CLIFFE 36H NIKKI 153N

| BW | WW | Jan WT | EPDs | CE | BW | WW | YW | Milk | TM | MCE |
|----|-----|--------|------|-----|-----|------|------|------|------|-----|
| 88 | 678 | 1185 | | 3.8 | 2.8 | 46.0 | 78.4 | 23.7 | 46.7 | 0.3 |

Homozygous Polled | pigment 100%L:100%R

Limestone 4L is another son of the popular calving ease sire, Bolder 901. His dam, Felicity 2F, was a show heifer, winning her class at Bonanza 2019. Unfortunately, we lost Felicity, in August, so Limestone was left to fend for himself until weaning time in September, (thus, his lower WW). We have always loved his muscle definition and depth.



4L



2F- Dam of 4L

15

HMS HI-CLIFFE *Law Maker* 50L

MALE | HMS 50L | C03104849 | 20/02/2023

KCF BENNETT IMPACT B451
MCCOY B451 TOTEM 91G
MCCOY 5Z SUSIE 20C

KCF BENNETT REVOLUTION X51
KCF MISS M326 T56
MCCOY 743 FACEOFF 5Z
MCCOY 70Y SUSIE 214A

ELM-LODGE DEEP WATER 10D
JHF 10D BELLE 18H
JHF BELLE 20B

NJW 78P TWENTYTWELVE 190Z ET
ELM-LODGE WHOLE SHEBANG 56W
ANL 83T ELI ET 8X
REMITALL BELLE 89T

| BW | WW | Jan WT | EPDs | CE | BW | WW | YW | Milk | TM | MCE |
|----|-----|--------|------|-----|-----|------|------|------|------|------|
| 78 | 710 | 1200 | | 1.0 | 2.4 | 49.1 | 74.5 | 21.3 | 45.9 | -1.3 |

Smooth Polled, Heifer Approved. | pigment 100%L:50%R

Law Maker 50L, was purchased in dam from Raymond Johnson. His dam Belle 18H is a deep bodied, well udder cow who we fell in love with. His sire is a calving ease heifer bull Raymond purchased from McCoy Cattle.



50L



50H - Dam of 50L

16

HMS HI-CLIFFE 112J *Lenix* 13L

MALE | HMS 13L | C03104415 | 20/02/2023

NJW 79Z Z311 ENDURE 173D ET
GLENLEES AXA EVOLVE ET 112J
RVP 106A CAMEO GIRL 45C

KCF BENNETT ENCORE Z311 ET
BW 91H 100W RITA 79Z ET
MHPH 521X ACTION 106A
PCL QUEEN MAKER 118U 61Z

SQUARE-D 42S PROGRESS 323Y
WCC 323Y BEAUTY 4927B
SQUARE-D LASSIE 9207W

REMITALL SUPER DUTY 42S
SQUARE-D NADIA 323P
SQUARE-D REPORT 593R
BNC 5L PENNY LANE 207N

| BW | WW | Jan WT | EPDs | CE | BW | WW | YW | Milk | TM | MCE |
|----|-----|--------|------|------|-----|------|------|------|------|-----|
| 84 | 646 | 1140 | | -3.6 | 5.9 | 56.1 | 96.2 | 23.7 | 51.8 | 1.9 |

Homozygous Polled | pigment 33%L: 0%R

Lenix 13L sire is the CWA Supreme Champion bull, Evolve 112J. His dam was dad's pick from the Wascana dispersal sale and one of Harvey's favorite cows. Lenix is an extremely well, structurally correct individual.



Glenlees AXA Evolve 112J - Supreme CWA Bull
Sire of 13L



13B - Dam of 13L



13L

Coulee Crossing Cattle Company



Welcome to the Premium Genetics bull sale. The last few years of drought and extreme weather have been challenging to say the least. The females that have lasted through these years will produce some of the best genetics to utilize to replicate those females. The bulls are on free choice grass hay with a limit fed textured bull ration supplied by Trouw Nutrition.

Videos of the bulls are available on my Coulee Crossing Cattle Company Facebook page as well as DLMS. The bulls and their dams are available at the farm for viewing at any time. I welcome your visit. See you at the sale.

Yearling weights taken on November 29, 2023.

- Sandra Jeffery



17 CCCC Place Your Bets 118K

MALE | SLJ 118K | PTG1431655 | 29/12/2022

BGS/BM CAPTAIN SCREAM 63D
SVS BETTS 808F
WFL RED SAGE 506C

MAF R HORIZON 7Y
MAF MS 46B
IPU MS. TUBEROSE 117Y

SVS CAPTAIN MORGAN 11Z
RF SCREAM 215Z
R PLUS RELOAD 2006Z
WFL RED SAGE 1003Y
LFE BS LEWIS 322U
LFE KJLI DREAMLADY 79W
S-PAW TURBO CHARGED
IPU POCAHONTAS 243W

| BW | WW | YW |
|-----|-----|------|
| 103 | 687 | 1106 |

| EPDs | CE | BW | WW | YW | Milk | MCE | MWWT |
|------|-----|-----|------|-------|------|-----|------|
| | 9.6 | 2.5 | 80.8 | 110.8 | 22.7 | 7.9 | 63.1 |

Homo Polled.

118K and 120K are a pair of flush brothers by the Betts bull, bought as embryos out of the Meadow Acres dispersal. They are hairy, sound made, performance oriented bulls. 118K is big hipped, wide topped, deep bodied, moderate framed with expressive spring of rib. 118K reminds me a lot of his sire as a calf. 120K is long bodied, big hipped, wide topped, deep bodied with a little more frame and performance. Both bulls are quiet and easy to work with. 118K and 120K are both yearling bulls born just a couple of days shy of 2023 and both homo polled.



Flush Brothers!
Lot 17 & 18

120K

18 **CCCC** *Betts On Me* **120K**

MALE | SLJ 120K | PTG1431657 | 31/12/2022

| BW | WW | YW | EPDs | CE | BW | WW | YW | Milk | MCE | MWWT |
|-----|-----|------|------|-----|------|-------|------|------|-----|------|
| 111 | 802 | 1100 | 9.8 | 2.9 | 88.7 | 120.0 | 22.7 | 8.1 | 671 | |

Homo Polled.



1L



3L

19 **CCCC RED** *Male Model* **1L**

MALE | SLJ 1L | PG1431661 | 01/01/2023

MR NLC UPGRADE U8676
CCCC BLK BASES LOADED 36E
KOP MS ULTIMATE 10X

CITY VIEW FLAME 80F
CCCC RED COVER MODEL 67H
IPU MS COBRESS 97C

ELLINGSON LEGACY M229
MS NLC MOJO S6119 B
IPU ULTIMATE 3U
KOP MS NORTHERN 18U
BERTS DAKOTA 7D
CITY VIEW 24N MOSIE 3Z
NCB COBRA 47Y
CLAYHILL FANCY LUCA 39A

| BW | WW | YW | EPDs | CE | BW | WW | YW | Milk | MCE | MWWT |
|----|-----|------|------|-----|------|-------|------|------|------|------|
| 88 | 692 | 1155 | 9.0 | 6.5 | 97.9 | 144.0 | 27.5 | 6.1 | 76.5 | |

Homo polled.

1L is a good footed, soggy, long as a freight train, meat machine. He will be a female producer with 10X and 97C in his pedigree. 10X calved her eleventh calf this winter for me after being bought as a bred 3 year old out of the Kopp dispersal. 97C has calved in the first 3 weeks of the season every year, but has only produced 2 heifers, both of which have been kept in herd. His dam, 67H has a nice tidy udder, easy keeping, easy to handle, lots of hair and great feet.

20 **CCCC RED** *Shortstop* **3L**

MALE | SLJ 3L | PG1431663 | 02/01/2023

MR NLC UPGRADE U8676
CCCC BLK BASES LOADED 36E
KOP MS ULTIMATE 10X

CLAYHILL RED NOAH 94D
CCCC RED PERSIMMON 108G
CCCC BANANA 33B

ELLINGSON LEGACY M229
MS NLC MOJO S6119 B
IPU ULTIMATE 3U
KOP MS NORTHERN 18U
ERIXON CROSSFIRE 43B
CLAYHILL BABY GIRL 141T
ELLINGSON IDEAL X13
CLAYHILL RED WALTZ 32U

| BW | WW | YW | EPDs | CE | BW | WW | YW | Milk | MCE | MWWT |
|----|-----|------|------|-----|------|-------|------|------|-----|------|
| 92 | 679 | 1084 | 8.7 | 3.9 | 82.2 | 122.2 | 26.5 | 7.7 | 676 | |

Homo polled.

3L is a paternal brother to 1L and are patterned very similar to each other. Good footed, big hipped, big ribbed, quiet temperament and moderate framed. His dam is a moderate framed, good uddered, big ribbed female. She has put a bull through this sale and a replacement female in herd. He will make excellent replacement females.



4L

21 CCCC *Black Benny* 4L

MALE | SLJ 4L | BPTG1431658 | 03/01/2023

WHEATLAND BENTLEY 630D
 IPU BENTLEY 81F
 CLAYHILL FANCY LUCA 39A

WHEATLAND FINAL AFFAIR
 WHEATLAND LADY 72X
 MR NLC UPGRADE U8676
 CLAYHILL FANCY PANTS 32S

SVS SCOUT 665D
 CIRCLE G RED MAGIC 840F
 CIRCLE G RED MAGIC 433B

SVS SCOUT 25X
 SVS RED SATIN 21Z
 WXR REDPATHS KOSMO 38Z
 D BAR C BLACK MAGIC 161X

| BW | WW | YW | EPDs | CE | BW | WW | YW | Milk | MCE | MWWT |
|----|-----|------|------|------|-----|------|-------|------|-----|------|
| 69 | 701 | 1094 | | 10.4 | 0.6 | 79.7 | 108.3 | 19.7 | 4.1 | 59.6 |

Homo Polled.

4L was an embryo purchased in the hopes of getting a heifer calf with Bentley genetics. Benny is quiet, long bodied, easy doing and good footed. He will work great to improve performance, temperament and maternal qualities.



5L

22 CCCC RED *Iron* 5L

MALE | SLJ 5L | PRS1431535 | 05/01/2023

35R
 RFS RED IRON T20
 RF RAUL

HOOKS SHEAR FORCE 38K
 HOOKS KITTY 150J
 RF RED MACK K14
 RFS MISS M201

CCCC BLK BASES LOADED 36E
 CCCC RED SAPPHIRE 57J
 CCCC RED SAPPHIRE 21F

MR NLC UPGRADE U8676
 KOP MS ULTIMATE 10X
 ERIXON CROSSFIRE 43B
 SIMMENTAL/SIMMENTAL

| BW | WW | YW | EPDs | CE | BW | WW | YW | Milk | MCE | MWWT |
|----|-----|-----|------|------|-----|------|-------|------|-----|------|
| 81 | 647 | 953 | | 12.9 | 1.5 | 80.4 | 112.4 | 23.1 | 9.3 | 63.3 |

Homo Polled.

5L is long bodied, deep dark red, quiet temperament, hairy and heifer safe. His dam is a paternal sister to 1L and 3L with a good udder, depth and volume. He will calve easy but will still produce calves with decent performance.



6L

23 CCCC RED *Golden Pharaoh* 6L

MALE | SLJ 6L | PG1431521 | 07/01/2023

SANMAR POLLED PHARAO 12P
 CCCC RED ROYAL PHARAO 1J
 CCCC RED ROYALE 11G

ABR SIR ARNOLDS IMAGE
 SANMAR POL TEARDROP 12M
 NUG ROYAL RED 324A
 CLAYHILL PENNY 20W

WLB BULL 42Z 476F
 CCCC RED GOLDEN DUNCAN 93J
 CCCC RED GOLDY 73G

ERIXON GAME ON 42Z
 WLB 47Y FAE 433D
 CCCC SCOTTY 2D
 CCCC RED GOLDY 34D

| BW | WW | YW | EPDs | CE | BW | WW | YW | Milk | MCE | MWWT |
|----|-----|------|------|------|-----|------|-------|------|------|------|
| 80 | 689 | 1071 | | 14.0 | 0.6 | 73.7 | 103.2 | 26.2 | 11.1 | 63.1 |

Homo Polled. | Heifer Safe.

6L is by a home raised bull that sold through this sale and I sampled a bit. A blaze face, dark red, smooth made bull. Adequate thickness, good depth of body, nice frame with decent performance. He has a lot of good females on both sides of his pedigree which says he will produce some of the best momma cows you will find. He is heifer safe and homo polled. *I would like to retain walking rights for April 2024 only.*

24**CCCC RED *Rusher* 50L**

MALE | SLJ 50L | PG1432334 | 21/01/2023

LFE BLOCKBUSTER 3011C
WLB BULL 3011C 540H
WLB 42Z GAILYN 411ELFEBISS BLACKADVANCE 426U
LFE RS SHELBY 2120X
ERIXON GAME ON 42Z
WLB 468P HALEY 368UNUG ROYAL RED 324A
CLAYHILL RED FREERUSH 1E
CLAYHILL RED FREERUSH 11YLFE BLACK LAKOTA 385W
TRIPLE C SMARTY PANTS R
THSF FREEDOM 300N
CLAYHILL RIOT GEAR 52K

| BW | WW | YW | EPDs | CE | BW | WW | YW | Milk | MCE | MWWT |
|----|-----|------|------|-----|-----|------|-------|------|-----|------|
| 99 | 654 | 1072 | | 8.8 | 2.4 | 70.5 | 102.8 | 23.0 | 5.6 | 58.3 |

Hetro Polled.

50L is a moderate framed heavy muscled maternal oriented bull. He will produce heavy steers and quality replacement females. He comes from a long line of quality producing females.

**25****CCCC RED *Nacho* 57L**

MALE | SLJ 57L | PG1431640 | 23/01/2023

ERIXON CROSSFIRE 43B
CCCC RED CHIP 98F
CCCC RED GOLDY 34DIPU DIABLO 41Y
ERIXON LADY 2P
THSF FREEDOM 300N
SUNNY VALLEY ALICIA 35ACITY VIEW FLAME 80F
CCCC RED FLAMING VENTURE 104J
CCCC RED VENTURA 23DBERTS DAKOTA 7D
CITY VIEW 24N MOSIE 3Z
LCHMN BODYBUILDER 7303F
CLAYHILL PENNY 20W

| BW | WW | YW | EPDs | CE | BW | WW | YW | Milk | MCE | MWWT |
|----|-----|-----|------|------|------|------|------|------|------|------|
| 81 | 583 | 933 | | 17.4 | -0.7 | 62.4 | 88.2 | 24.3 | 13.2 | 55.5 |

Homo Polled.

57L is a heifer bull extraordinaire, low birthweight, top 1% for calving ease, top 3% for birthweight and top 1% for maternal calving ease. A red white faced bull, he will throw that white face in the majority of his offspring. He has decent performance with a quiet temperament. Good spring of rib, depth of body, moderate frame and a long lived cow family behind him means he will produce superior maternal females.

**26****CCCC RED *Shelby* 75L**

MALE | SLJ 75L | PG1431646 | 31/01/2023

LFE BLOCKBUSTER 3011C
WLB BULL 3011C 540H
WLB 42Z GAILYN 411ELFEBISS BLACKADVANCE 426U
LFE RS SHELBY 2120X
ERIXON GAME ON 42Z
WLB 468P HALEY 368UBOUNDARY 68M VISTA 235E
CCCC RED JULIE 89H
X-T RED ROCKET GIRL 98EIPU 68M HORIZON 137B
BOUNDARY REGGIE 194B
MRL MISSILE 138C
X-T MISS SEISMIC 105B

| BW | WW | YW | EPDs | CE | BW | WW | YW | Milk | MCE | MWWT |
|----|-----|------|------|-----|-----|------|-------|------|-----|------|
| 93 | 684 | 1012 | | 7.7 | 3.1 | 86.8 | 127.6 | 27.2 | 4.8 | 70.6 |

Hetro Polled.

75L is the youngest bull in the offering but hasn't had any trouble keeping up with the older bulls in the pen. His mother just had another bull calf destined for the sale next year. She produces moderate birthweight calves with excellent growth. He has a balanced set of epd's and will work in whichever direction you choose to use him. He has a calm temperament with good depth of body, length and muscling.



Broken Triangle Ranch

We are on a third generation, century farm at Minton, Sask. & have been raising Registered Red Angus and Full Fleckvieh for over 30 years. and, have been certified on the VBP+ program since 2016.

The goal here is to produce cattle that do the work themselves. We don't tolerate calving issues, foot or udder problems, lack of fertility or bad attitudes. This herd is on pasture for 11 months of the year.

We refuse to sell any animals to a customer that we wouldn't put in our own herd.

These bulls are gentle, on a complete herd health & custom mineral program, are electric fence trained & have been grown gently.

Updated photos will be posted on Kijiji prior to sale day.

- Roger Meyers



27

RED BTR 29K

MALE | BTR 29K | PENDING | 21/04/2022

RED DKF HIGH CLASS 77K
 RED DKF FIRST CLASS 58H
 RED DKF MS GROUNDPOUNDER 143Z

RED SSS HIGH MARK 272D
 RED DKF MOONBEAM 1X
 RED DKF DYNAMO 71X
 RED DKF MISS RIGHT TIME 116X

RED HOWE BOLD EDITION 80T
 RED MLC B.E. ANNA 12Y
 RED MLC ANNA 39T

RED FINE LINE MULBERRY 26P
 RED HOWE MS DUCHESS 144L
 RED GEIS KNIGHT 26'02
 RED VVV MINIVA 260X109D 7F

BW WW YW
 83

EPDs CE BW WW YW MCE Milk

28

RED BTR 32K

MALE | BTR 32K | PENDING | 23/04/2022

RED BTR 96E
RED BTR 6H
RED MCNEELY LC 303W JULIE 39A

RED BTR 53C
RED MLC 243T BLACKLASS 7Z
RED SSS ARSON 303W
RED MLC JULIET 1U

RED SIX MILE TROY 243T
RED BTR 34B
RED MLC 42T WINNIE 55W

RED TOWAW INDEED 104H
RED RSL SUE 400F
RED T-K DIRECT POWER 42T
RED LUCKY "C" SUIJI 65P

BW WW YW
76

EPDs CE BW WW YW MCE Milk



Full Brothers!

Lot 28 & 29

29

RED BTR 35L

MALE | BTR 35L | PENDING | 19/04/2022

BW WW YW
88

EPDs CE BW WW YW MCE Milk



RED BTR 96E - Grand sire of 32K & 35L

30

BTR 25K

MALE | BTR 25K | PENDING | 16/04/2022

MCCOY 70Y SKYFALL 53A
MCCOY 53A RIVAL 131G
MCCOY 719T ROSE 12D

JDH 117R EQUITY 70Y ET
MCCOY 25M ALISON 64W
TH 122 71I VICTOR 719T
MCCOY 5Z ROSE 141B

BTR 178E (FULL FLECKVIEH)

BW WW YW
88

EPDs CE BW WW YW MCE Milk

Polled



131G - Sire of 25K



Half brother to 25K



BTR 178E- Dam of 25K

**Return Undeliverable
Canadian Addresses To:**

**T Bar C Cattle Co. Ltd.
Box 2330
Warman, SK S0K 4S0**



*Thank you to everyone who supported the
Premium Genetics sale!*

Gordon & Wanda Gustafson
Calin Gauley
Dwayne & Carla Flaman
Shawn Griffin
Rod & Chasta Ward
Brett & Schenlety Borys
Jason Lasota
John Craig
Ed & Ona Lambert
Thomas & Robyn MacNeil
Martin & Cheralynn Weichel
Robert & Meagan Turner
Chell & Natasha Doud
Ian Hamilton

Blake Wilson
Koberstein Farms
Claude Wasden
Bill Potts
Joshua Stevens
Tiszauer Farms
Waybe & Janet Zinn
Bruce & James Hipkin
Kyle Peterson
Randy & Janice Stevens
Russell Debnam
Frank Arnal
Kyder Emde
J L Mackie Angus

Keith Fettes
Tee Two Land & Cattle
Clinton Gross
Benneth Nagel
Caragata Ranch Ltd
Heartland Livestock
John Weikum
JRP Livestock
Donald & Barb Patzack
John Craig
Mazanc Holdings
David Hagel
DC Farms

Terms & Conditions

TERMS: The terms of the sale are cash or cheque, payable at par at the sale location. The right of property shall not pass until after settlement has been made; no invoicing on buyers in attendance, unless previous arrangements have been made. Every animal sells to the highest bidder and in cases of disputes, the auctioneer's decision will be final. Current exchange rates will be announced sale day. All monies are in Canadian funds.

BIDDING: Each animal will sell to the highest bidder.. no by-bidding will be permitted. Disputes - Bidding will be reopened between the parties involved in dispute. If no further bidding is made, the buyer will be the person from whom the auctioneer accepted the last bid. The auctioneer's decision on all disputes will be final.

ANNOUNCEMENTS: All announcements made from the auction block will take precedence over the printed matter in the catalogue. Buyers are therefore cautioned to pay close attention to such disclosures.

CERTIFICATE OF REGISTRATION: Each animal will carry papers issued by their breed association unless otherwise stated. A certificate of registry duly transferred will be furnished to the buyer for each animal after payment has been made.

RIGHTS AND OBLIGATIONS: The above terms and conditions of the sale shall constitute a contract between the buyer and seller and be equally binding to both. Resale of animals following purchase in this sale shall constitute a separate transaction and the rights and obligations of the two parties connected thereto are not covered by the terms and conditions of this sale.

PHONE, MAIL, WIRE BIDS: Bidders unable to attend the sale may phone, wire or mail their bids and instructions to the sale managers, auctioneer or special representatives. Bids must be received in sufficient time prior to the sale.

DELIVERY: We will assist in arranging transportation wherever possible. Each animal becomes the risk of the purchaser as soon as sold.

INSURANCE: Will be available sale day. We strongly recommend that insurance is purchased for full value.

ERRORS: All announcements at sale time, written or oral, supercede any written material in the catalogue.

Created By

*Today's
Publishing*